

# From the beach to the bush - parks and reserves of the North Coast Region

## Bellinger River National Park

Linking Dorrigo and New England National Parks, these steep, forested slopes provide a scenic backdrop to the Bellinger Valley. Phone Dorrigo 6657 2309 6H

## Bindarri National Park

From Dairyville drive to Bindarri Picnic Area on the sparkling Urumbilum River. Bangalore Falls walking track is accessible on unsealed roads from Ulong. Phone Coffs Harbour 6652 0900 7G

## Bongil Bongil National Park

Unspoilt beaches, littoral rainforest and wildlife-rich estuaries offer an ideal setting for family activities. Picnic at Bongil Picnic Area, and launch your canoe to explore Bonville and Pine Creeks. Enjoy an easy walk from Tuckers Rocks through littoral rainforest to the rockpools of Bundagen Headland. Holiday cottage available. Phone Coffs Harbour 6652 0900 8H Book Tuckers Rocks cottage on 6655 6616

## Bundjalung NP

The Esk River in the southern half of the park is the largest untouched coastal river system on the north coast. Other features include freshwater lagoons, mangrove mud flats, coastal heathlands and miles of beautiful beaches. Choose between basic camping at Black Rocks or the facilities of Woody Head camping area, where cabin accommodation is also available. Phone Grafton 6641 1500 Woody Head bookings: phone 6646 6134

## Cascade National Park

Beautiful subtropical and warm temperate rainforest here is an important habitat to many upland frogs, including giant barred frog, stuttering frog and pouched frog. Box Ridge track follows part of an old timber tramway in one corner of the park. Phone Dorrigo 6657 2309 6G

## Cathedral Rock National Park

A park for rock-hoppers and explorers, featuring rugged granite tors, sub-alpine heaths, a myriad of wildflowers and towering gums. Walk to the top of Cathedral Rock or Woolpack Rocks. Picnic or camp at Barokee or Native Dog Creek. Phone Dorrigo 6657 2309 3H

## Chaelundi National Park

Great stands of majestic old-growth spotted gum forest and pockets of lush rainforest occur here. Cutting a deep valley through the ranges, Chandlers Creek provides idyllic remote bush camping (booking is essential as a fee and permit is required). Forest trails are suitable for bicycle or walking. Phone Dorrigo 6657 2309 5F

## Coffs Coast Regional Park

Adjoining the Solitary Islands Marine Park, this string of coastal dune systems, rainforests, heathlands, headlands, coastal lakes and parklands offers plenty of opportunity for beach-based recreation. Phone Coffs Harbour 6652 0900 8F/G

## Cunnawarra National Park World Heritage

One of the Great Escarpment parks, linking the snowgum woodland of alpine New England National Park with the wild ranges of Oxley Wild Rivers National Park. Beech Lookout on Styx Forest Way overlooks ancient Antarctic beech forest. Nearby Wattle Flat and Georges Junction provide quiet camping spots for bush lovers who enjoy forest drives through remote ranges. Phone Dorrigo 6657 2309 3I

## Dorrigo National Park World Heritage

Dorrigo Rainforest Centre introduces visitors to the lush and beautiful subtropical rainforest of this World Heritage area. Venture onto Skywalk for a spectacular bird's eye view over the rainforest canopy or walk among the vines, ferns and soaring trunks to sparkling waterfalls. The Visitor Centre is open 9:00am to 4:30pm every day and includes an information desk, National Parks Shop, a display on rainforest and the Canopy Cafe. Phone Dorrigo 6657 2309 7H



Skywalk boardwalk at Dorrigo National Park

## Dunggir National Park

Within its ridges of eucalypt forest and deep ravines of rainforest, Dunggir shelters koalas, yellow-bellied gliders and black cockatoos. Take a scenic forest drive along Kosekai Road to Kosekai Lookout to enjoy magnificent views east to Mt Yarrhapinni and Smoky Cape. Phone Coffs Harbour 6652 0900 5I

## Guy Fawkes River National Park

Tracks along the edge of the Guy Fawkes River gorge provide vantage points to dramatic views over this vast and secluded wilderness and the river winding 700m below. Picnic or camp at Chaelundi Camping Area. At Ebor Falls, at the upstream end of the gorge, two spectacular waterfalls plunge over basalt ledges. Three cliff-top lookout platforms give excellent views. Phone Dorrigo 6657 2309 4F/G

## Iluka Nature Reserve World Heritage

To enjoy this tiny treasure of remnant coastal rainforest take the barrier-free walking track through lilly pilli trees and strangler figs. Birdwatchers will enjoy the wide range of treetop inhabitants. Phone Grafton 6641 1500 9C

## Moonee Beach Nature Reserve

Look At Me Now Headland is an important site in a creation myth belonging to local Aboriginal people. Barrier free walking tracks pass through a rare grass and heath plant community and provide views over the reserve and Moonee Creek estuary as well as a great whale watching vantage. Phone Coffs Harbour 6652 0900 8G

## Mt Hyland Nature Reserve World Heritage

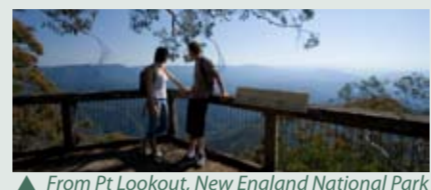
A walking track ascends through unusual cool temperate rainforest to the summit of Mt Hyland, overlooking the western Dorrigo Plateau. Phone Dorrigo 6657 2309 5G

## Muttonbird Is Nature Reserve

This small island is a significant breeding site for wedge-tailed shearwaters, known as muttonbirds. It is also a highly significant site for local Gumbaynggir people, who give cultural tours in school holidays. Enjoy whale watching from the lookouts. Phone Coffs Harbour 6652 0900 8G

## New England National Park World Heritage

At 1564 metres above sea level, Point Lookout offers spectacular panoramic views of the rainforested escarpment edge. Below is a wilderness of deep forested valleys and peaks, against the backdrop of the Pacific Ocean. Picnic, camp or book into one of three delightful cabins. A network of walking tracks wanders through pockets of cool temperate rainforest, snow gum woodland and sub-alpine heaths. Adventurous and well-prepared hikers can explore the trackless wilderness beyond. Phone Dorrigo 6657 2309 5H



From Pt Lookout, New England National Park

## Ngambaa Nature Reserve

Old-growth forest within the reserve provides homes for threatened species such as powerful owls, koalas and giant barred frogs. Tamban Forest Drive leads to Cedar Park picnic area, where a short walking track reveals the delights of this rainforest remnant. Phone Coffs Harbour 6652 0900 6J

## Nymboi Binderay National Park

This park of forested ridges surrounds the plunging granite cliffs of the Nymboiida River gorge, famed for its white water rapids. Commercial whitewater rafting companies offer exciting tours. Moonpar Forest Drive gives access to Platypus Flat picnic and camping area on the river bank, and short walks to heritage sites and old-growth forest. Phone Dorrigo 6657 2309 6F

## Sherwood Nature Reserve

From Woolgoolga, drive to Woolgoolga Creek Picnic Area, set amidst lush subtropical rainforest. A scenic forest drive runs through coastal ridges and over a rugged sandstone range. Phone Coffs Harbour 6652 0900 7F

## Ulidarra National Park

A drive through the park offers scenic views and old-growth coastal eucalypt forest. It is home to diverse native fauna, including koalas, masked owls, wompoo pigeons and little bent-wing bats. Phone Coffs Harbour 6652 0900 8G

## Yuraygir National Park

The longest stretch of undeveloped coastline in NSW, Yuraygir offers striking cliffs, rocky headlands, isolated beaches and quiet lake systems set against a backdrop of forests, heaths and wetlands. Boardwalks, walking tracks, picnic spots and several camping areas are scattered throughout the park. Phone Grafton 6641 1500 9D/E



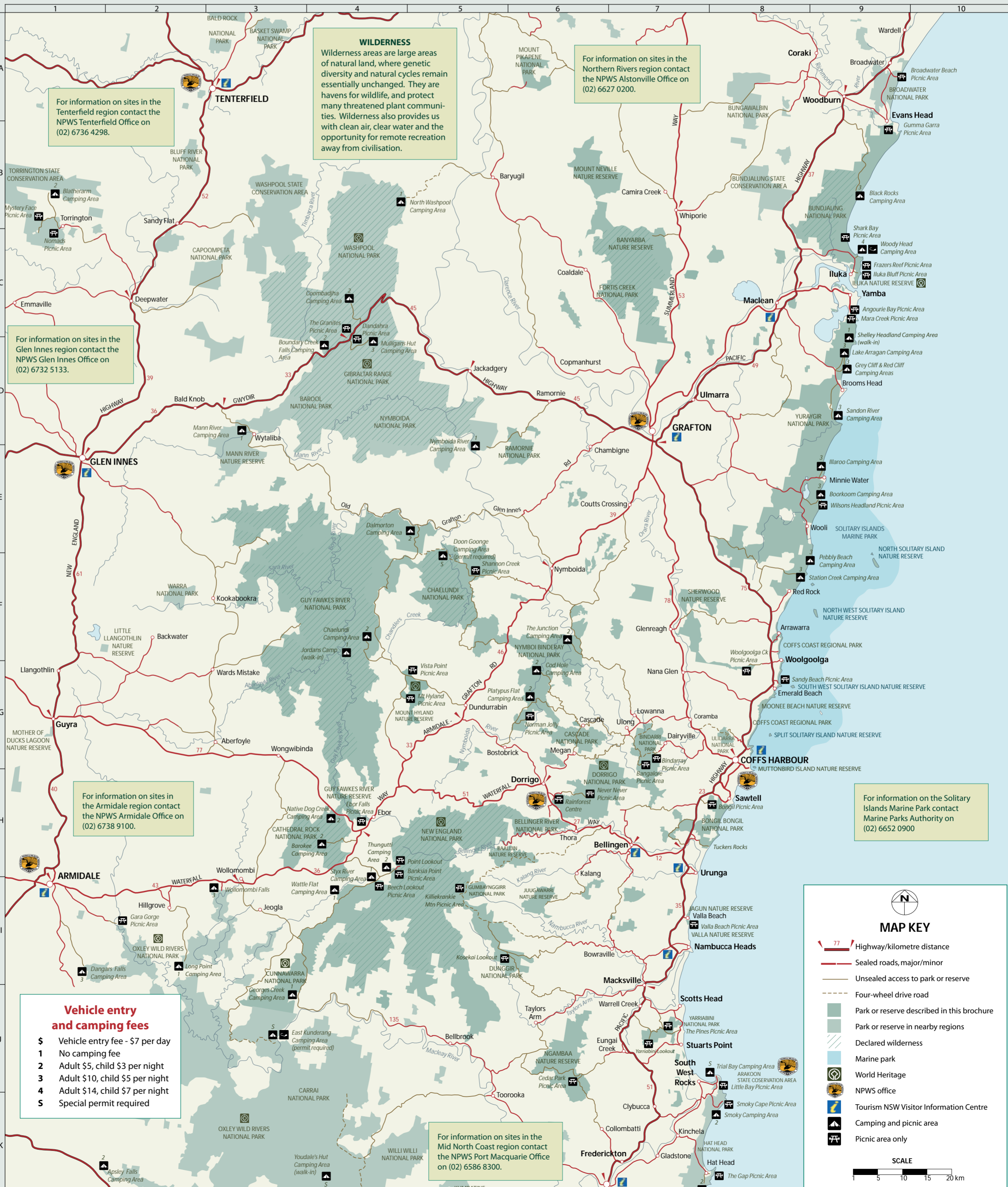
Sandon sunrise, Yuraygir National Park

## Yarriabini National Park

Enjoy stunning views from Yarriabini Lookout and picnic at The Pines, where a unique sculpture highlights the park's significance to the Gumbaynggir and Dughutti people. Phone Coffs Harbour 6652 0900 7J

### Guide to symbols

- Vehicle entry fee
- Wheelchair access
- Picnic area
- Barbecue or fireplace
- Toilets
- Camping area
- Caravan park
- Showers
- Accommodation
- Kiosk
- Boat ramp
- Canoeing/kayaking
- Cycling
- Diving/snorkelling
- Fishing
- Forest drive
- Lookout
- Swimming
- Walking tracks



### Vehicle entry and camping fees

- \$ Vehicle entry fee - \$7 per day
- 1 No camping fee
- 2 Adult \$5, child \$3 per night
- 3 Adult \$10, child \$5 per night
- 4 Adult \$14, child \$7 per night
- 5 Special permit required

For information on sites in the Mid North Coast region contact the NPWS Port Macquarie Office on (02) 6586 8300.

For information on the Solitary Islands Marine Park contact Marine Parks Authority on (02) 6652 0900

For information on sites in the Tenterfield region contact the NPWS Tenterfield Office on (02) 6736 4298.

For information on sites in the Glen Innes region contact the NPWS Glen Innes Office on (02) 6732 5133.

For information on sites in the Northern Rivers region contact the NPWS Alstonville Office on (02) 6627 0200.

**WILDERNESS**  
Wilderness areas are large areas of natural land, where genetic diversity and natural cycles remain essentially unchanged. They are havens for wildlife, and protect many threatened plant communities. Wilderness also provides us with clean air, clear water and the opportunity for remote recreation away from civilisation.

### MAP KEY

- Highway/kilometre distance
- Sealed roads, major/minor
- Unsealed roads to park or reserve
- Four-wheel drive road
- Park or reserve described in this brochure
- Park or reserve in nearby regions
- Declared wilderness
- Marine park
- World Heritage
- NPWS office
- Tourism NSW Visitor Information Centre
- Camping and picnic area
- Picnic area only

SCALE  
1 5 10 15 20 km