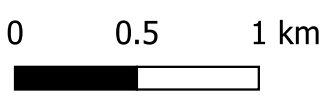


JBPacific (JBP)
jbpacific.com.au
+61 (0)420 644 348
477 Boundary Street
Spring Hill
QLD 4004



Date
13/09/2022

Legend

- Road Centrelines
- Present Day Inundation Extents**
- HHWSS
- 10% AEP Storm Tide Level
- 2% AEP Storm Tide Level
- 1% AEP Storm Tide Level

HHWSS - High High Water Solstices Springs
AEP - Annual Exceedance Probability
SSP - Shared Socioeconomic Pathway

PROJECT ID	2021s1471
AUTHOR	CS
LAST MODIFIED	13/09/2022
VERSION	1

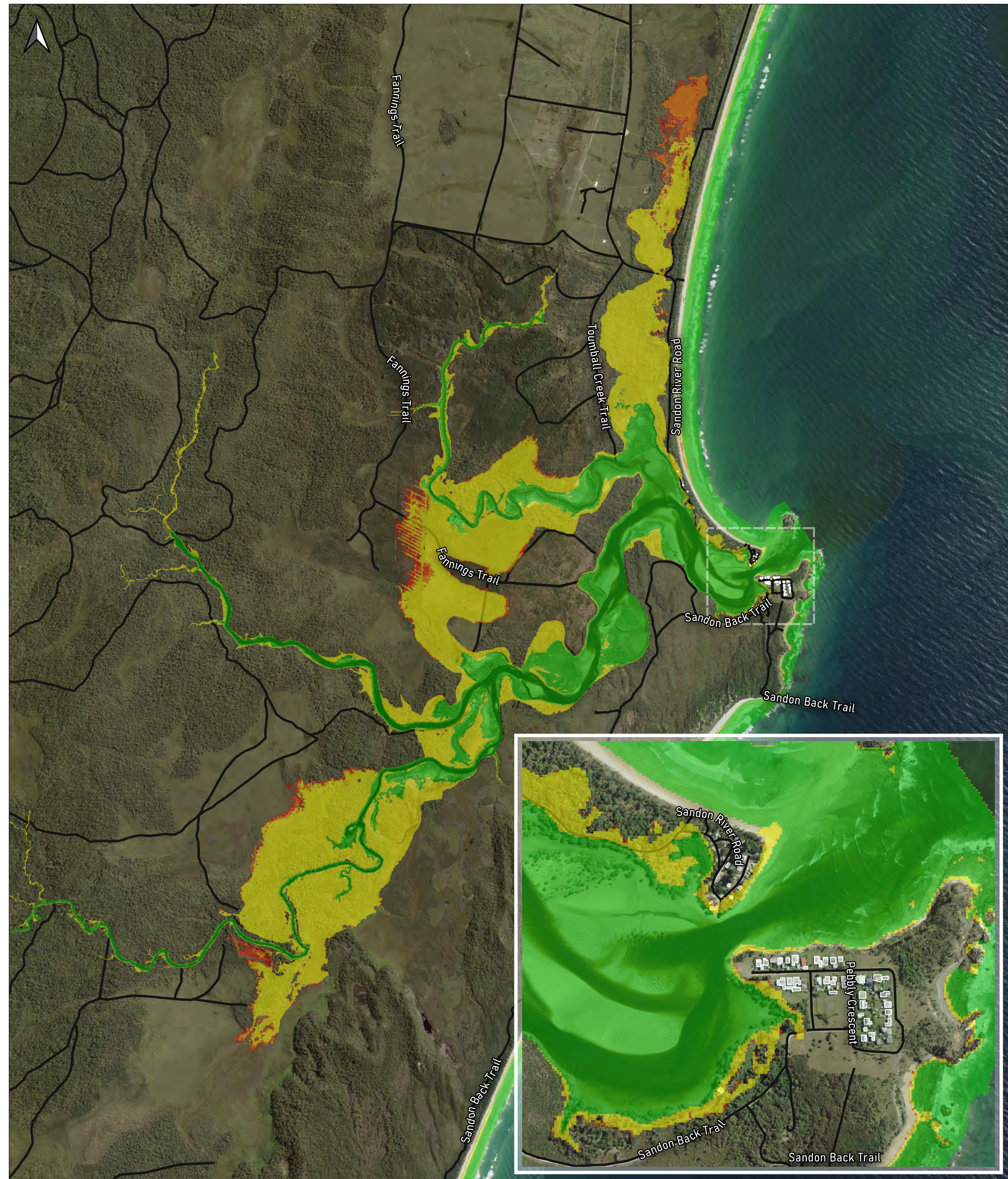
JBPACIFIC does not warrant the accuracy or completeness of the information displayed in this map. Any person using it does so at their own risk. JBPACIFIC shall bear no responsibility or liability for any errors, faults, defects, or omissions in the information.

Title
Sandon Inundation Extents - Present Day

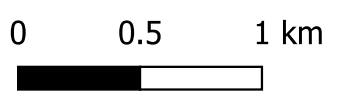
Project
2021s1471 - Hydrosphere - CVC CMP Stage 2 - 4

Client
Hydrosphere Consulting

Data Sources:
Roads © 2019 NSW Government
DCDB (c) 2017 NSW Government
Imagery (c) 2021 NSW SIX Maps



JBPacific (JBP)
jbpacific.com.au
+61 (0)420 644 348
477 Boundary Street
Spring Hill
QLD 4004



Date
13/09/2022

Legend

- Road Centrelines
- 2043 SSP2 Inundation Extents**
- HHWSS
- 10% AEP Storm Tide Level
- 2% AEP Storm Tide Level
- 1% AEP Storm Tide Level

HHWSS - High High Water Solstices Springs
AEP - Annual Exceedance Probability
SSP - Shared Socioeconomic Pathway

PROJECT ID	2021s1471
AUTHOR	CS
LAST MODIFIED	13/09/2022
VERSION	1

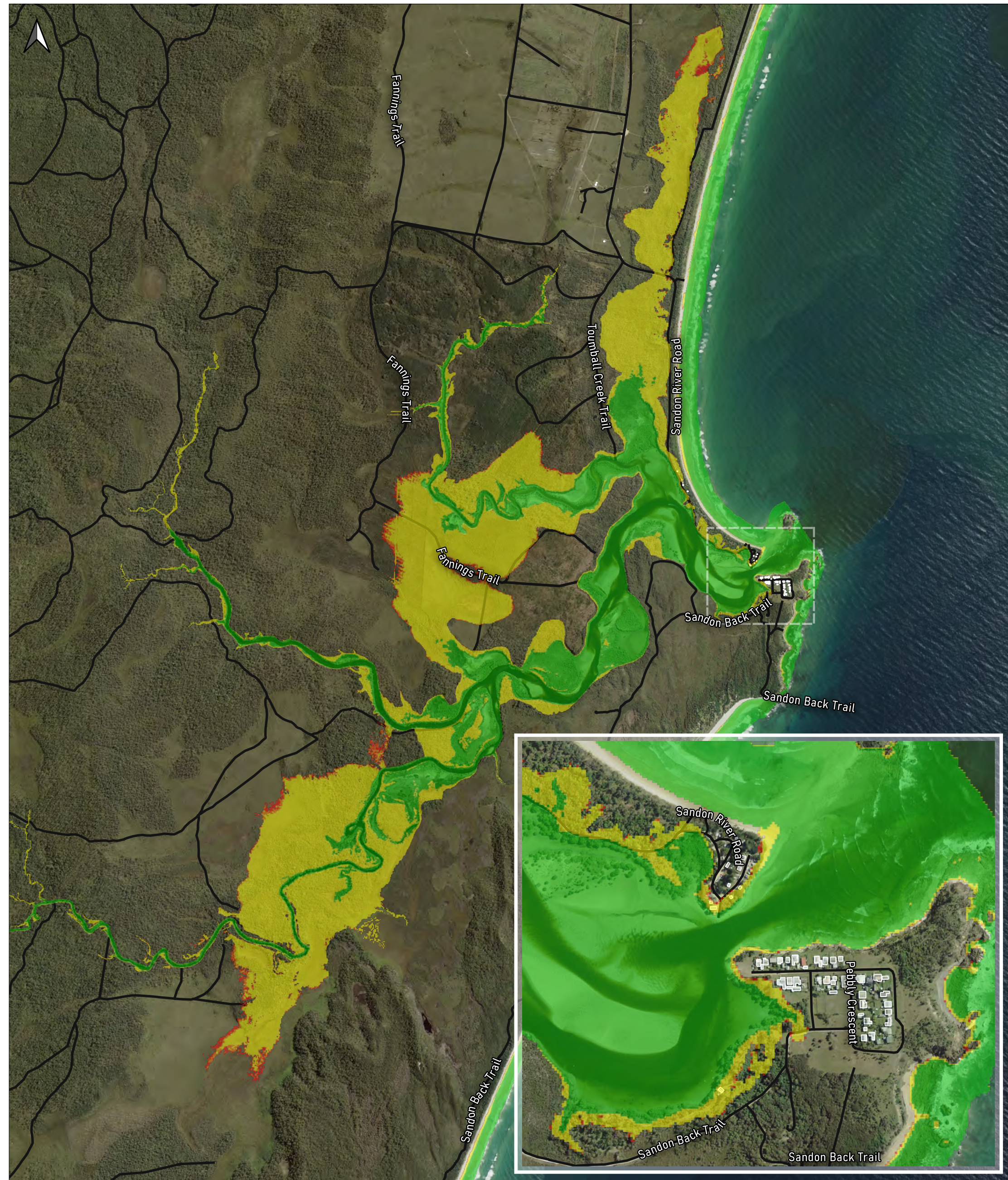
JBPACIFIC does not warrant the accuracy or completeness of the information displayed in this map. Any person using it does so at their own risk. JBPACIFIC shall bear no responsibility or liability for any errors, faults, defects, or omissions in the information.

Title
Sandon Inundation Extents - 2043 SSP2

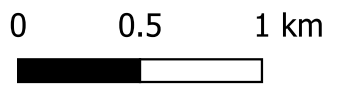
Project
2021s1471 - Hydrosphere - CVC CMP Stage 2 - 4

Client
Hydrosphere Consulting

Data Sources:
Roads © 2019 NSW Government
DCDB (c) 2017 NSW Government
Imagery (c) 2021 NSW SIX Maps



JBPacific (JBP)
jbpacific.com.au
+61 (0)420 644 348
477 Boundary Street
Spring Hill
QLD 4004



Date
13/09/2022

Legend

- Road Centrelines
- 2073 SSP2 Inundation Extents**
- HHWSS
- 10% AEP Storm Tide Level
- 2% AEP Storm Tide Level
- 1% AEP Storm Tide Level

HHWSS - High High Water Solstices Springs
AEP - Annual Exceedance Probability
SSP - Shared Socioeconomic Pathway

PROJECT ID	2021s1471
AUTHOR	CS
LAST MODIFIED	13/09/2022
VERSION	1

JBPACIFIC does not warrant the accuracy or completeness of the information displayed in this map. Any person using it does so at their own risk. JBPACIFIC shall bear no responsibility or liability for any errors, faults, defects, or omissions in the information.

Title

Sandon Inundation Extents - 2073 SSP2

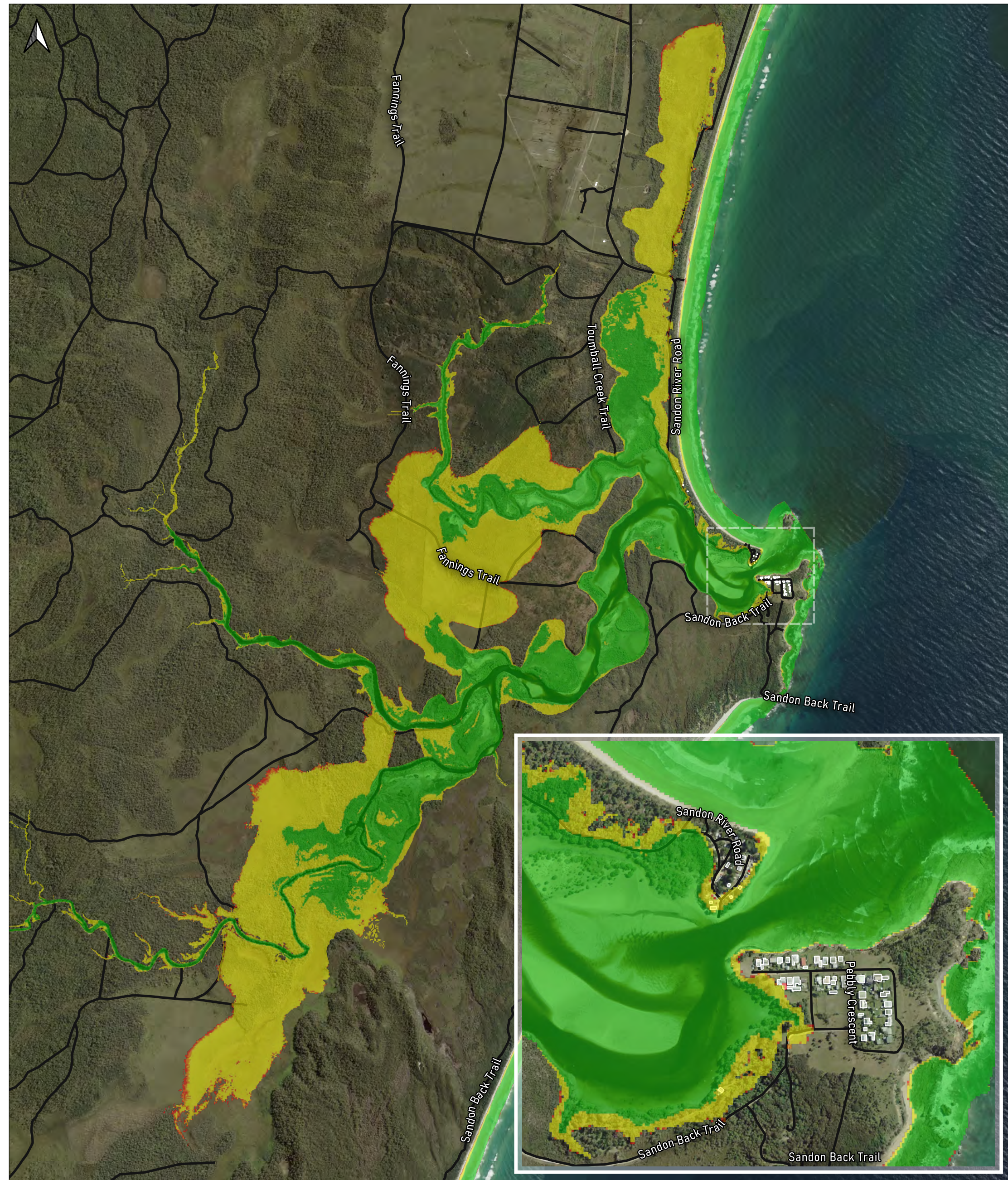
Project

2021s1471 - Hydrosphere - CVC CMP Stage 2 - 4

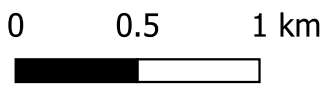
Client

Hydrosphere Consulting

Data Sources:
Roads © 2019 NSW Government
DCDB (c) 2017 NSW Government
Imagery (c) 2021 NSW SIX Maps



JBPacific (JBP)
jbpacific.com.au
+61 (0)420 644 348
477 Boundary Street
Spring Hill
QLD 4004



Date
13/09/2022

Legend

- Road Centrelines
- 2123 SSP2 Inundation Extents**
- HHWSS
- 10% AEP Storm Tide Level
- 2% AEP Storm Tide Level
- 1% AEP Storm Tide Level

HHWSS - High High Water Solstices Springs
AEP - Annual Exceedance Probability
SSP - Shared Socioeconomic Pathway

PROJECT ID	2021s1471
AUTHOR	CS
LAST MODIFIED	13/09/2022
VERSION	1

JBPACIFIC does not warrant the accuracy or completeness of the information displayed in this map. Any person using it does so at their own risk. JBPACIFIC shall bear no responsibility or liability for any errors, faults, defects, or omissions in the information.

Title

Sandon Inundation Extents - 2123 SSP2

Project

2021s1471 - Hydrosphere - CVC CMP Stage 2 - 4

Client

Hydrosphere Consulting

Data Sources:
Roads © 2019 NSW Government
DCDB (c) 2017 NSW Government
Imagery (c) 2021 NSW SIX Maps