



Important information is contained in the 'red box' tips throughout this document, please take note of these.

DEPARTMENT OF PLANNING, INDUSTRY & ENVIRONMENT

Release notes: April 2020 - Updates to the BAM Calculator (BAM-C) data

Information for Accredited Assessors





Summary of the BAM-C data update April 2020

The intention of the release notes is to inform assessors about data updates in the BAM-C, and what to expect when opening an existing BAM-C case after this data import.

This update includes:

- New information relating to geographic limitations of threatened species;
- the addition of a number of entities at potential risk of SAI;
- Potorous tridactylus (Long-nosed Potoroo) credit class change from an ecosystem credit species (Predicted) to a species credit species (Candidate);
- minor changes to survey months, habitat constraints, PCT and IBRA subregion associations for a range of species;
- the addition of the newly listed species Hibbertia circinate
- The use of new common names for a suite of PCT

This update is part of the regular 6-monthly updates to the biodiversity data that supports the BAM-C and the identification of entities at potential risk of SAI.

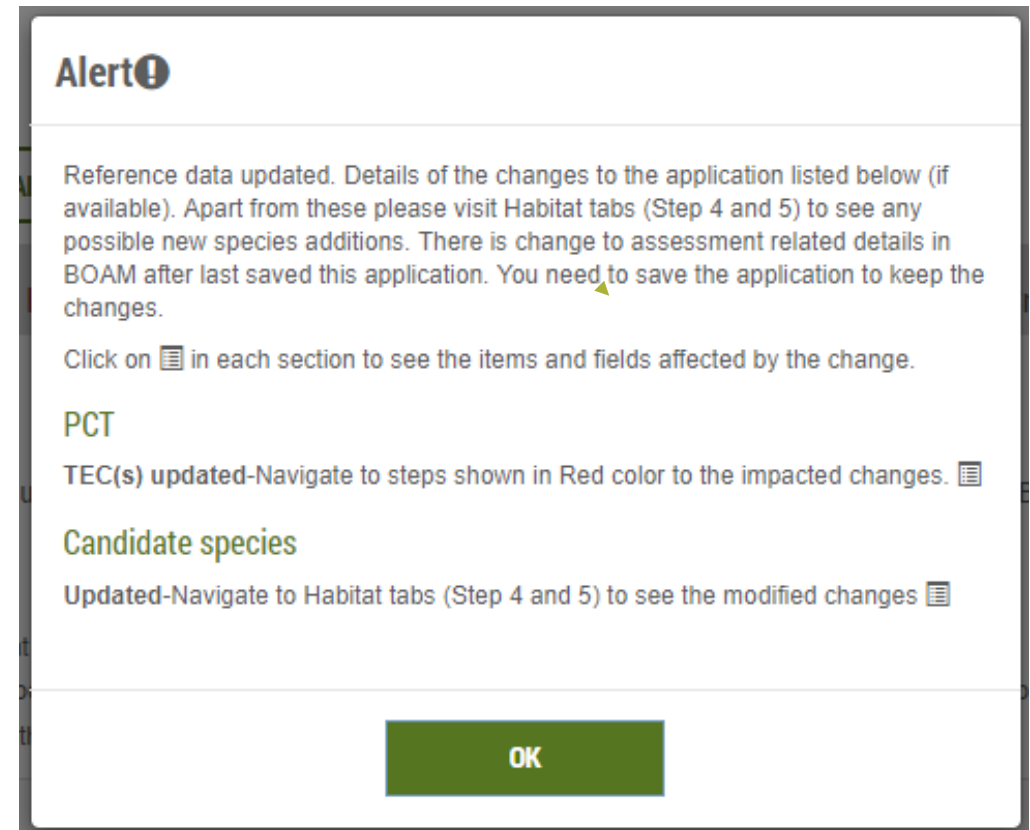


Alert: Opening an existing case

When an assessor opens an in-progress case in the BAM-C for the first time after the data import has occurred, you are likely to receive an alert indicating reference data has been updated.

The information in the message will indicate what data in your proposal has been updated by the import.

The alert will look something like this.



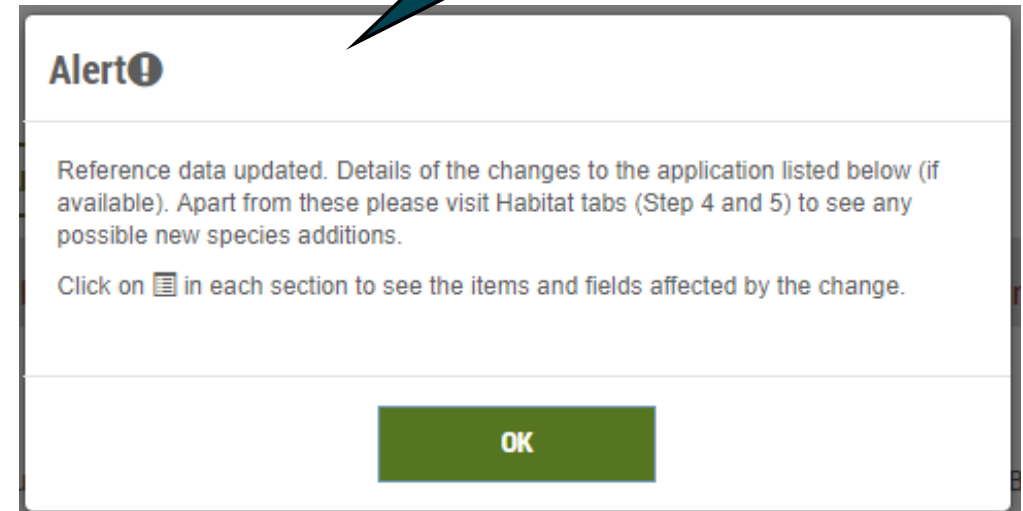


Scenario 1: No data has been updated

If your existing data is unaffected by the import, the alert will not provide additional details.

Note that species added to, or removed from a case, either newly listed or as a result of modifications to PCT/IBRA subregion associations, will NOT display in the alert – the alert will only display information on the updated data.

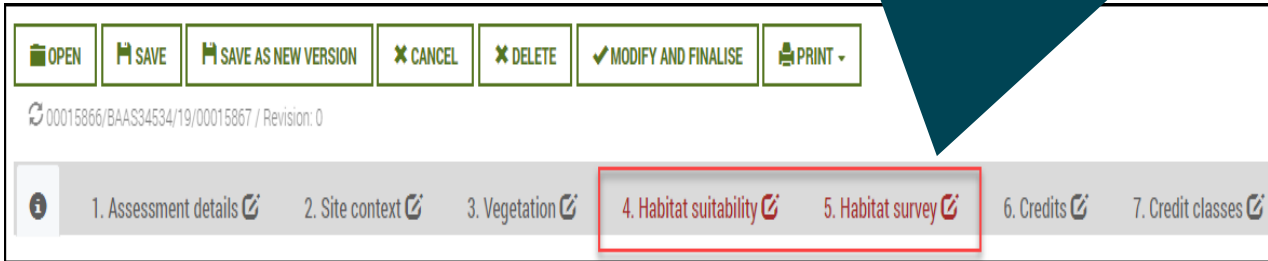
General alert with no details.





Scenario 1: Update tab 4 and tab 5

Even if your case has not been updated with new data, tab 4: Habitat suitability and tab 5: Habitat survey may now be displayed in red text. This is because newly listed species, or extensions to the habitat for currently listed species may now appear in the list of predicted or candidate threatened species. You will need to review this list and assess any new species that have been added. New species that require assessment can be identified by a star next to their name.



You will need to click 'Next' at the bottom of each tab to enable the case to be finalised at a later date, even if you have made no edits.



Remember to click 'Next'

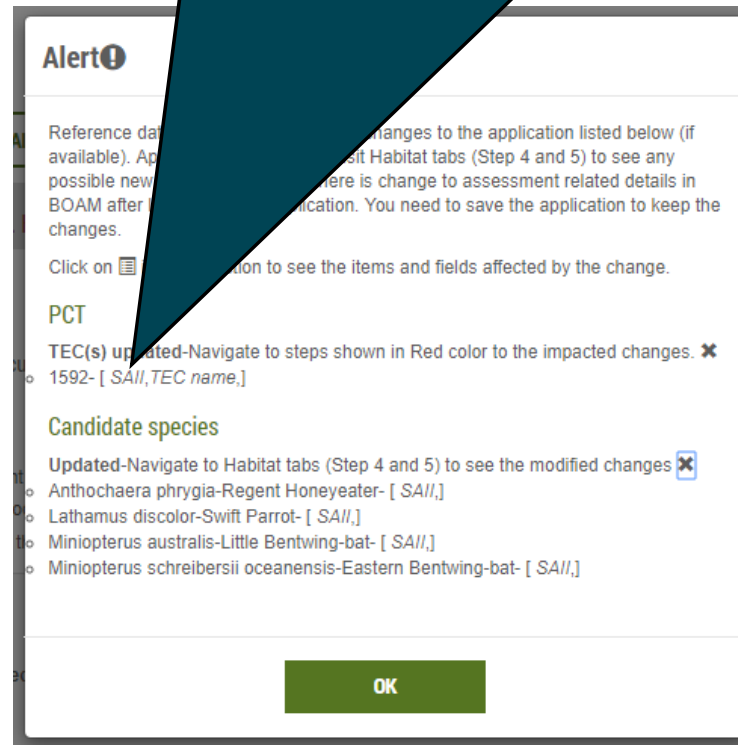
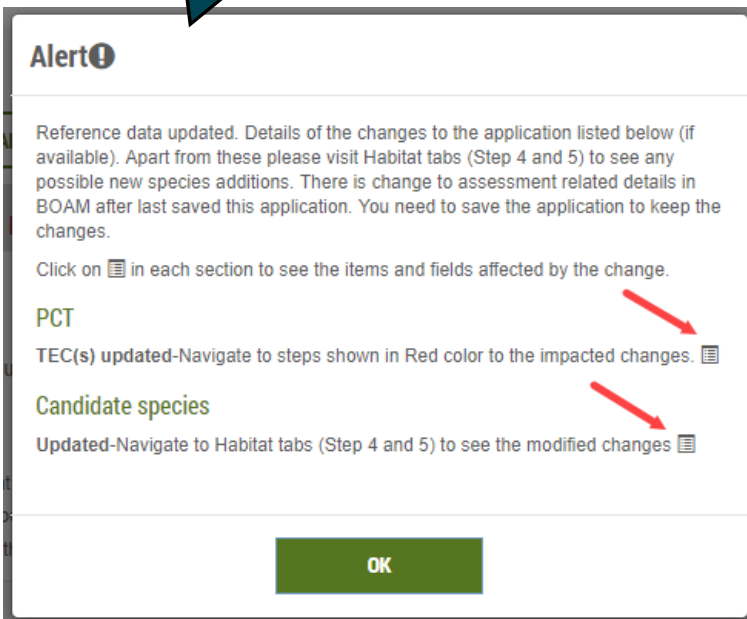


Scenario 2: My data has been updated

The information alert will provide you with further information when PCT, TEC or species information has been updated by the data import.

To view more information about the change, simply click on the table icon. This will display the species or TECs impacted

Note that new species that require assessment, either newly listed or as a result changes to PCT/IBRA subregion associations, will not display in the alert. The alert only displays updates to existing data in your proposal.



Take a screenshot of the alert for future reference. The alert will disappear once the case has been saved.



Scenario 2: Updating data in Tab 3 - Vegetation

Where a TEC or PCT has updated data, the alert will list the TEC or PCT affected as well as the field name of the field affected.

Alert!

Reference data updated. Details of the changes to the application listed below (if available). Apart from these please visit Habitat tabs (Step 4 and 5) to see any possible new species additions.

Click on in each section to see the items and fields affected by the change.

PCT

PCT details updated-Navigate to steps shown in Red colour to the impacted changes. ✕
1601- [PCT % cleared,]

TEC(s) updated-Navigate to steps shown in Red color to the impacted changes.

Alert!

Reference data updated. Details of the changes to the application listed below (if available). Apart from these please visit Habitat tabs (Step 4 and 5) to see any possible new species additions. There is change to assessment related details in BOAM after last saved this application. You need to save the application to keep the changes.

Click on in each section to see the items and fields affected by the change.

PCT

TEC(s) updated-Navigate to steps shown in Red color to the impacted changes. ✕
1592- [SAll, TEC name,]

OK

Remember to click 'Next'



Decommissioned: Tab 3 - Vegetation

Where a PCT has been decommissioned, the alert will indicate PCT's that are impacted.

Alert!

Reference data updated. Details of the changes to ... (available). Apart from these please visit Habitat tab ... possible new species additions. There is change to ... BOAM after last saved this application. You need to save the ... changes.

Click on in each section to see the items and ... affected by the change.

PCT

TEC(s) updated-Navigate to steps shown in Red color to the impacted changes.

1619- [Invalid TEC,]

OK

Plant community types (PCT) & ecological communities

Formation *	Class *	Plant community type *	PCT % cleared	Associated TEC *
Dry Sclerophyll Forests (Shrubby sub-formation)	Sydney Coastal Dry Sclerophyll Forests	1619 - Smooth-barked Apple - Red Bloodwood - Brown Stringybark - Hairpin Banksia healthy open forest of coastal lowlands Invalid PCT! Please update.	45	Not a TEC

ADD ANOTHER PCT **SEARCH PCT OUTSIDE IBRA**

IMPORT SITE Vegetation zones (Current vegetation integrity score)

#	Import	PCT code	Condition class *	Vegetation zone name	Patch Size*	Area (ha)*	Lo
1		1619	Dummy	1619_Dummy	101	2.4	

The vegetation zone data will not be deleted when the PCT is removed and replaced with another. This allows the new PCT code to be added to the existing data.

We strongly recommended that you check the Veg-C database before assuming that the alert is correct. In some instances, data breakages between Veg-C and BAM-C can cause an 'Invalid TEC', 'Invalid PCT' or 'Delisted PCT' alert.



The invalid PCT alert is incorrect: Tab 3 - Vegetation

Formation *	Class *	Plant community type *	PCT % cleared	Associated
Wet Sclerophyll Forests (Grassy sub-formation)	Southern Lowland Wet Sclerophyll forests	1212 - Spotted Gum - Grey Ironbark - Woollybutt grassy open forest on coastal flats, southern Sydney Basin Bioregion and South East Corner Bioregion	35	

Alert!
Reference data updated. Details of the changes to the application listed below (if available). Apart from these please visit Habitat tabs (Step 4 and 5) to see any possible new species additions.
Click on [icon] in each section to see the items and fields affected by the update.
PCT
Delisted-PCT(s) not longer valid. Please visit 3.Vegetation tab and update the PCT(s).
1212- []
1220- []

Invalid PCT! Please update.

Sometimes due to a data breakage, a PCT may display as invalid, and will no longer be available in BAM-C, even though it is still valid in Veg-C.

Formation *	Class *	Plant community type *	PCT %
Semi-arid Woodlands (Grassy sub-formation)	Inland Floodplain Woodlands	630 - Black Box - Silver Saltbush chenopod open woodland on terrace rises on alluvial plains in the lower Darling River and lower Murray River region of the Murray Darling Depression Bioregion	67

Invalid PCT! Please update.

ADD ANOTHER PCT SEARCH PCT OUTSIDE IBRA

- 13 - Black Box - Lignum woodland wetland of t
- 15 - Black Box open woodland wetland with ch
- 18 - Black Box grassy open woodland wetland
- 630 - Black Box - Silver Saltbush chenopod op

If this happens, simply delete the PCT, then re-add the same PCT. Your vegetation Zone data will be retained.

If you identify a PCT that is valid in Veg-C, but is displaying an 'invalid' or 'delisted' message in BAM-C, please inform BAM Support.



Scenario 2: Tab 4 - Habitat suitability

Alert!

Reference data updated. Details of the changes to the application listed below (not all available). Apart from these please visit Habitat tabs (Step 4 and 5) to see any possible new species additions.

Click on in each section to see the items and fields affected by the change.

Candidate species

Updated-Navigate to Habitat tabs (Step 4 and 5) to see the modified changes.

- Eucalyptus aggregata-Black Gum- [*Geographic limitations.*]
- Genoplesium baueri-Bauer's Midge Orchid- [*Geographic limitations.*]

The alert will identify fields that have been updated in Tab 4. This may include survey months, SAI or geographic limitations. You will need to determine how the updates affect your assessment. You must confirm the information you previously entered meets any new requirements before finalising the proposal.

Candidate threatened species (Species credits)

Species	Habitat constraints	Habitat degraded
<i>Eucalyptus aggregata</i> Black Gum		
<i>Genoplesium baueri</i> Bauer's Midge Orchid		
<i>Grevillea parviflora subsp. parviflora</i> Small-flower Grevillea	--	--
★ <i>Grevillea raybrownii</i> Grevillea raybrownii		

Existing species with updated data.

New species in the proposal.

Any newly species that now require assessment will display a star next to their name (assessment is required). These will NOT have been listed in the initial alert.

Any species that have been assessed previously will not display a star but may display updated data.

Remember to click 'Next'



Scenario 2: Tab 5 - Habitat survey

When the data update removes the survey month of the original survey, the case will have no month selected.

You will need to re-survey during the updated months unless you can justify that the survey was done in a month likely to detect the species. In this case, you can tick the 'Survey months outside the specified months' box and select the survey month.

Original month surveyed, prior to data import.

Species	Species presence	Survey timetable	UOM	Veg Zone & Value
Acacia flocktoniae Flockton Wattle	No (surveyed)	<input checked="" type="checkbox"/> Jan <input type="checkbox"/> Feb <input type="checkbox"/> Mar <input type="checkbox"/> Apr <input type="checkbox"/> May <input type="checkbox"/> Jun <input type="checkbox"/> Jul <input type="checkbox"/> Aug <input type="checkbox"/> Sep <input type="checkbox"/> Oct <input type="checkbox"/> Nov <input type="checkbox"/> Dec <input type="checkbox"/> Survey month outside the specified months?	Area (ha)	<input checked="" type="checkbox"/> 1155_good 1.2

Alert

Reference data updated. Details of the changes to the application listed below (if available). Apart from these please visit Habitat tabs (Step 4 and 5) to see any possible new species additions.

Click on in each section to see the items and fields affected by the change.

Candidate species

[Updated-Navigate to Habitat tabs](#) (Step 4 and 5) to see the modified changes

Acacia flocktoniae-Flockton Wattle- Sensitivity to gain class, Level of Biodiversity Concern, Offset Multiplier, Months of survey,]

OK

Species	Species presence	Survey timetable	UOM	Veg Zone & Value
Acacia flocktoniae Flockton Wattle	Yes (surveyed)	<input type="checkbox"/> Jan <input type="checkbox"/> Feb <input type="checkbox"/> Mar <input type="checkbox"/> Apr <input type="checkbox"/> May <input type="checkbox"/> Jun <input checked="" type="checkbox"/> Jul <input type="checkbox"/> Aug <input type="checkbox"/> Sep <input type="checkbox"/> Oct <input type="checkbox"/> Nov <input type="checkbox"/> Dec <input type="checkbox"/> Survey month outside the specified months?	Area (ha)	<input checked="" type="checkbox"/> 1155_good 1.2

Remember to click 'Next'



Impacts to credit calculations: Addition or removal of species

Species may automatically be added to an existing case if:

- The species is newly listed and is associated with your IBRA subregion and PCT(s);
- The PCT or IBRA subregion associations for a species are updated to include the PCT(s) or IBRA subregion in your case.

Newly added species will not display in the alert, but will display a star next to their names in tabs 4 and 5.

Species may also be automatically removed from an existing case if:

- The PCT associations for a species are updated to remove the PCT(s) in your case;
- The IBRA subregion associations for a species are updated to remove the subregion in your case.

Note that if you have previously identified one of these removed species as being on the subject land you will need to search for, and add, the species back into the predicted (ecosystem credit) or candidate (species credit) species list.



Impacts to credit calculations: Biodiversity risk weighting and SAI

A number of entities have been added to the list of entities at risk of an SAI. Where a proposal includes one of these entities, the biodiversity risk weighting will change. This will also affect the credit calculation for development, clearing and biodiversity certification proposals.

For newly identified entities at risk of SAI, you must also update your BAR to address the assessment criteria in section 10.2 of the BAM.

The 'Guidance to assist a decision-maker to determine a serious and irreversible impact' and the list of entities are available from the DPIE website at <https://www.environment.nsw.gov.au/biodiversity/seriousirreversibleimpacts.htm>.

You will need to save your changes for them to appear in the reports.

Alert! Reference data available. A possible new candidate species has been identified. Click on each section to see the items and fields affected by the change.

Candidate species

Updated-Navigate to Habitat tabs (Step 4 and 5) to see the modified changes

Grevillea kennedyana-Flame Spider Flower- [Sensitivity to gain class,Level of Biodiversity Concern,Offset Multiplier,SAI,]

Before update.

Vegetation zone name	Habitat condition (vegetation integrity) loss	Area / Count	Biodiversity risk weighting	Potential SAI	Species credits
Grevillea kennedyana / Flame Spider Flower (Flora)					
132_Good	54.5	0.9 hectares	2.00	False	25

After update.

Vegetation zone name	Habitat condition (vegetation integrity) loss	Area / Count	Biodiversity weighting	Potential SAI	Species credits
Grevillea kennedyana / Flame Spider Flower (Flora)					
132_Good	54.5	0.9 hectares	3	True	37



Resources and Support

Assessor resources include:

- DPIE webpages:
 - Accredited assessors website:
 - Assessor resources (links to legislation, databases, manuals and guidelines, assessor correspondence);
 - Assessor frequently asked questions;
 - BAM support webinars;
 - Serious and Irreversible Impacts (SAII) guidance and list of entities at risk;
 - Threatened species profile search;
 - Saving our Species (SoS) program;
 - NSW Scientific Committee Determinations;
- EPBC profile database (species and ecological communities);
- PlantNet (NSW flora online);
- NSW government SEED database (publicly available environmental data);
- BAM Support Mailbox.

If you have any questions,
feedback or issues as a result of
the data import,
please contact us at
bam.support@environment.nsw.gov.au.