

Conservation Action Plan

Kowmung hakea (*Hakea dohertyi*)

This plan has been prepared in accordance with the requirements of s.78C of the National Parks and Wildlife Regulation 2019 (Reg.) in relation to an Asset of Intergenerational Significance (AIS) as declared under s.153G of the *National Parks and Wildlife Act 1974*.

Site details

AIS site	AIS-E0-040
Site location	An area of 3953 hectares in Kanangra-Boyd National Park
NPWS contact	Area Manager, Kanangra Area, Blue Mountains Branch

Environmental values

This table sets out the environmental values for which the land was listed as an AIS (Reg. 78C(3)(a)).

Identified value(s)	Value description
Important habitat for Kowmung hakea	The endangered Kowmung hakea is an erect shrub that grows up to 6 metres tall. Kowmung Hakea grows in a small area (18 sq. km) of the Kowmung Valley in dry sclerophyll forest, usually dominated by grey gum or silvertop ash, with a sparse groundcover and midstorey. This site is the largest known population of the species.

Key risks to environmental values

This table sets out the key risks to the environmental values of the land (Reg. 78C(3)(b)).

Key risk(s)	Description
Inappropriate fire regimes	Inappropriate fire frequency and intensity that limits germination or kills adult plants may lead to a decline or extinction of Kowmung hakea population at the site. This risk is exacerbated by the restricted distribution of the Kowmung hakea.
Feral herbivores	Damage to individual plants and degradation of Kowmung hakea habitat by introduced herbivores, such as feral deer, through browsing and trampling.
Feral pigs	Damage to individual plants and degradation of Kowmung hakea habitat by feral pigs, through browsing and trampling.
Anthropogenic climate change	Changes to weather patterns and climatic conditions as a result of anthropogenic climate change that increase the frequency and intensity of fire may exceed the species adaptive capacity and reduce survivorship of individuals at the site.

Conservation activities

This table sets out the conservation activities required to:

1. Control, abate or mitigate the key risks and
2. maintain, restore and remediate the environmental values of the land (Reg. 78C(3)(c)).

Key risk(s)	Impacted site(s)	Conservation activities
Inappropriate fire regimes	All sites	<ul style="list-style-type: none"> • Develop guidance on the appropriate fire management for the habitat of the Kowmung hakea within 12 months of the adoption of this plan and update as required. This guidance must provide for: <ul style="list-style-type: none"> - maintenance of an appropriate fire regime by developing and implementing a site-specific burn plan for the declared areas - implementation of any required fire protection and response measures in the declared areas - integration of site-specific requirements into NPWS and NSW Government bushfire planning, risk management and operational response arrangements. • Implement fire management consistent with the guidance.
Feral herbivores	All sites	<ul style="list-style-type: none"> • To the extent practicable, reduce the density of feral deer to a level that is not having an ecologically significant impact on the Kowmung hakea, and maintain the density at or below that level by shooting and other approved integrated control measures.
Feral pigs	All sites	<ul style="list-style-type: none"> • To the extent practicable, reduce the density of feral pigs to a level that is not having an ecologically significant impact on the Kowmung hakea, and maintain the density at or below that level by trapping, baiting and shooting.
All risks	All sites	<ul style="list-style-type: none"> • Maintain ex-situ seedbank from genetically representative sample of the population in partnership with an appropriate seedbank facility. • If required, augment the existing population, or establish a new population with ex-situ material.

Other land management activities

Within the declared land there are existing assets and infrastructure of NPWS and other external service providers, including public utilities.

Maintenance operations (including inspection, emergency works and routine and standard maintenance) that are exempt development in accordance with the *Environmental Planning and Assessment Act 1979*, and which are performed on and around existing assets and infrastructure, are authorised under this conservation action plan (CAP) provided such operations are undertaken in a manner that aims to minimise the risk to the declared environmental values of the land and with any other required consents or approvals.

All maintenance operations on the declared land are to be undertaken in accordance with this CAP.

Measuring and reporting

This table sets out the requirements for measuring and reporting on health and condition (Reg. 78C(3)(d)).

Attribute	Metric	Method
Health and condition of the Kowmung hakea population	Population estimate	Design, and implement every 5 years, monitoring to estimate the number of mature (viable) plants in the population.

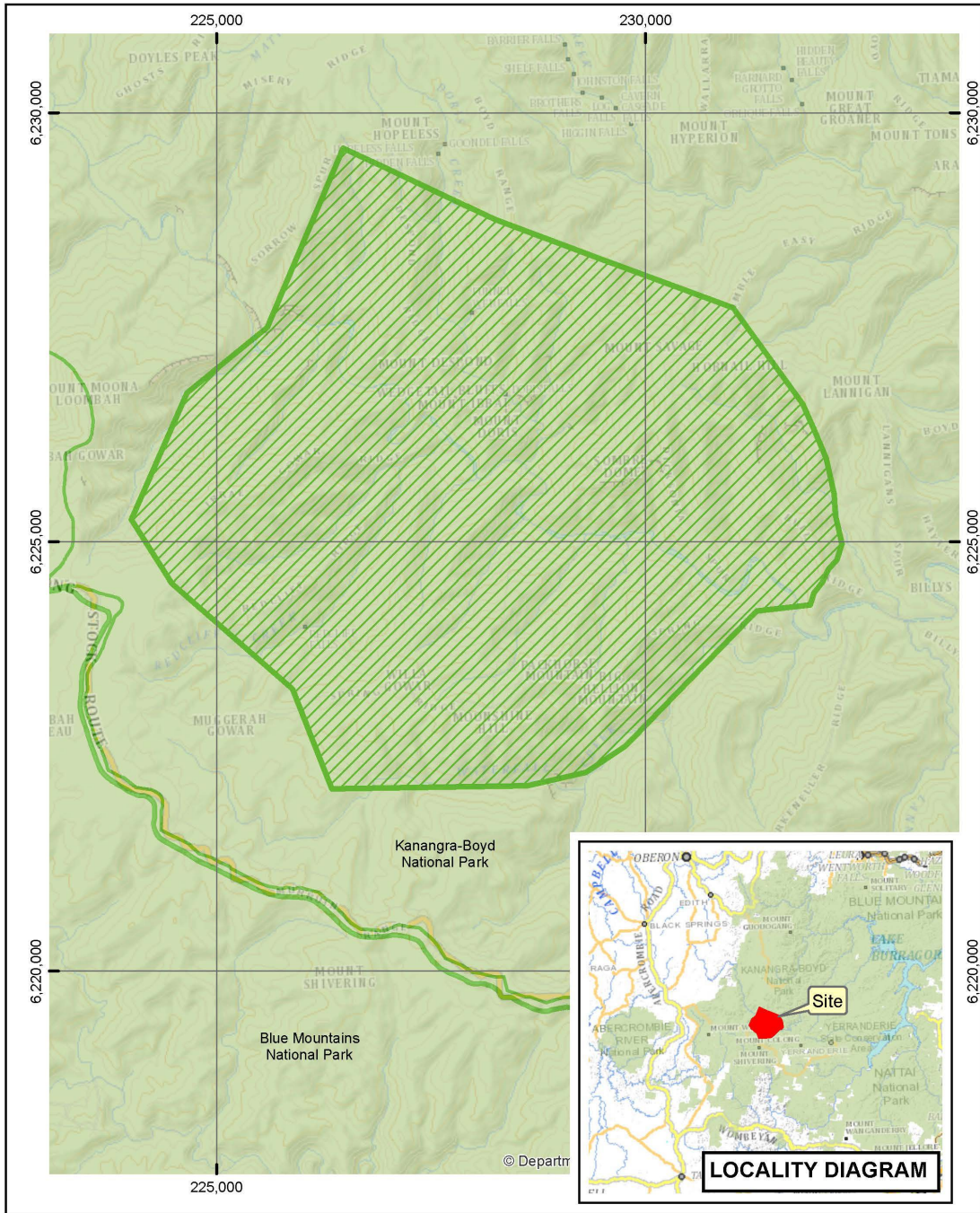
A report on the health and condition of the value for which this AIS was declared will be prepared and published on the Department of Planning and Environment website: www.environment.nsw.gov.au. The report will summarise the baseline and current health and condition of the values of the declared land and its overall trajectory.

Evaluation of conservation action plans



This CAP will be amended or replaced as new information becomes available that helps improve our management of the identified asset (Reg. 78H).

The Secretary must appoint a scientist, or a panel of scientists, to conduct a review, as soon as possible after the period of five years from the first approval of a CAP, to examine whether CAPs have been effectively implemented (Reg. 78J(1)).

Kowmung hakea (*Hakea dohertyi*):
Conservation Action Plan



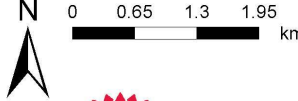
Legend



-  Declared Land
-  NPWS Estate

AIS-E0-040
Asset of Intergenerational Significance
Kowmung hakea (*Hakea dohertyi*)
Kanangra-Boyd National Park

Copyright of Department of Planning Industry and Environment.
This map is not guaranteed to be free from error or omission. The Department and its employees disclaim liability for any act done on the information in the map and any consequences of such acts or omissions.

N 0 0.65 1.3 1.95 km



Kowmung hakea (*Hakea dohertyi*):
Conservation Action Plan

Date prepared	March 2023
Date approved	June 2023
Approved by	Atticus Fleming, Acting Coordinator General, Environment and Heritage Group
Due for review	June 2028

Environment and Heritage, Department of Planning and Environment,
Locked Bag 5022, Parramatta NSW 2124
Phone: 1300 361 967; email: info@environment.nsw.gov.au; www.environment.nsw.gov.au
ISBN 978-1-923018-26-6; EHG2023/0138; July 2023.