

Hunter Region Barrington Tops National Park & Surrounding Reserves Fire Management Strategy (Type 2) 2007

Sheet 4 of 8

This strategy should be used in conjunction with aerial photography and field reconnaissance during incidents and the development of incident action plans.

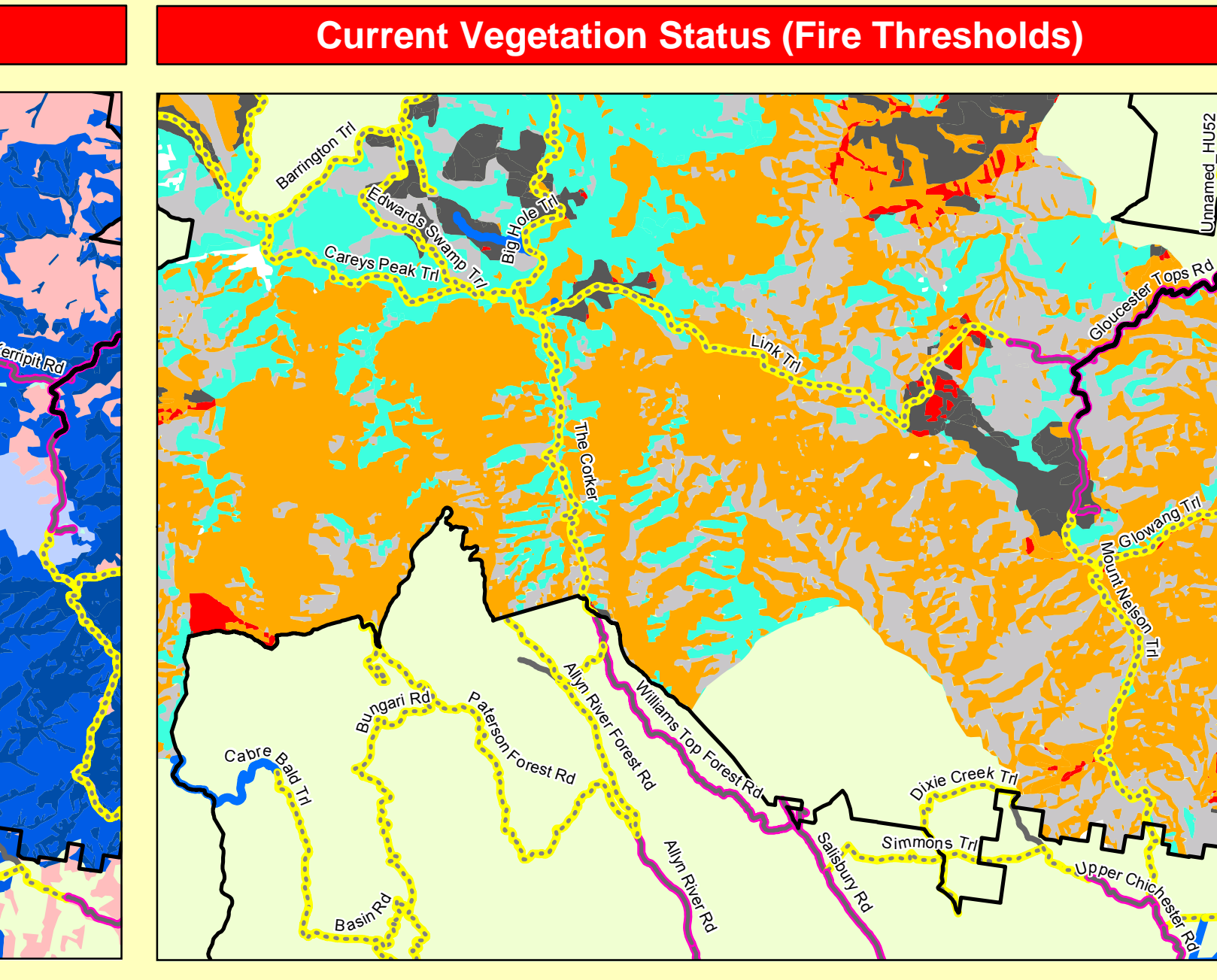
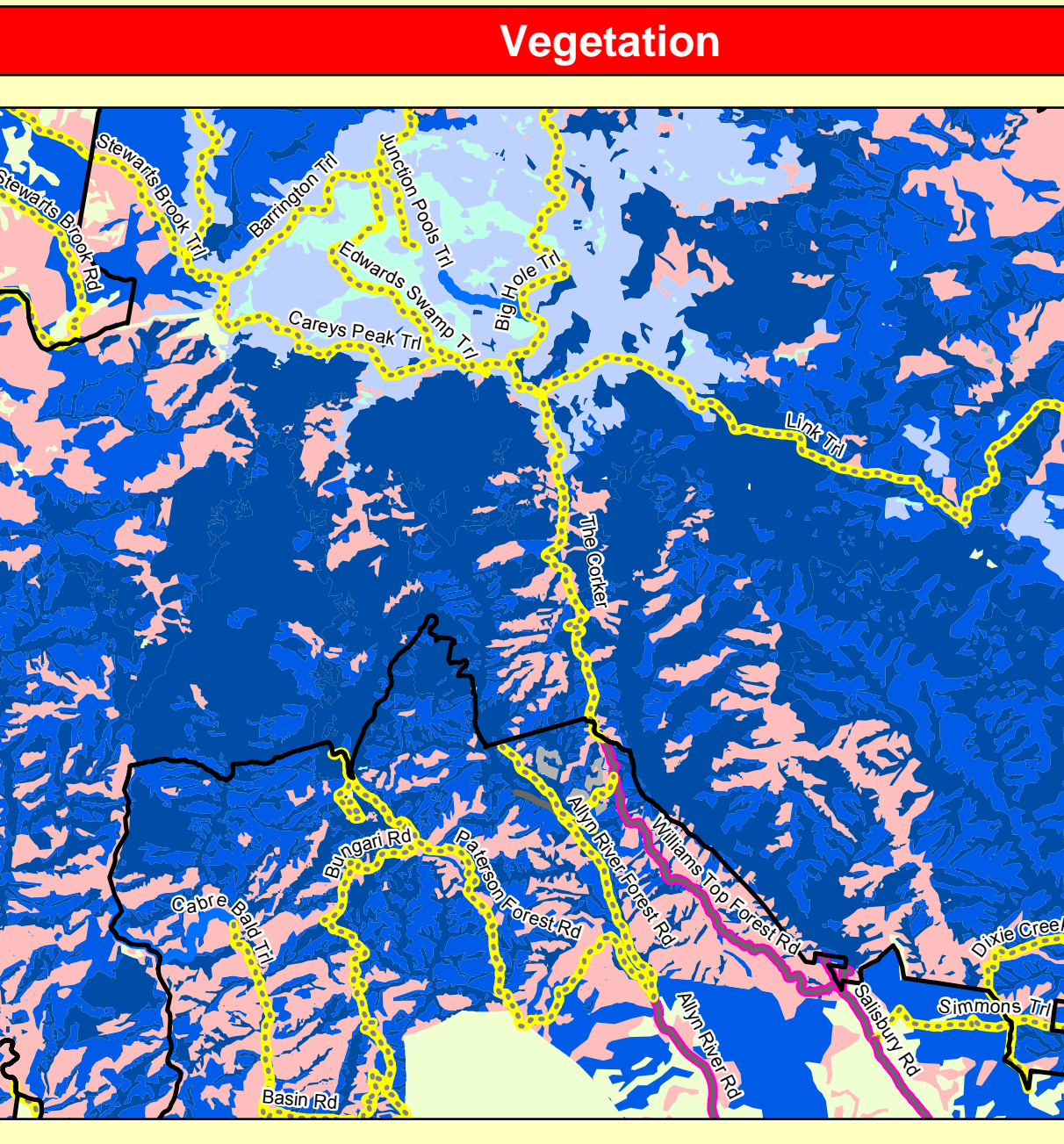
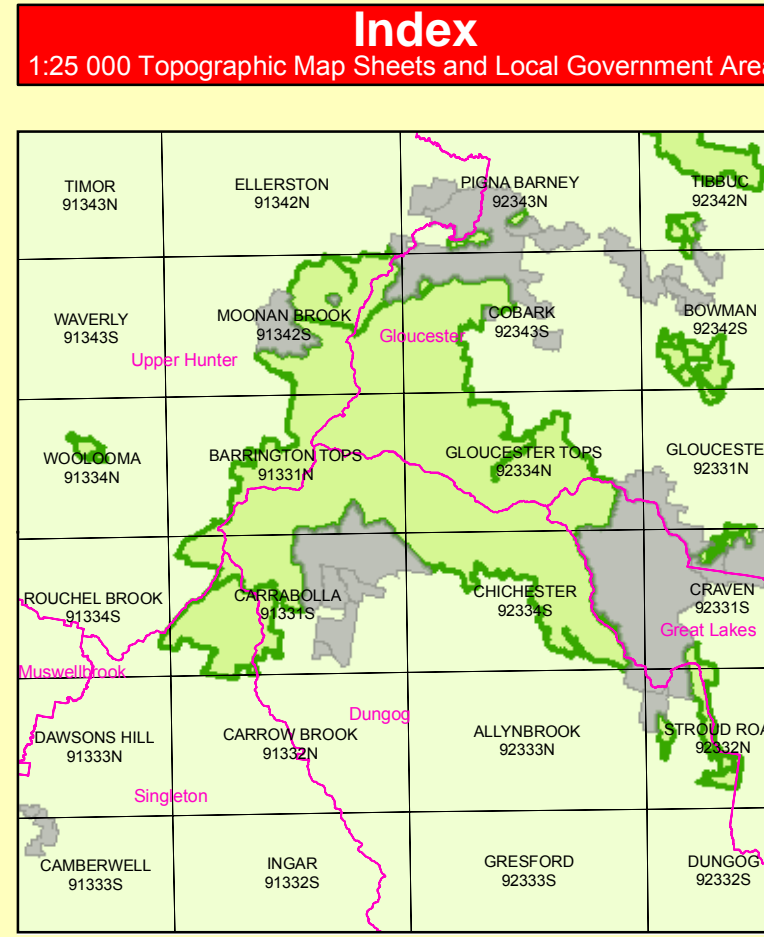
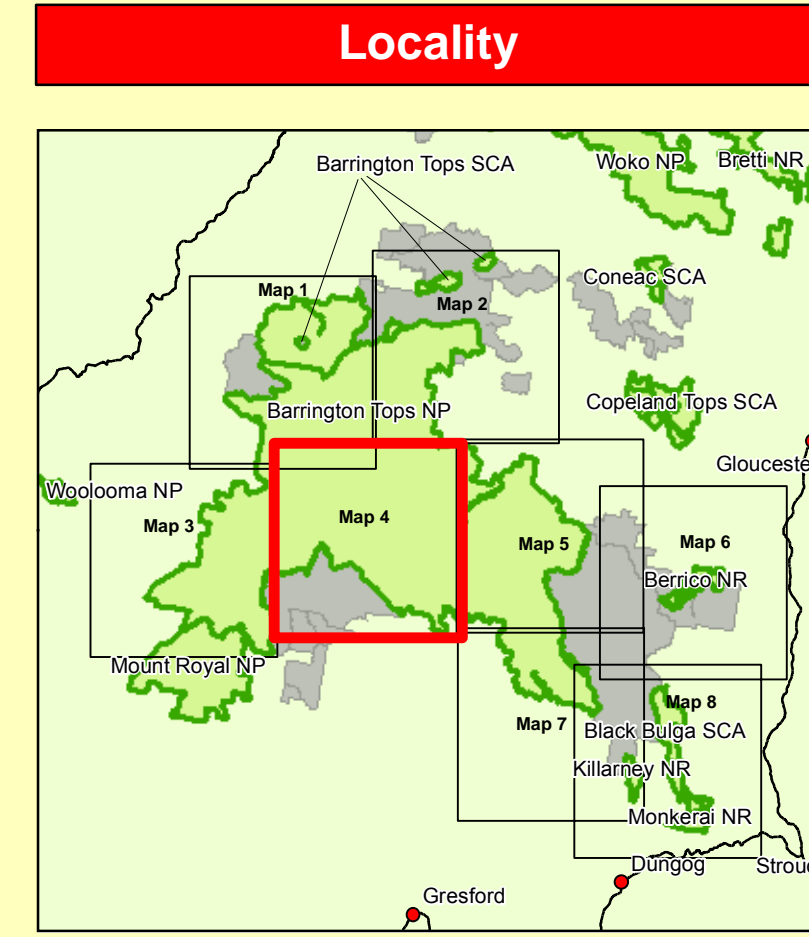
These data are not guaranteed to be free from error or omission. The NSW National Parks and Wildlife and its employees disclaim liability for any loss or damage to the information in this data and any consequences of such loss or damage.

This document is copyright. Apart from any fair dealing for the purposes of study, research, criticism or review, as permitted under the copyright Act, no part may be reproduced by any process without written permission.

The NSW National Parks and Wildlife Service is part of the Department of Environment and Climate Change.
Published by the Department of Environment and Climate Change (NSW), June 2006.
Contact: NSW National Parks and Wildlife Service, Hunter Region, Locked Bag 99, Nelson Bay DC NSW 2315.
ISBN: 9 78 1 74122 6591 DEC Number: 2007 / 548 Last Updated: 18/07/11

Department of Environment and Climate Change (NSW)
This strategy is a relevant Plan under Section 38 (4) and Section 44 (3) of Rural Fires Act 1997

Endorsed by: John O'Gorman
Director Northern, Parks & Wildlife Division
Date: 30/ 6/ 2007



VEGETATION LEGEND

NPWS Estate	Semi-Mesic Grassy Forest	Mangrove/Saltmarsh
Plantation	Native Grassland	Saline Wetland
Introduced	Grassland	Severely Disturbed Vegetation
Artificial Communities	Endangered Sub-Alpine Wet	Endangered Sub-Alpine Wet
Softwood Plantation	And & Semi-And Shrubland	Endangered Box Snow Grass
Grassy Dry Sclerophyll Forest	Foredune	Sub-Alpine Woodland
Sclerophyll Grassy Woodland	Plains Forest	Swamp Sclerophyll Forest
Healthy Woodland	Gedgeland/Rushland	Wet Sclerophyll Forest
Heathland	Serpentine Community	Rainforest
Endangered Box Open Forest	Riparian Forest	Unknown
Shrubby Dry Sclerophyll Forest	Wet Heath	Freshwater Wetland

Fire Thresholds

Too Frequently Burnt	Fire thresholds have been exceeded. Protect from fire as far as possible.
Vulnerable to Frequent Fire	The area will be Too Frequently Burnt if it burns this year. Protect from fire as far as possible.
Within Threshold	Fire history is within the threshold for vegetation in this area. A burn is neither required nor should one necessarily be avoided.
Long Unburnt	Fire frequency is below fire thresholds in the area. A prescribed burn may be advantageous. Consider allowing unplanned fires to burn.
Unknown	Insufficient data to determine fire threshold.
No Regime Assigned	Areas which do not have recommended fire intervals assigned to them eg. cleared land, rock.

NB. Fire thresholds are defined for vegetation communities to conserve biodiversity

