

Hunter Region Barrington Tops National Park & Surrounding Reserves Fire Management Strategy (Type 2) 2007 Sheet 5 of 8

This strategy should be used in conjunction with aerial photography and field reconnaissance during incidents and the development of incident action plans.

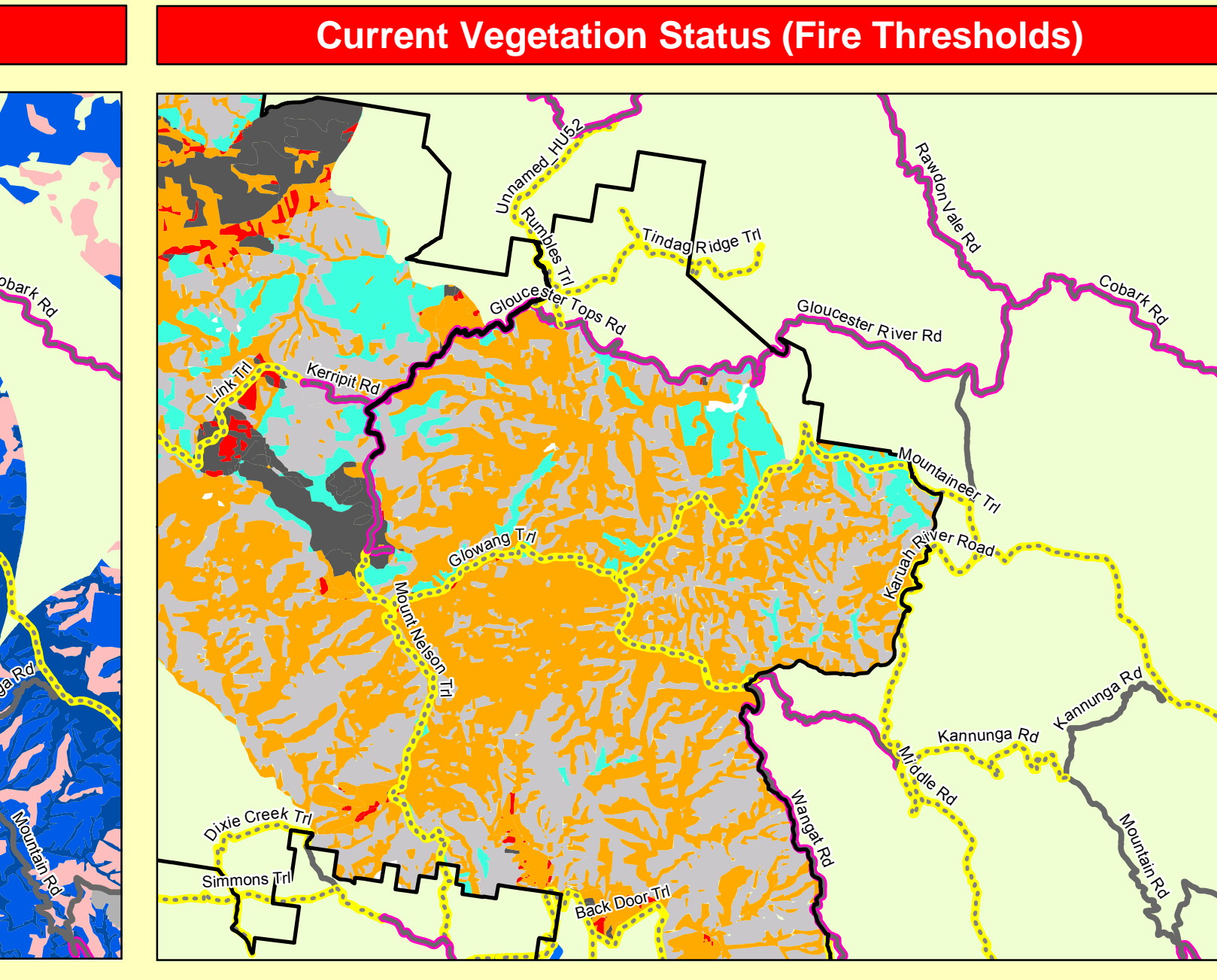
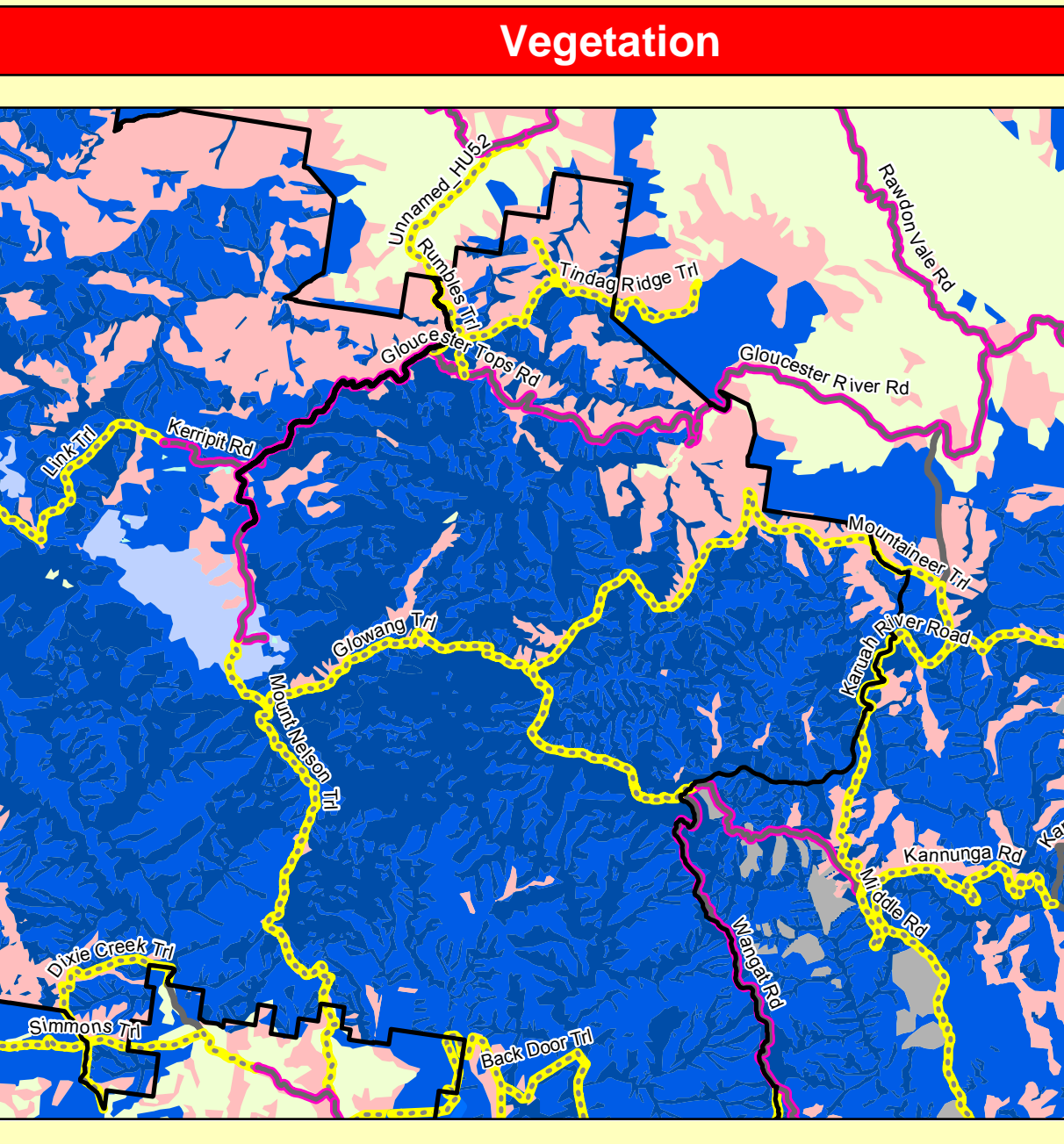
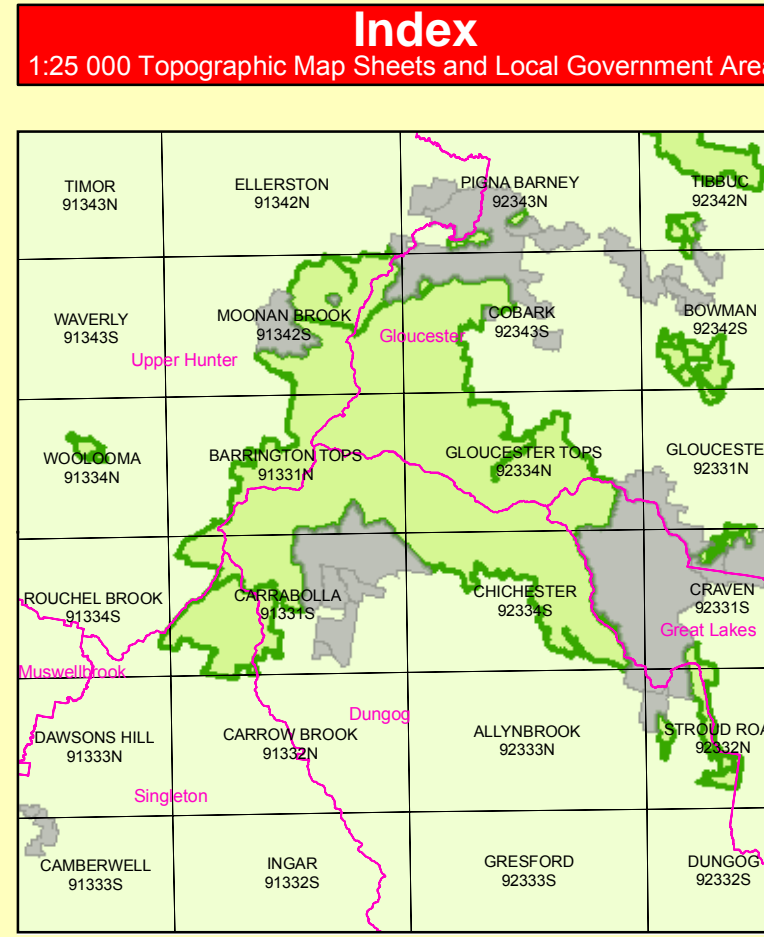
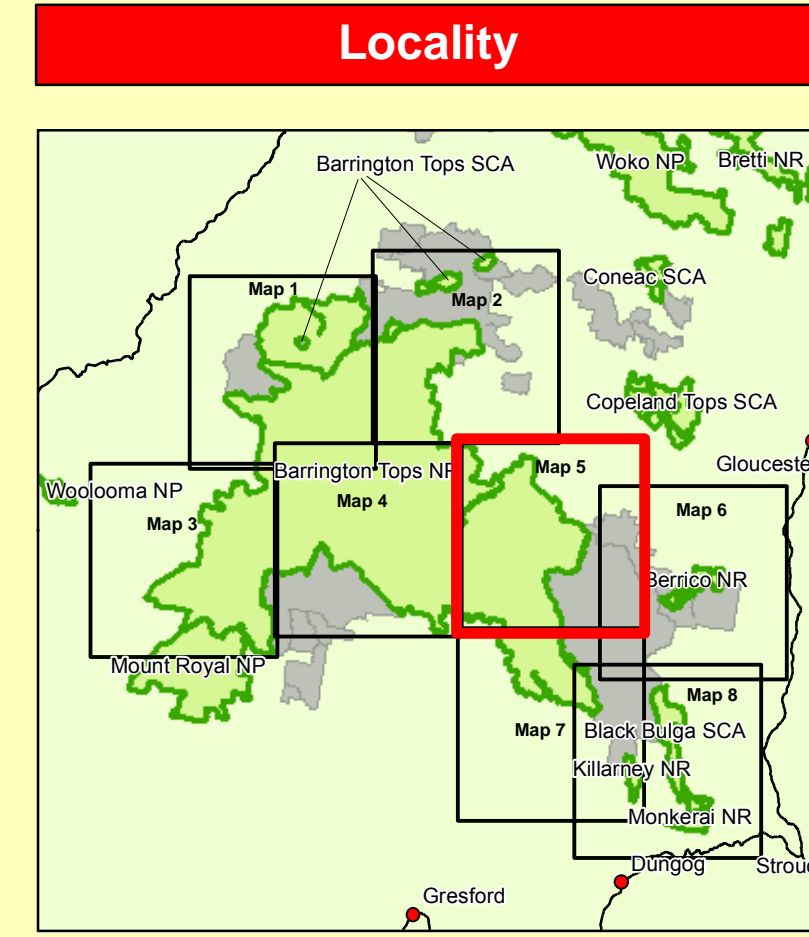
These data are not guaranteed to be free from error or omission. The NSW National Parks and Wildlife Service and its employees disclaim liability for any and all damage or injury to persons or property arising from the use of these data.

This document is copyright. Apart from any fair dealing for the purpose of study, research, criticism or review, as permitted under the Copyright Act, no part may be reproduced by any process without written permission.

Published by the Department of Environment and Climate Change (NSW), June 2006.
Contact: NSW National Parks and Wildlife Service, Hunter Region, Locked Bay 99, Nelson Bay NSW 2315.
ISBN: 9 78 1 74122 6591 DEC Number: 2007 / 548 Last Updated: 18/01/11

This strategy is a relevant Plan under Section 38 (4) and Section 44 (3) of Rural Fires Act 1997.

Endorsed by: John O'Gorman Date: 30/ 6/ 2007
Director Northern, Parks & Wildlife Division



VEGETATION LEGEND

NPWS Estate	Semi-Mesic Grassy Forest	Mangrove/Saltmarsh
Plantation	Native Grassland	Saline Wetland
Introduced	Grassland	Severely Disturbed Vegetation
Artificial Communities	Endangered Sub-Alpine Wet	Endangered Box Snow Grass
Softwood Plantation	Forebush	Sub-Alpine Woodland
Grassy Dry Sclerophyll Forest	Plains Forest	Swamp Sclerophyll Forest
Sclerophyll Grassy Woodland	Sedge/land/Rushland	Wet Sclerophyll Forest
Healthy Woodland	Serpentine Community	Rainforest
Heathland	Riparian Community	Unknown
Endangered Box Open Forest	Wet Heath	Freshwater Wetland
Shrubby Dry Sclerophyll Forest		

Fire Thresholds

Too Frequently Burnt	Fire thresholds have been exceeded. Protect from fire as far as possible.
Vulnerable to Frequent Fire	The area will be Too Frequently Burnt if it burns this year. Protect from fire as far as possible.
Within Threshold	Fire history is within the threshold for vegetation in this area. A burn is neither required nor should one necessarily be avoided.
Long Unburnt	Fire frequency is below fire thresholds in the area. A prescribed burn may be advantageous. Consider allowing unburned areas to burn.
Unknown	Insufficient data to determine fire threshold.
No Regime Assigned	Areas which do not have recommended fire intervals assigned to them eg. cleared land, rock.

NB. Fire thresholds are defined for vegetation communities to conserve biodiversity.

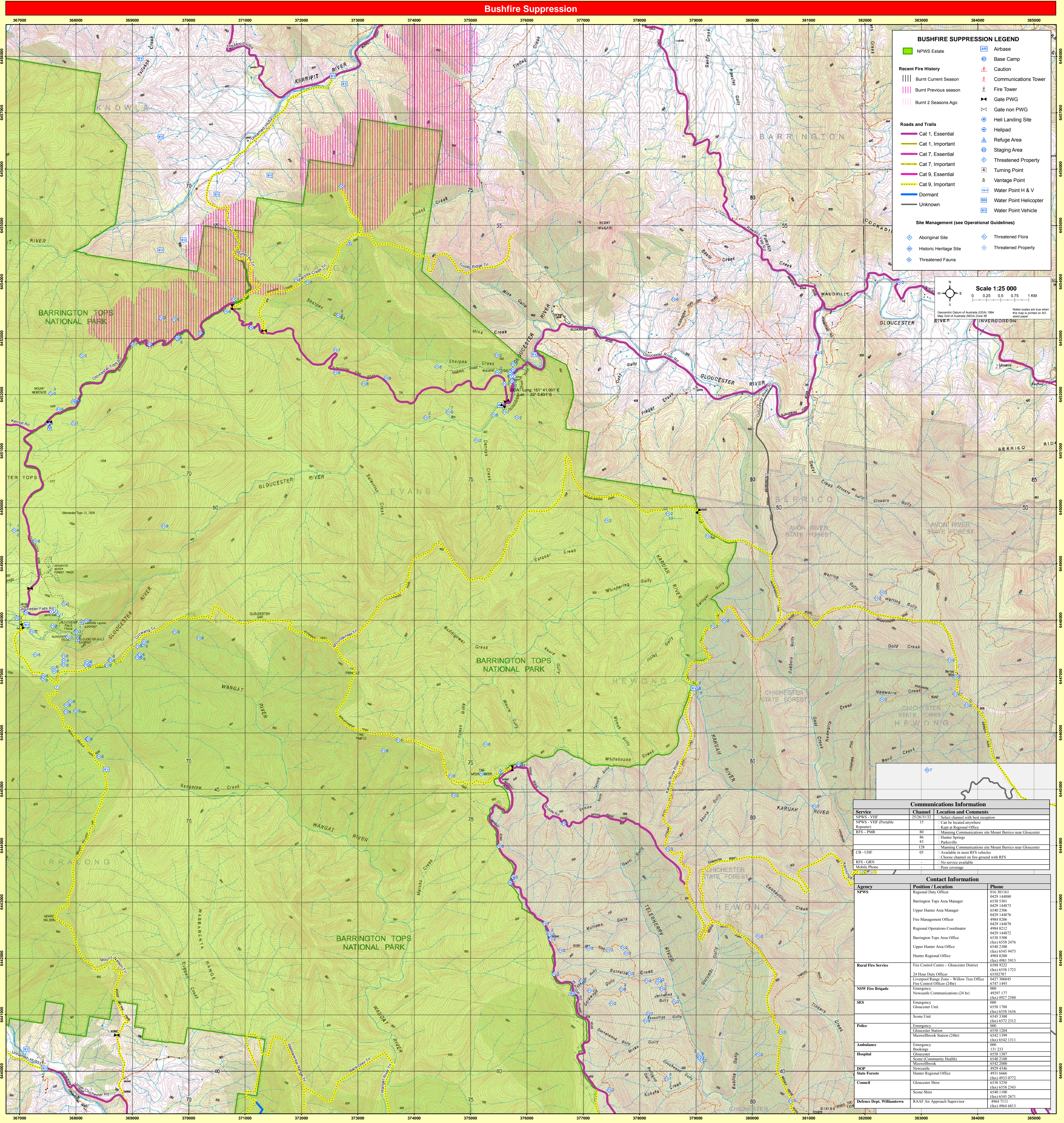
Risk Management Information

Fire Management Zones

Asset Protection Zone	The objective of APZs is the protection of human life and property. This will have precedence over guidelines for the management of biodiversity. Maintain Overall Fuel Hazard at Moderate or below.
Strategic Fire Zone	The objective of SFAZs is to reduce fire intensity across larger areas. Maintain Overall Fuel Hazard at High or below, however adherence to guidelines for biodiversity will take precedence where practical.
Land Management Zone	The objective of LZs is to conserve biodiversity and protect cultural heritage. Manage the vegetation with fire thresholds.

RISK MANAGEMENT LEGEND

- NPWS Estate
- Roads and Trails
- Cat 1, Essential
- Cat 1, Important
- Cat 7, Essential
- Cat 7, Important
- Cat 9, Essential
- Cat 9, Important
- Dormant
- Unknown



Communications Information

Service	Channel / Location and Comments
NPWS - VHF (Private)	15 - Sites channel with best coverage
NPWS - VHF (Public)	15 - Can be located anywhere
RFS - PMR	80 - Murrumbidgee Region, Gloucester Region, Berri region, Gloucester
RFS - PMR	86 - Hunter Region
RFS - PMR	83 - Parramatta
RFS - PMR	128 - Murrumbidgee Region, Gloucester Region, Berri region, Gloucester
CB - UHF	65 - Available in most RFS vehicles
RFS - GRN	- No service available
Mobile Phone	- Poor coverage

Contact Information

Agency	Position / Location	Phone
NPWS	Regional Day Office	(02) 931 361
	Barrington Tops Area Manager	(0429) 144880
	Upper Hunter Area Manager	(0429) 144873
	Fire Management Officer	(0429) 144876
	Regional Operations Coordinator	(0429) 144870
	Barrington Tops Area Office	(0429) 144872
	Upper Hunter Area Office	(0429) 144870
	Hunter Regional Office	(0429) 144875
		(0429) 144870
		(0429) 144873
Rural Fire Service	Fire Control Centre - Gloucester District	(0429) 144872
	24 Hour Day Office	(0429) 144875
NSW Fire Brigade	Emergency	000
	Newcastle Communications (24 hr)	(0429) 144870
SES	Emergency	000
	Gloucester Unit	(0429) 144870
	Scene Unit	(0429) 144870
Police	Emergency	000
	Gloucester Station	(0429) 144870
Ambulance	Emergency	000
	Bookings	(0429) 144870
Hospital	Gloucester	(0429) 144870
	Scene (Community Health)	(0429) 144870
DOP	Newcastle	(0429) 144870
	Hunter Regional Office	(0429) 144870
State Forests	Hunter Regional Office	(0429) 144870
	Gloucester Shire	(0429) 144870
Council	Gloucester Shire	(0429) 144870
	Scene Shire	(0429) 144870
Defence Dept. Williamtown	RAAF Air Approach Supervisor	(0429) 144870