

Hunter Region Barrington Tops National Park & Surrounding Reserves Fire Management Strategy (Type 2) 2007

Sheet 7 of 8

This strategy should be used in conjunction with aerial photography and field reconnaissance during incidents and the development of incident action plans.

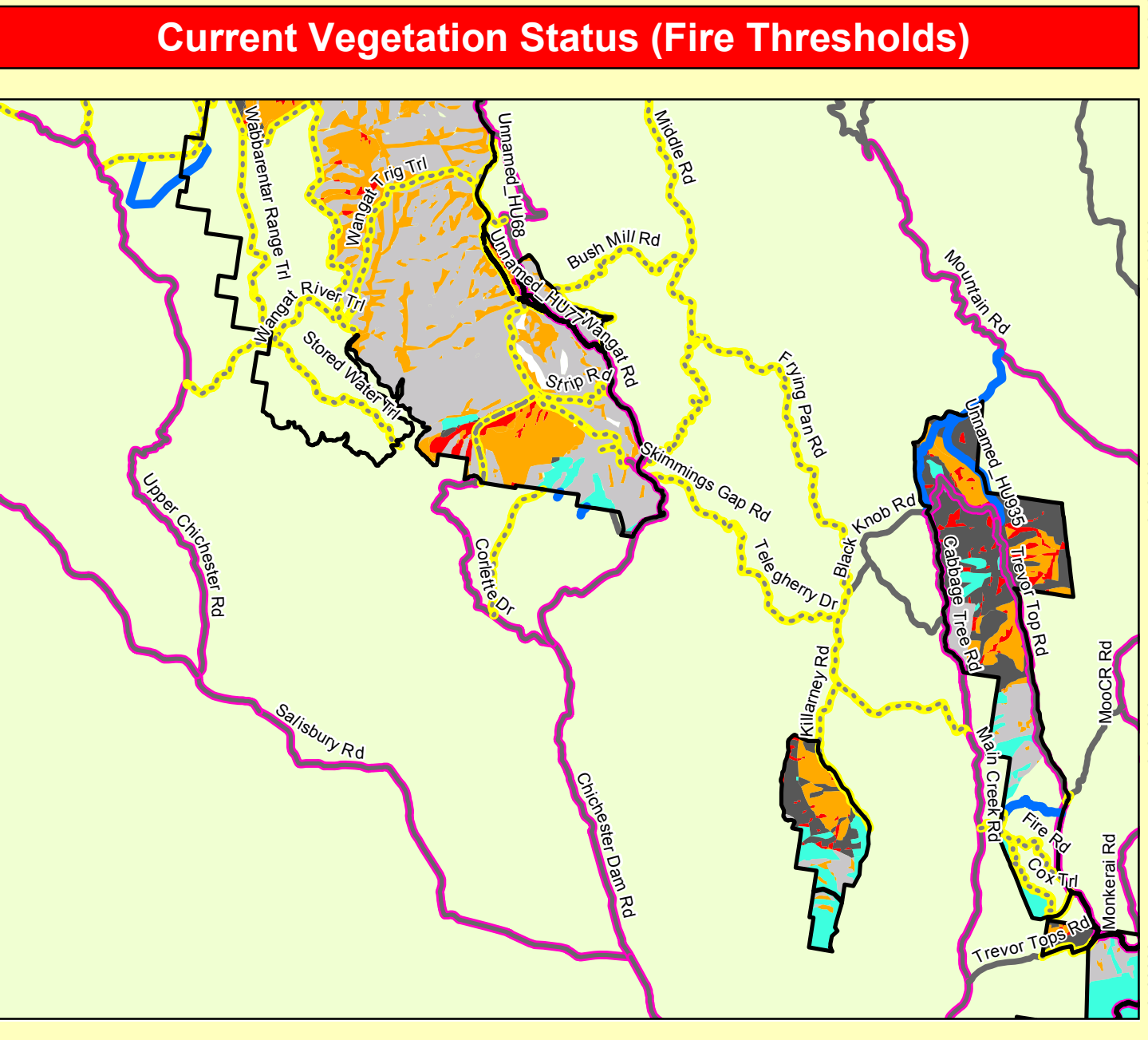
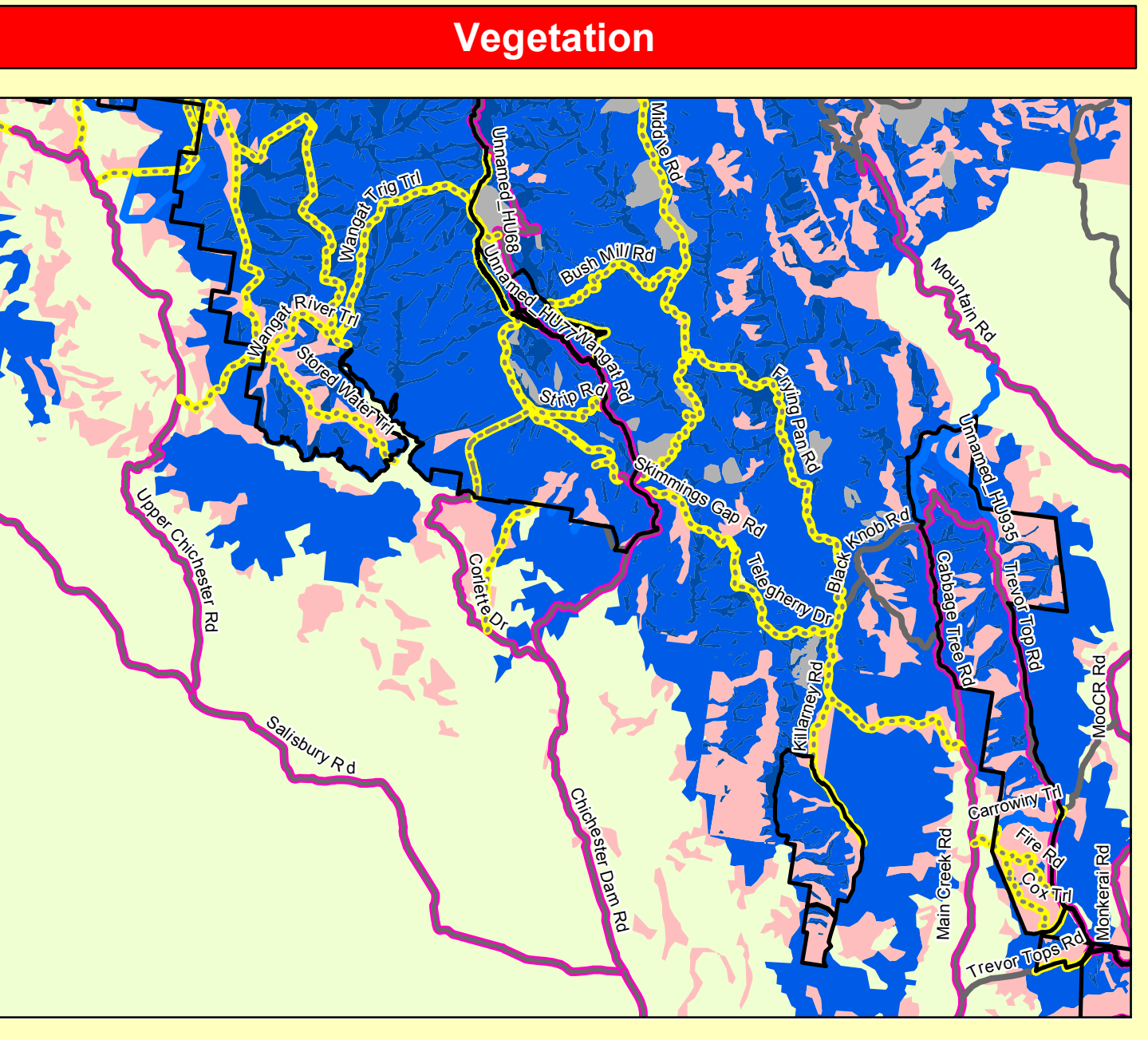
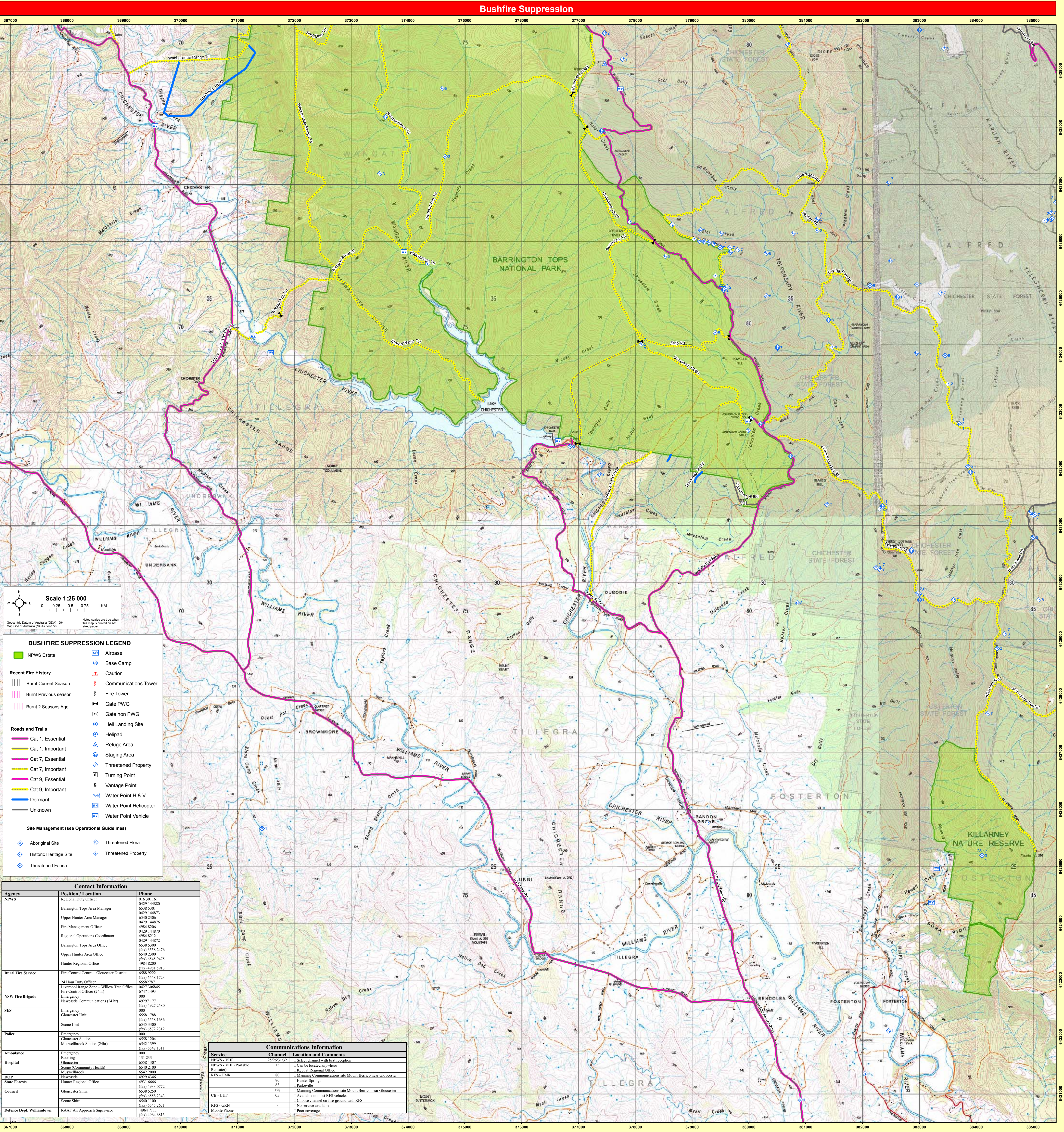
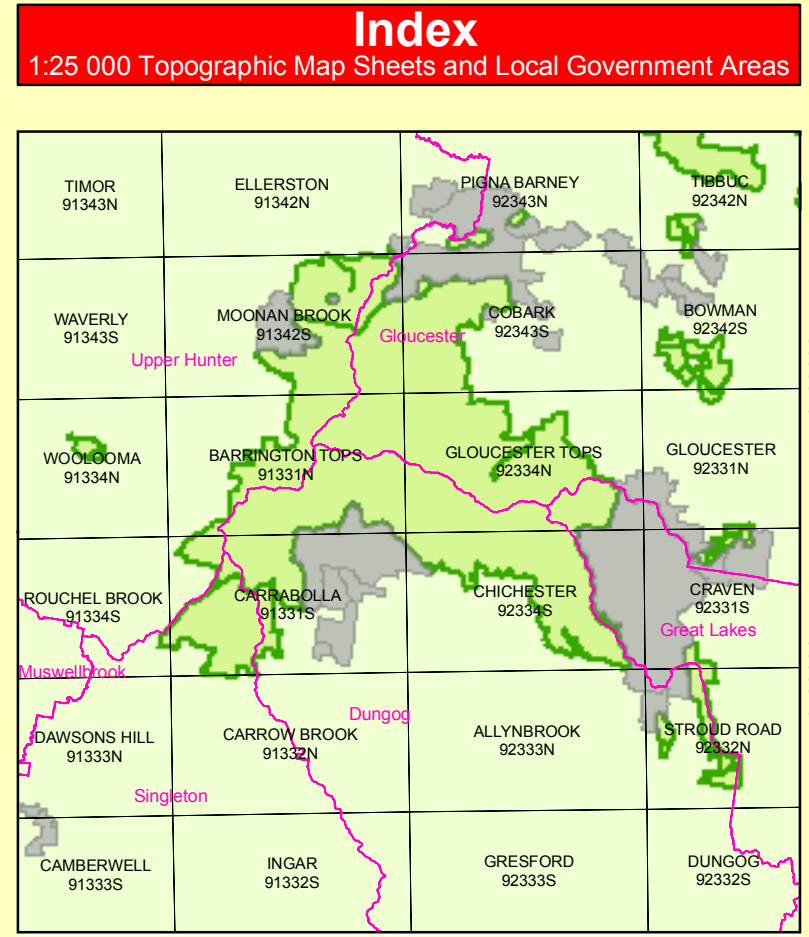
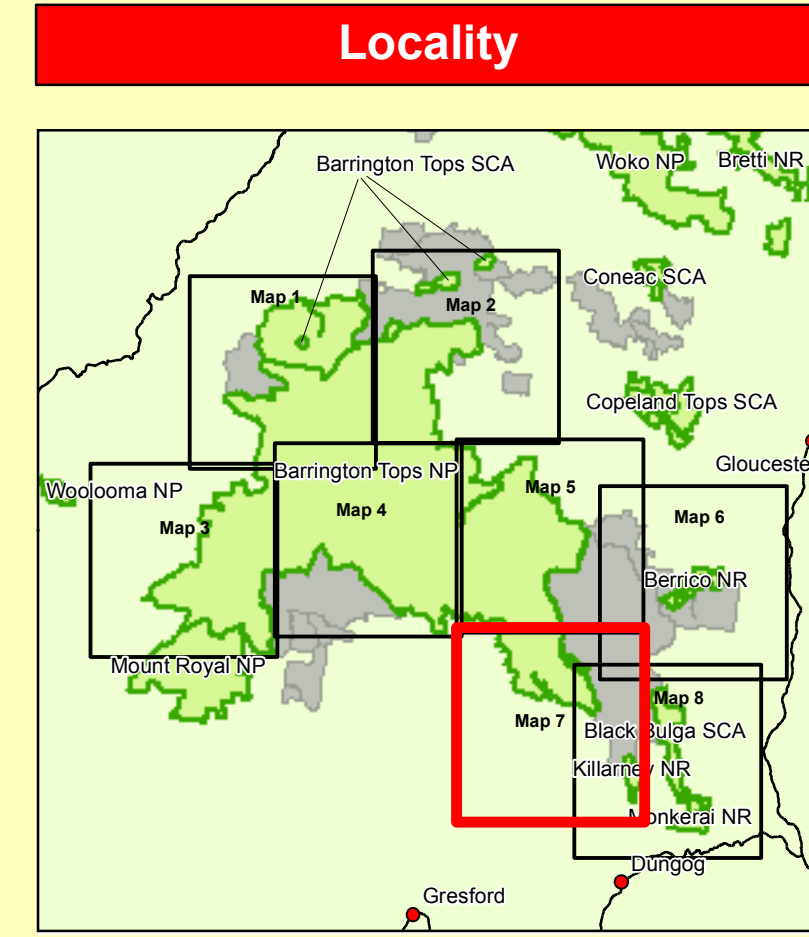
These data are not guaranteed to be free from error or omission. The NSW National Parks and Wildlife Service and its employees disclaim liability for any error or omission in the data and any consequences of such error or omission.

This document is copyright. Apart from any fair dealing for the purpose of study, research criticism or review, as permitted under the copyright Act, no part may be reproduced by any process without written permission.

The NSW National Parks and Wildlife Service is part of the Department of Environment and Climate Change.
Published by the Department of Environment and Climate Change (NSW), June 2006.
Contact: NSW National Parks and Wildlife Service, Hunter Region, Locked Bag 99, Nelson Bay DC NSW 2315.
ISBN: 9 78 1 74122 6591 DEC Number: 2007 / 548 Last Updated: 18/07/11

This strategy is a relevant Plan under Section 38 (4) and Section 44 (D) of Rural Fires Act 1997.

Department of Environment and Climate Change (NSW)
Endorsed by: John O'Gorman Date: 30/ 6/ 2007
Director Northern, Parks & Wildlife Division



VEGETATION LEGEND

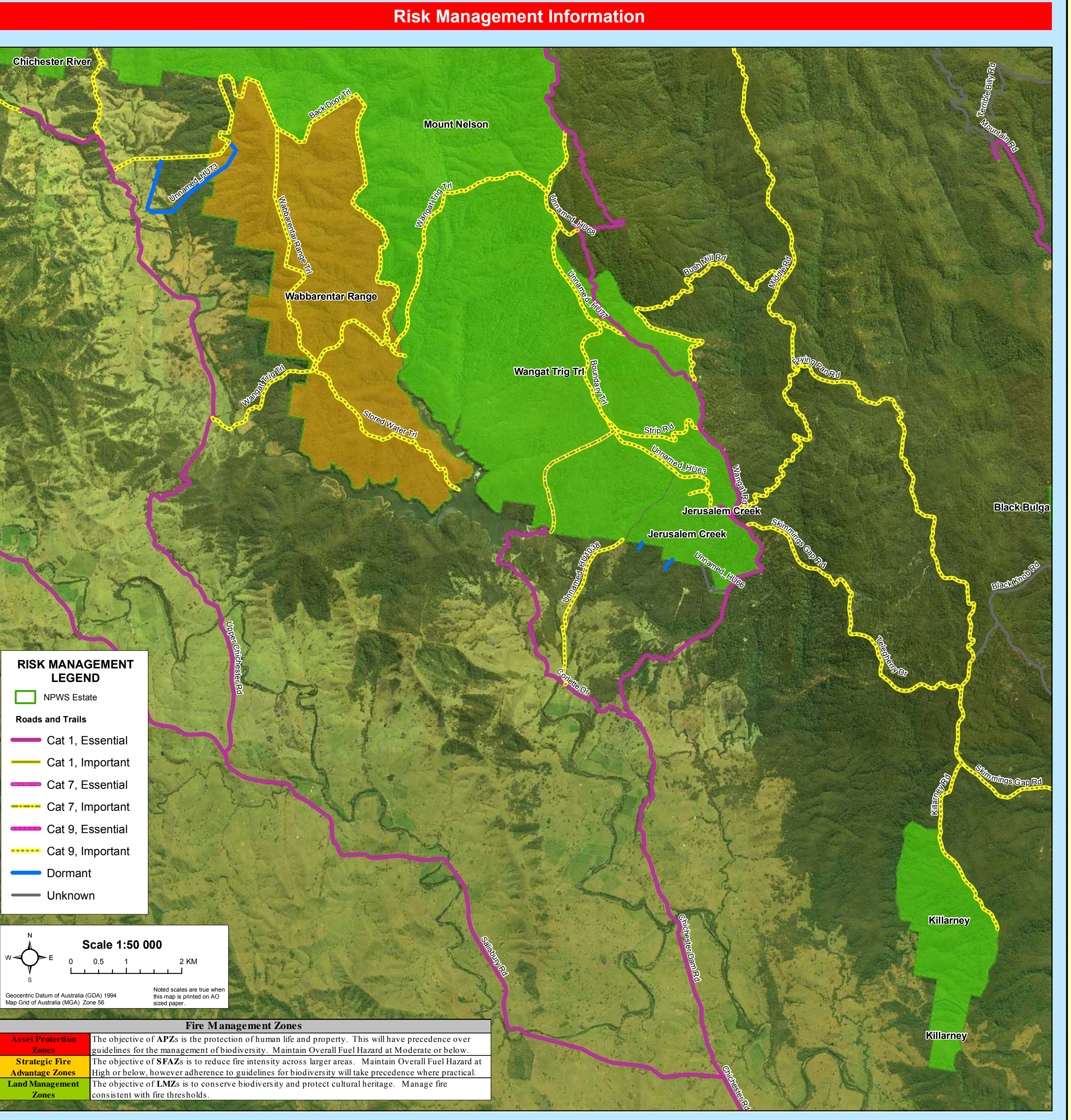
NPWS Estate	Semi-Mesic Grassy Forest	Mangrove/Saltmarsh
Plantation	Native Grassland	Saline Wetland
Introduced	Grassland	Severely Disturbed Vegetation
Artificial Communities	And & Semi-And Shrubland	Endangered Sub-Alpine Wet
Softwood Plantation	Forebush	Sub-Alpine Woodland
Grassy Dry Sclerophyll Forest	Open Forest	Swamp Sclerophyll Forest
Sclerophyll Grassy Woodland	Scrubland/Rushland	Wet Sclerophyll Forest
Healthy Woodland	Serpentine Community	Rainforest
Heathland	Riparian Community	Wet Heath
Endangered Box Open Forest	Wet Heath	Freshwater Wetland
Shrubby Dry Sclerophyll Forest	Freshwater Wetland	

0 1.25 2.5 5 KM

Fire Thresholds

Too Frequently Burnt	Fire thresholds have been exceeded. Protect from fire as far as possible.
Vulnerable to Frequent Fire	The area will be Too Frequently Burnt if it burns this year. Protect from fire as far as possible.
Within Threshold	Fire history is within the threshold for vegetation in this area. A burn is neither required nor should one necessarily be avoided.
Long Unburnt	Fire frequency is below fire thresholds in the area. A prescribed burn may be advantageous. Consider allowing unplanned fires to burn.
Unknown	Insufficient data to determine fire threshold.
No Regime Assigned	Areas which do not have recommended fire intervals assigned to them eg. cleared land, rock.

NB. Fire thresholds are defined for vegetation communities to conserve biodiversity.



RISK MANAGEMENT LEGEND

NPWS Estate
Roads and Trails
Cat 1, Essential
Cat 1, Important
Cat 7, Essential
Cat 7, Important
Cat 9, Essential
Cat 9, Important
Dormant
Unknown

Scale 1:50 000

Geographic Datum of Australia (GDA) 1984
Meters unless otherwise stated
Map of Australia (MGA) Zone 56

Fire Management Zones

Asset Protection Zones The objective of APZs is the protection of human life and property. This will have precedence over objectives for the management of biodiversity. Maintain Overall Fuel Hazard at Moderate or below.

Strategic Fire Advancement Zones The objective of SFAZs is to reduce fire intensity across larger areas. Maintain Overall Fuel Hazard at High or below. However, adherence to conditions for biodiversity will take precedence where practical.

Land Management Zones The objective of LMZs is to conserve biodiversity and protect cultural heritage. Manage fire consistent with fire thresholds.

Scale 1:25 000

0 0.25 0.5 0.75 1 KM

Geographic Datum of Australia (GDA) 1984
Meters unless otherwise stated
Map of Australia (MGA) Zone 56

BUSHFIRE SUPPRESSION LEGEND

NPWS Estate	Airbase
Recent Fire History	Base Camp
Burnt Current Season	Caution
Burnt Previous season	Communications Tower
Burnt 2 Seasons Ago	Fire Tower
Roads and Trails	Gate PWG
Cat 1, Essential	Gate non PWG
Cat 1, Important	Helicopter Landing Site
Cat 7, Essential	Helipad
Cat 7, Important	Refuge Area
Cat 9, Essential	Staging Area
Cat 9, Important	Threatened Property
Dormant	Turning Point
Unknown	Vantage Point
	Water Point H & V
	Water Point Helicopter
	Water Point Vehicle

Site Management (see Operational Guidelines)

Aboriginal Site	Threatened Flora
Historic Heritage Site	Threatened Property
Threatened Fauna	

Contact Information

Agency	Position / Location	Phone
NPWS	Regional Duty Officer	(02) 951 3013
	Barrington Tops Area Manager	(0429) 144880
	Upper Hunter Area Manager	(0429) 144873
	Fire Management Officer	(0429) 144876
	Regional Operations Coordinator	(0429) 144879
	Barrington Tops Area Office	(0429) 144872
	Upper Hunter Area Office	(0429) 144875
Rural Fire Service	Fire Control Centre - Gloucester District	(06) 658 1723
	2nd Rural Fire Office - Willow Tree Office	(06) 658 1745
NSW Fire Brigade	Fire Control Office (24 hr)	(02) 922 2400
	Newcastle Communications (24 hr)	(02) 922 2400
SES	Emergency	000
	Gloucester Unit	0528 1788
	Scene Unit	(0429) 8556 1656
Police	Emergency	000
	Gloucester Station	(0429) 1200
	Marshalltown Station (City)	(0429) 1300
Ambulance	Emergency	(01) 9542 1311
	Bookings	131 233
Hospital	Gloucester	(0429) 2100
	Scene (Community Health)	(0429) 2100
DWP	Newcastle	(02) 929 4346
	Hunter Regional Office	(0429) 144872
Council	Gloucester Shire	(0429) 144872
	Scene Shire	(0429) 144872
Defence Dept. Williams	RAAF Air Approach Supervisor	(0429) 144872
		(0429) 144872

Communications Information

Service	Channel	Location and Comments
NPWS - VHF (Portable)	15	Can be located anywhere
NPWS - VHF (Base)	15	Base of Regional Office
RFS - PMR	80	Maining Communications site Mount Berrico near Gloucester
Hunter Services	80	Parkville
CB - UHF	05	Maining Communications site Mount Berrico near Gloucester
RFS - CRN	80	Choose channel in use ground with RFS
Mobile Phone	-	Poor coverage