

### Hunter Region Barrington Tops National Park & Surrounding Reserves Fire Management Strategy (Type 2) 2007

Sheet 8 of 8

This strategy should be used in conjunction with aerial photography and field reconnaissance during incidents and the development of incident action plans.

These data are not guaranteed to be free from error or omission. The NSW National Parks and Wildlife Service employees disclaim liability for any and all errors or omissions in the data and any consequences of such errors or omissions.

This document is copyright. Apart from any fair dealing for the purpose of study, research, criticism or review, as permitted under the copyright Act, no part may be reproduced by any process without written permission.

The NSW National Parks and Wildlife Service is part of the Department of Environment and Climate Change. Published by the Department of Environment and Climate Change (NSW), June 2006.

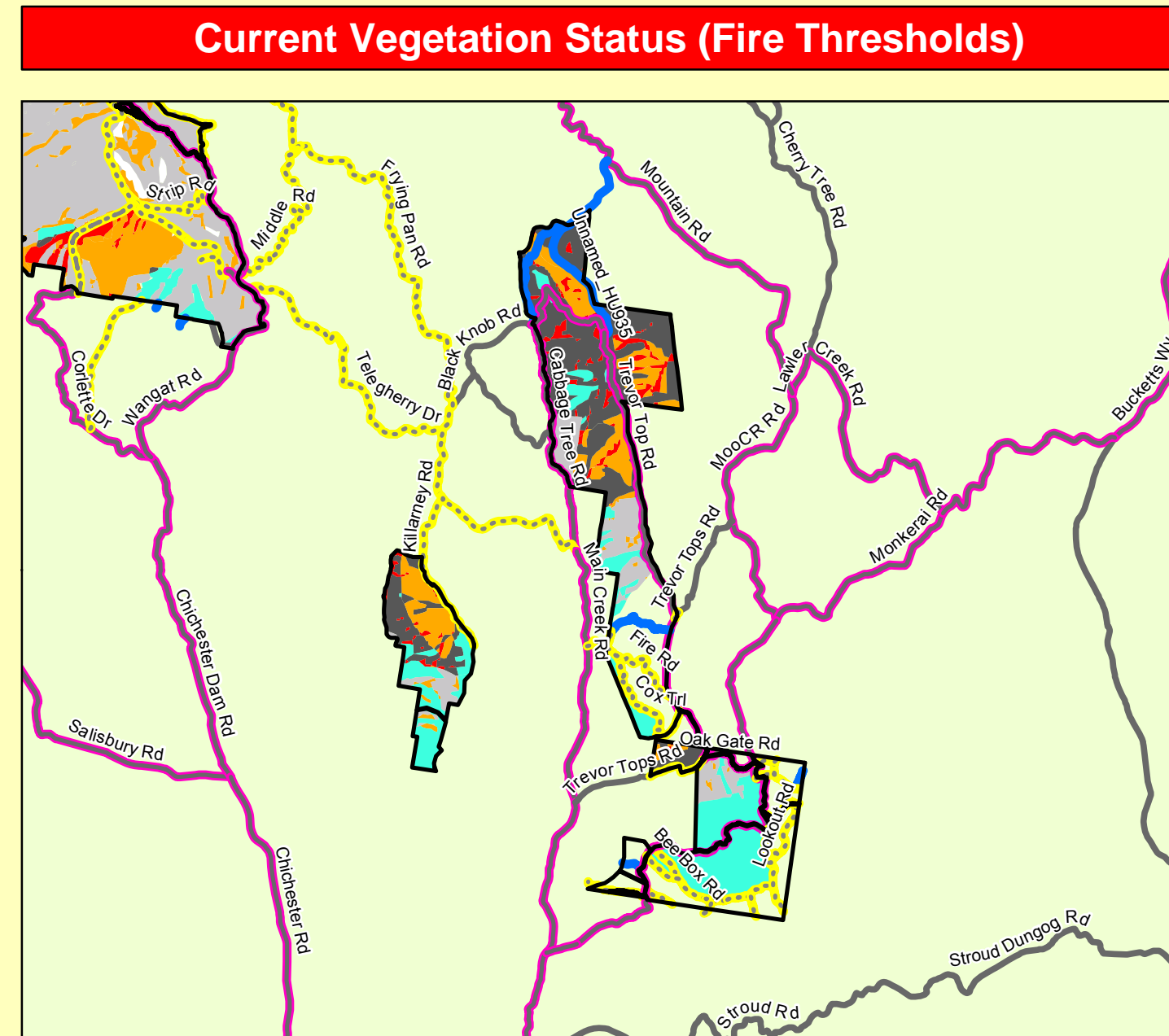
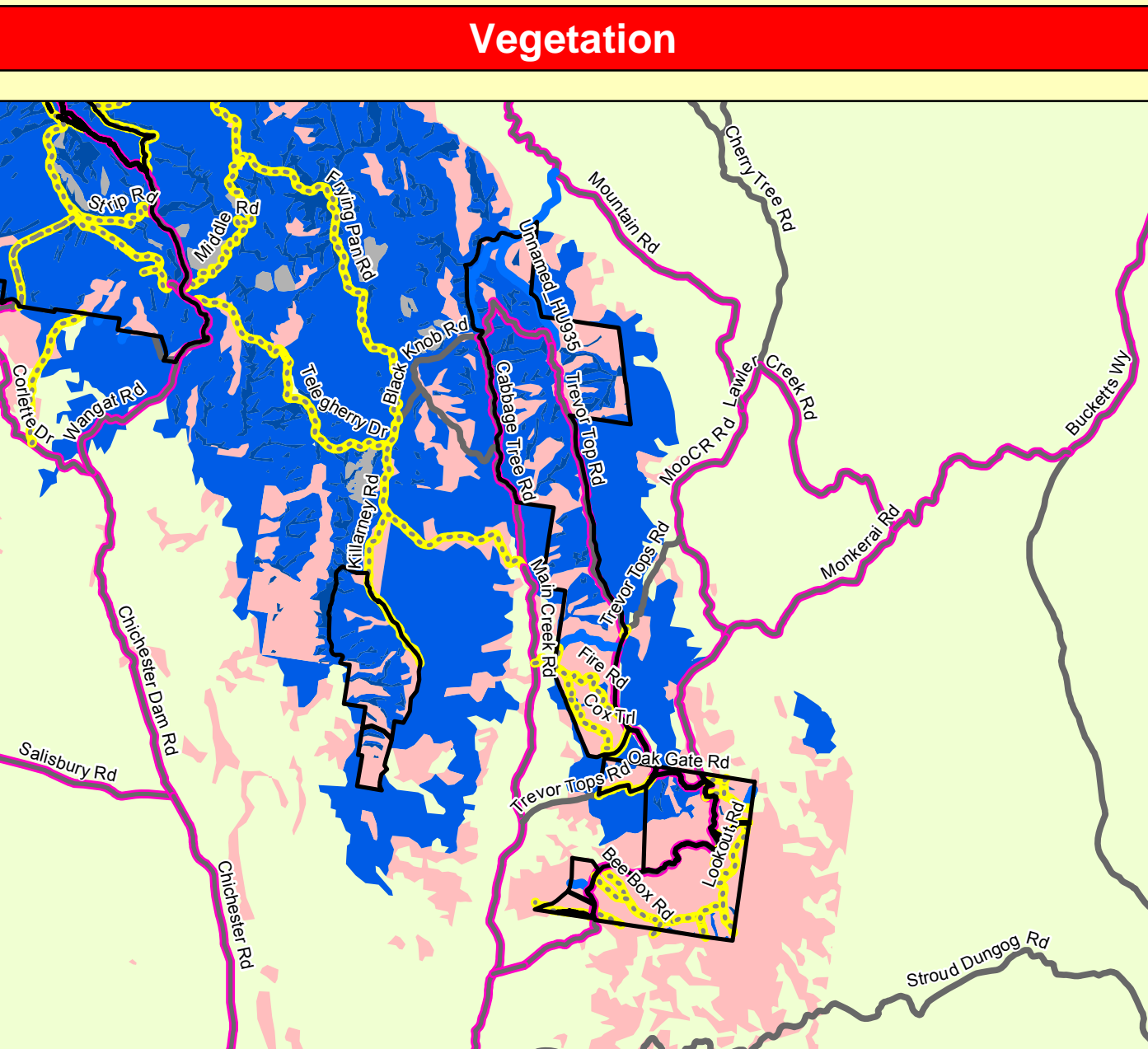
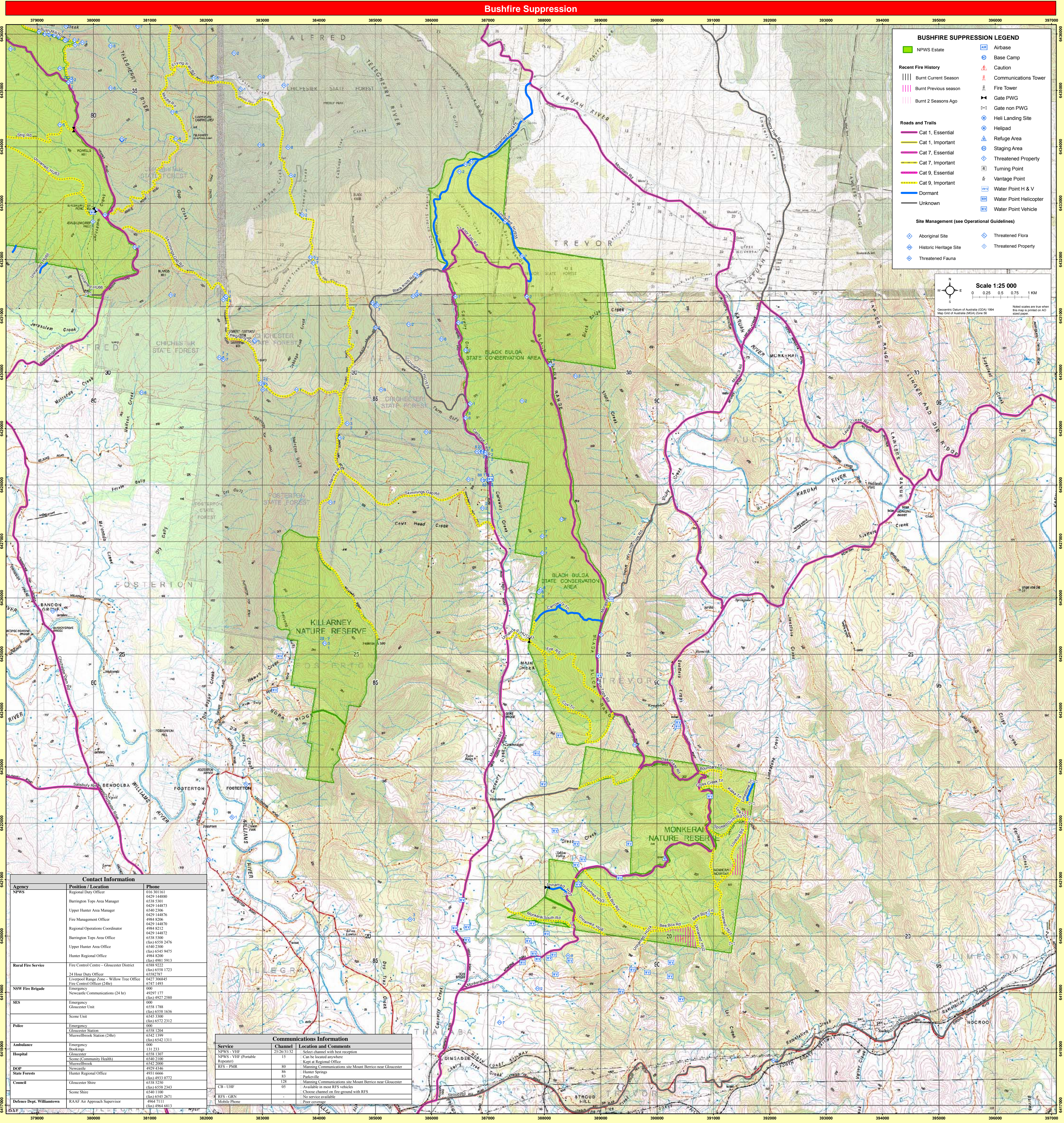
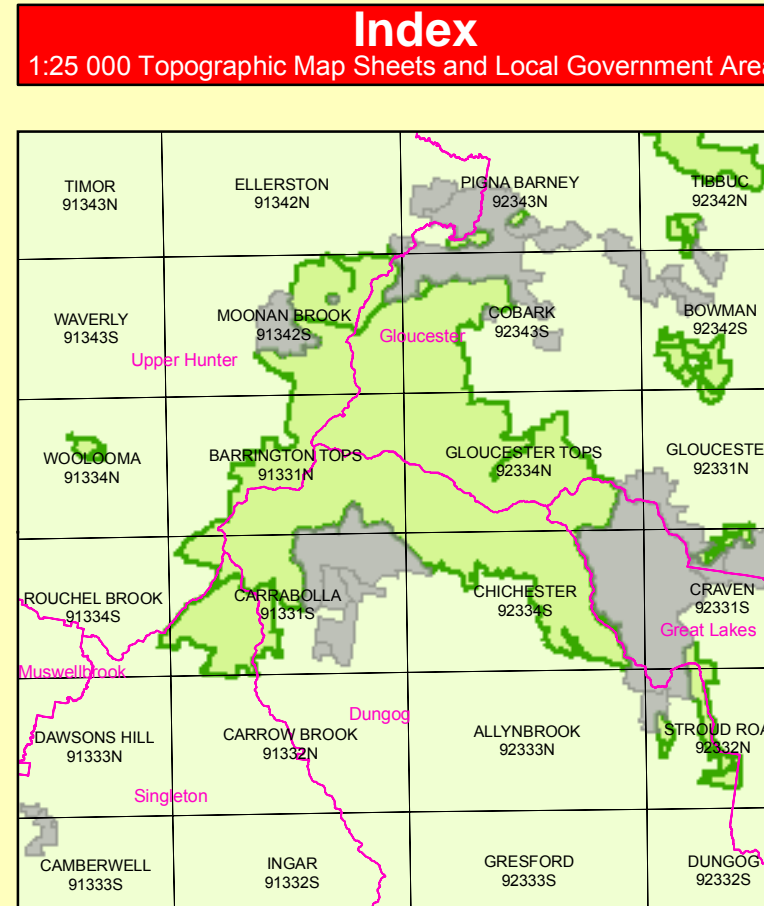
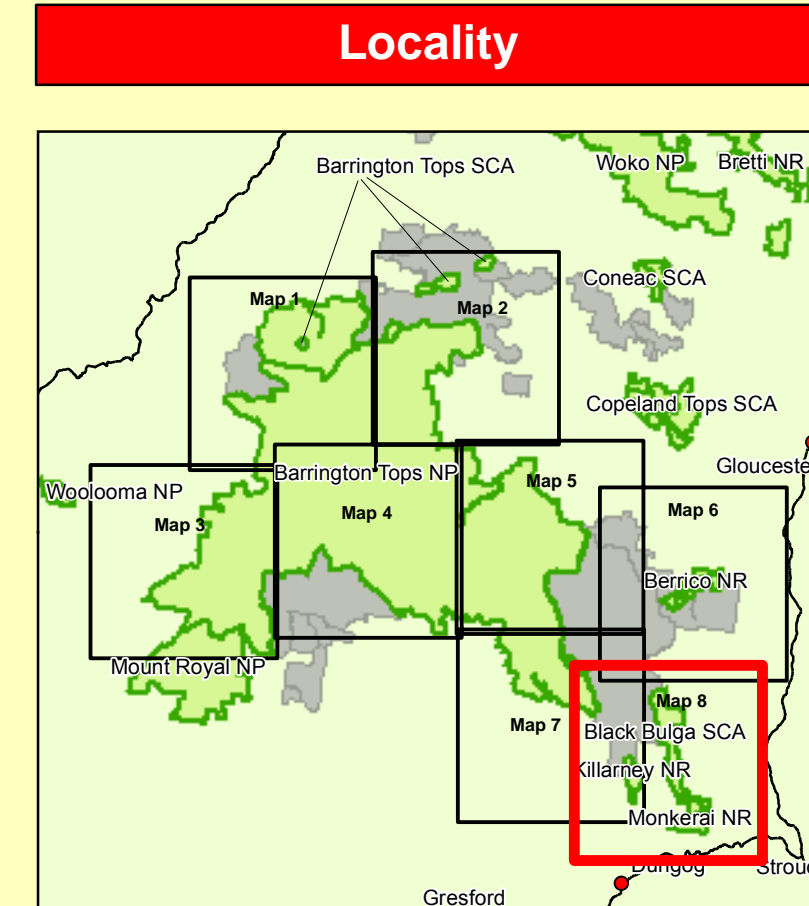
Contact: NSW National Parks and Wildlife Service, Hunter Region, Locked Bag 99, Nelson Bay DC NSW 2315.

ISBN: 9 78 1 74122 6591 DEC Number: 2007 / 548 Last Updated: 18/07/11

This strategy is a relevant Plan under Section 38 (4) and Section 44 (c) of Rural Fires Act 1997.

Endorsed by: John O Gorman Date: 30/ 6/ 2007

Director, Northern, Parks & Wildlife Division



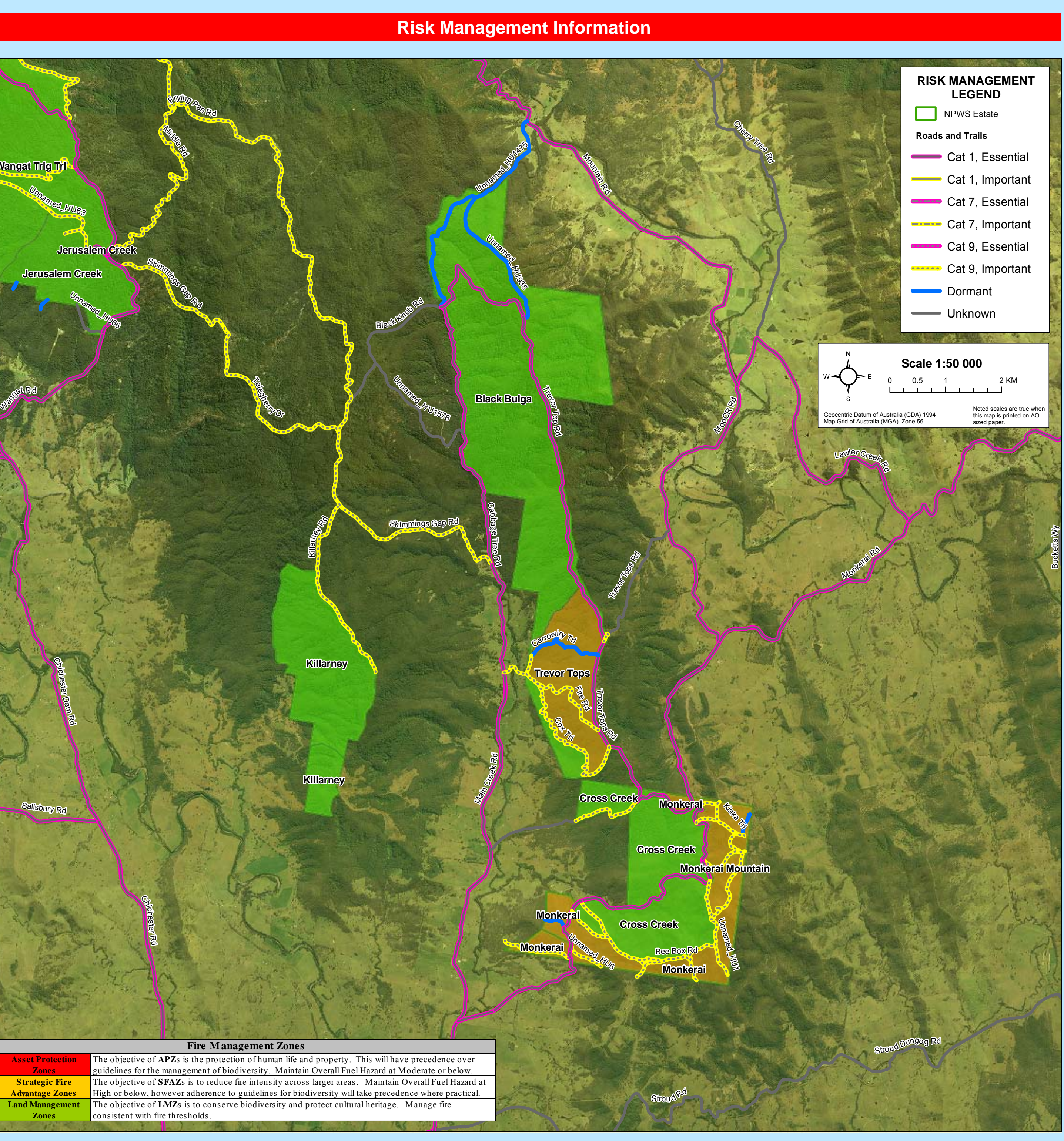
#### VEGETATION LEGEND

NPWS Estate	Semi-Mesic Grassy Forest	Mangrove/Saltmarsh
Plantation	Native Grassland	Saline Wetland
Introduced	Grassland	Severely Disturbed Vegetation
Artificial Communities	And & Semi-And Shrubland	Endangered Sub-Alpine Wet
Softwood Plantation	Forebush	Endangered Snow Snow Grass
Grassy Dry Sclerophyll Forest	Palm Forest	Sub-Alpine Woodland
Sclerophyll Grassy Woodland	Sedge/land/Rushland	Swamp Sclerophyll Forest
Healthy Woodland	Serpentine Community	Wet Sclerophyll Forest
Heathland	Riparian Community	Rainforest
Endangered Box Open Forest	Wet Heath	Unknown
Shrubby Dry Sclerophyll Forest	Freshwater Wetland	

#### Fire Thresholds

<b>Too Frequently Burnt</b>	Fire thresholds have been exceeded. Protect from fire as far as possible.
<b>Vulnerable to Frequent Fire</b>	The area will be Too Frequently Burnt if it burns this year. Protect from fire as far as possible.
<b>Within Threshold</b>	Fire history is within the threshold for vegetation in this area. A burn is neither required nor should one necessarily be avoided.
<b>Long Unburnt</b>	Fire frequency is below fire thresholds in the area. A prescribed burn may be advantageous. Consider allowing unplanned fires to burn.
<b>Unknown</b>	Insufficient data to determine fire threshold.
<b>No Regime Assigned</b>	Areas which do not have recommended fire intervals assigned to them eg. cleared land, rock.

NS. Fire thresholds are defined for vegetation communities to conserve biodiversity.



#### Contact Information

Agency	Position / Location	Phone
NPWS	Regional Area Office	016 901 811
	Barrington Tops Area Manager	0429 144880
	Upper Hunter Area Manager	0429 144873
	Fire Management Officer	0429 144876
	Regional Operations Coordinator	0429 144879
	Barrington Tops Area Office	0429 144872
Rural Fire Service	Fire Control Centre - Gloucester District	0658 9222
	24 Hour Duty Office	(0658 9222)
	Lindsay Region Area - Willow Tree Office	0625 26787
NSW Fire Brigade	Fire Control Office (24hr)	0627 1495
	Newcastle Communications (24 hr)	4920 177
SES	Emergency	0658 9222 2400
	Gloucester Unit	0658 1788
	Scene Unit	(0658) 6556 1656
Police	Emergency	0658 9222 2400
	Gloucester Station	0658 1788
	Manildra/Bevan Station (City)	0658 1788
Ambulance	Emergency	(0658) 4542 1311
	Bookings	0658 1788
Hospital	Gloucester	0658 2100
	Scene (Community Health)	0658 2100
DWP	Newcastle	4929 4346
	Hunter Regional Office	4911 6669/0772
Council	Gloucester Shire	0658 2526
	Some Shire	0658 1100
Defence Dept. Williamtown	RAAF Air Approach Supervisor	4962 7111
		0658 9441811

#### Communications Information

Service	Channel	Location and Comments
NPWS - VHF	25.200/12.2	Select channel and best reception
NPWS - VHF (Portable)	15	Can be located anywhere
Repeater	80	Just at Regional Office
RIS - PMR	80	Mounting Communications site Mount Berrico near Gloucester
Hunter Services	80	Parkville
CB - UHF	05	Mounting Communications site Mount Berrico near Gloucester
RIS - GRS	80	Available in most RFS vehicles
Mobile Phone	80	Choose channel on fire-ground with RIS
		No service available
		Post coverage