



Cane Toad control

Using the Super Trap

The Super Trap is a self sufficient Cane Toad catching unit that can be used along with other methods to control the spread of Cane Toads. The super trap can be used in a semi permanent situation and requires only a minimal amount of monitoring.

The Super Trap

When set up with adequate water and all parts functioning correctly, the Super Trap can house captured toads humanely for an extended period of time.



An example of a Super trap

Components

- 25 gauge x 25mm x 25mm holes galvanised wire mesh.
 - 20watt solar panel*
 - 12volt battery
 - Black UV lights
 - Solar panel charge controller MP3128*
 - Trough with float valve
 - Drum for water
 - One way perspex finger gates**
- * available from Jaycar Electronics
**available from www.frogwatch.org.au



Door showing finger gates manufactured by Frogwatch, Northern Territory

Construction

1. Make a wire cage 1200mm x 1000mm x 500mm.
2. Measure the trap in half.
3. Cut holes in proposed section, large enough to be able to remove toads.
4. Cut an access hole in the proposed rear section, large enough to be able to remove toads.
5. Make a divider and fix it to the roof of the trap ensuring it sits 50-100mm from the trap floor.
6. Attach a light to this divider.
7. Place a water trough and drum in the rear of the cage.
8. Secure solar panel.
9. Insulate rear enclosed section with insulation.
10. Cover top of trap.
11. Super trap is now ready for use.

How does the trap work?

During the day the lights are off, at nightfall the solar panel controller turns the lights on. These will remain on until the solar panel detects light, the lights are then switched off, and the charging of the battery is continued.

When the lights are on they attract insects, the insects in turn attract the toads. The toads push on the one way finger gates to enter the trap to feed on the insects and become captured. During their stay in the trap they feed at their own will at night and seek shelter and water from the trough during the day.



UV black lights available from electronics outlets



Where should the trap be placed?

Choosing the right location is critical to the success of the trap. The trap should be located near a water body or in an area where toads have been seen on consecutive nights. It is extremely important that the trap is not located near a competing light source.

Setting up the Super Trap up

Initial setup of the trap should be done using the following steps:

1. Place Trap on the ground and secure if required by a chain and lock to a tree/post or something sturdy to prevent theft.
2. Water drum inside the trap should be filled with clean water, check that float valve is functioning correctly and that there are no leaks.
3. Some small logs and rocks should be placed inside the holding room (enclosed) part of the trap for captured animals to shelter during the day.
4. It is recommended that an observation be made at night to check that the trap is functioning.



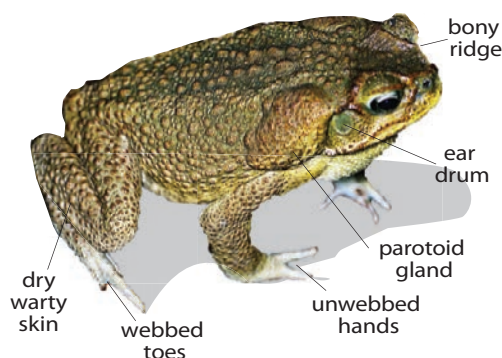
Trough and float valve supply water to captured toads

Monitoring

The Super Trap should be checked once a week for cane toads throughout the season from October to March. Trap should be functional throughout this period.

If native frogs are caught be careful to handle them with gloves on and release them in the local area. If repeated non-target animals are caught a different trap location should be chosen.

Cane toad



Toad captured, now what?

Once captured toads should be removed for humane euthanasia.

Toad carcasses can be disposed of by burial in a garden; ensuring that the depth is sufficient so native and domestic animals don't dig up the carcasses. Alternatively they can be placed in a lidded compost or garbage bin.



Cane toad caught in a super trap at Mebbin NP during a trial.

Material suppliers

- Mesh, see your local rural merchandiser
- All electronics available from outlets such as Jaycar electronics
- The one way, frog friendly perspex finger gates are available from Frogwatch NT, www.frogwatch.org.au

For further information contact

Pest Management Officer
NPWS Northern Rivers Region
PO Box 856, Alstonville, NSW 2477
Phone: 66270200.
Email: northernrivers.region@environment.nsw.gov.au