

Conservation Action Plan

Senecio linearifolius var. dangarensis

This plan has been prepared in accordance with the requirements of s.78C of the National Parks and Wildlife Regulation 2019 (Reg.) in relation to an Asset of Intergenerational Significance (AIS) as declared under s.153G of the *National Parks and Wildlife Act 1974*.

Site details

AIS site	AIS-E0-002, AIS-E0-076
Site location	An area of 1050 hectares in Goulburn River National Park An area of 526 hectares in Wollemi National Park
NPWS contact	Manager, Mudgee Area, Blue Mountains Branch

Environmental values

This table sets out the environmental values for which the land was listed as an AIS (Reg. 78C(3)(a)).

Identified value(s)	Value description
Important habitat for <i>Senecio linearifolius var. dangarensis</i>	<i>Senecio linearifolius var. dangarensis</i> is an endangered, aromatic, perennial blue-green shrub up to two metres high. Yellow flowers appear in corymbose clusters. It grows on open scree slopes and in woodland communities on basalt and is restricted to only two known populations.

Key risks to environmental values

This table sets out the key risks to the environmental values of the land (Reg. 78C(3)(b)).

Key risk(s)	Description
Inappropriate fire regimes	Inappropriate fire frequency and intensity may lead to a decline or extinction of <i>Senecio linearifolius var. dangarensis</i> at the sites. This risk is exacerbated by the poor understanding of impacts of fire and appropriate fire regimes.
Weeds	Habitat degradation and competition through invasion, establishment, intensification and spread of weeds to the extent that recruitment or establishment of plants is impaired.
Feral herbivores	Damage to individual plants and degradation of <i>Senecio linearifolius var. dangarensis</i> habitat by introduced herbivores (e.g. feral goats) through grazing and trampling.
Anthropogenic climate change	Changes to rainfall patterns as a result of anthropogenic climate change that increases the frequency and severity of drought conditions may exceed the species adaptive capacity and reduce survivorship of individuals. This risk is exacerbated by the restricted distribution of this species.

Conservation activities

This table sets out the conservation activities required to:

1. Control, abate or mitigate the key risks and
2. maintain, restore and remediate the environmental values of the land (Reg. 78C(3)(c)).

Key risk(s)	Impacted site(s)	Conservation activities
Inappropriate fire regimes	All sites	<ul style="list-style-type: none"> • Develop guidance on the appropriate fire management for the habitat of the <i>Senecio linearifolius</i> var. <i>dangarensis</i> within 12 months of adoption of this plan and update as required. This guidance must provide for: <ul style="list-style-type: none"> - maintenance of an appropriate fire regime by developing and implementing a site-specific burn plan for the declared areas - implementation of any required fire protection and response measures in the declared areas - integration of site-specific requirements into NPWS and NSW Government bushfire planning, risk management and operational response arrangements. • Implement fire management consistent with the guidance.
Weeds	All sites	<ul style="list-style-type: none"> • Remove weed species to the extent required to ensure weeds do not have a negative impact on <i>Senecio linearifolius</i> var. <i>dangarensis</i>, by targeted application of physical and chemical weed control or other targeted control methods.
Feral herbivores	All sites	<ul style="list-style-type: none"> • To the extent practicable, reduce feral herbivore densities to levels that are not having an ecologically significant impact on <i>Senecio linearifolius</i> var. <i>dangarensis</i>, and maintain densities at or below these levels, by trapping, baiting and shooting.
All risks	All sites	<ul style="list-style-type: none"> • If required, establish ex-situ seedbank or living collection from a genetically representative sample of the population. • If required, augment the existing population or establish a new population with ex-situ material.

Other land management activities

Within the declared land there are existing assets and infrastructure of NPWS and other external service providers, including public utilities.

Maintenance operations (including inspection, emergency works and routine and standard maintenance) that are exempt development in accordance with the *Environmental Planning and Assessment Act 1979*, and which are performed on and around existing assets and infrastructure, are authorised under this conservation action plan (CAP) provided such operations are taken in a manner that aims to minimise the risk to the declared environmental values of the land and with any other required consents or approvals.

All maintenance operations on the declared land are to be undertaken in accordance with this CAP.

Measuring and reporting

This table sets out the requirements for measuring and reporting on health and condition (Reg. 78C(3)(d)).

Attribute	Metric	Method
Health and condition of the <i>Senecio linearifolius</i> var. <i>dangarensis</i> population	Population estimate	Design, and implement every three to five years, monitoring to generate an estimate of the number of mature plants and seedlings of <i>Senecio linearifolius</i> var. <i>dangarensis</i> in the population.

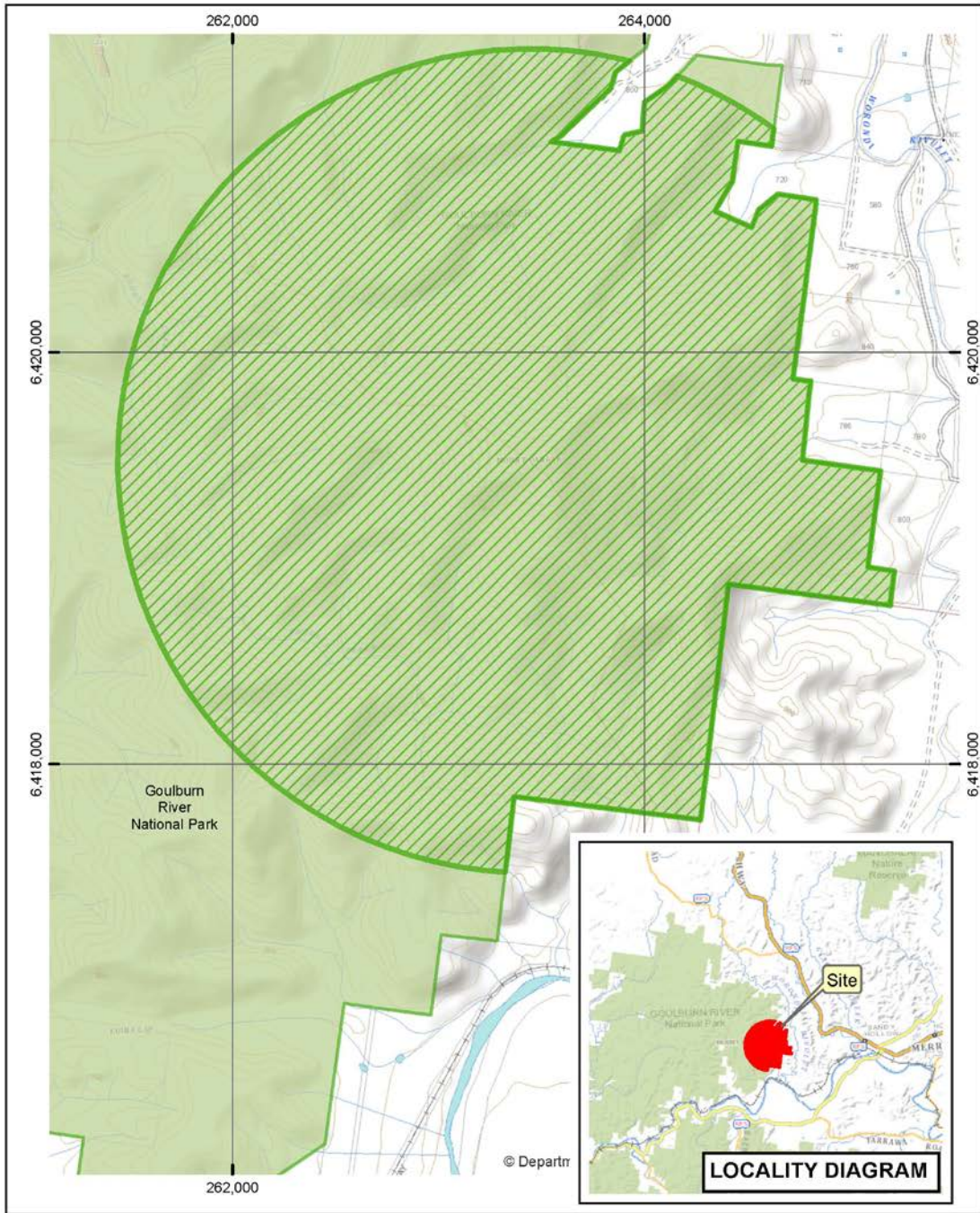
A report on the health and condition of the value for which this AIS was declared will be prepared and published on the Department of Planning and Environment website: www.environment.nsw.gov.au. The report will summarise the baseline and current health and condition of the values of the declared land and its overall trajectory.

Evaluation of conservation action plans



This CAP will be amended or replaced as new information becomes available that helps improve our management of the identified assets (Reg. 78H).

The Secretary must appoint a scientist, or a panel of scientists, to conduct a review, as soon as possible after the period of five years from the first approval of a CAP, to examine whether CAPs have been effectively implemented (Reg. 78J(1)).

Senecio linearifolius var. *dangarensis*
Conservation Action Plan





Legend

-  Declared Land
-  NPWS Estate

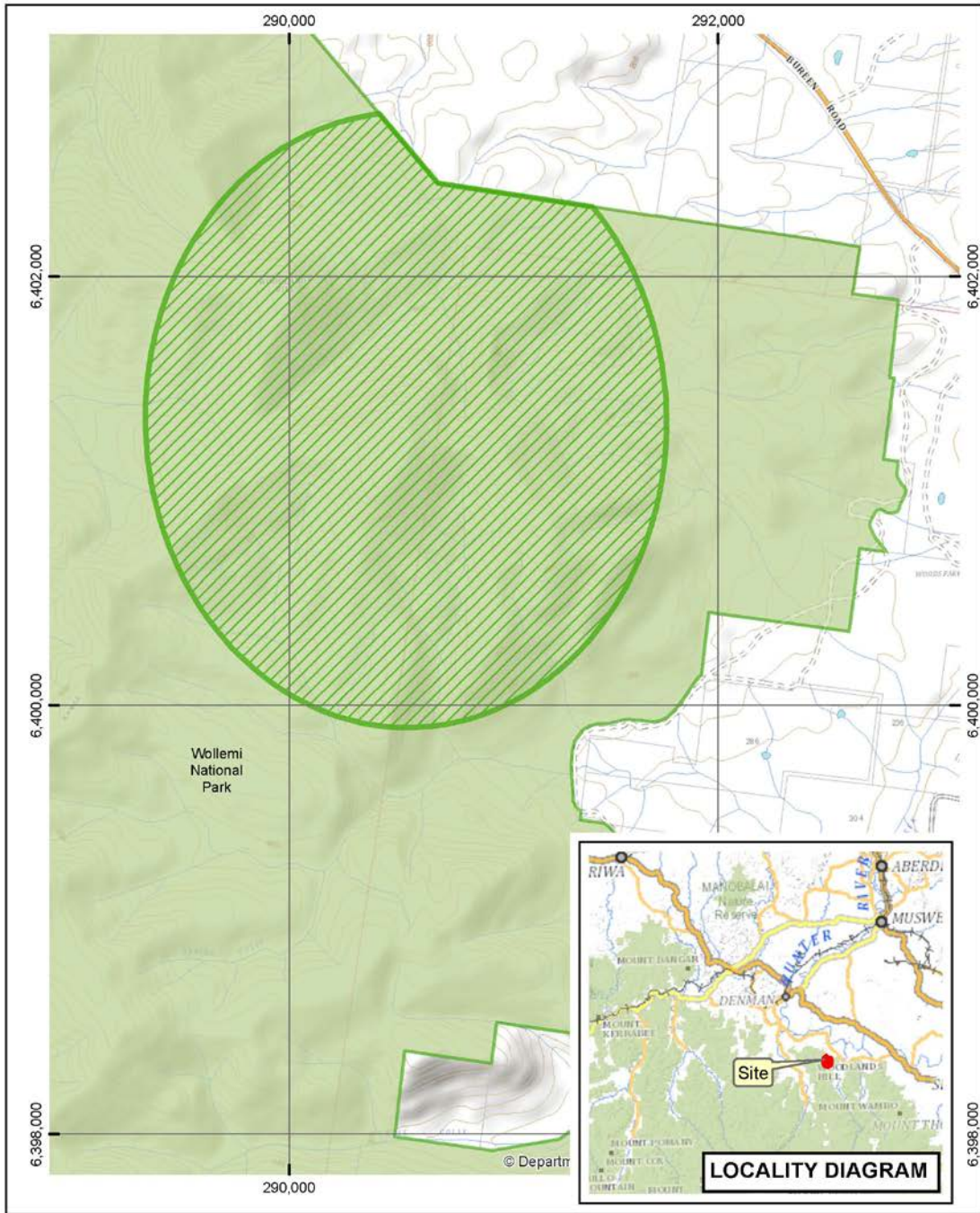
AIS-E0-002
Asset of
Intergenerational Significance
Senecio linearifolius
var. *dangarensis*
Goulburn River National Park

Copyright of Department of Planning Industry and Environment.
This map is not guaranteed to be free from error or omission. The Department and its employees disclaim liability for any use over the information in this map and any consequences of such acts or omissions.



N 0 0.25 0.5 0.75 km

Senecio linearifolius var. *dangarensis*
Conservation Action Plan





Legend

-  Declared Land
-  NPWS Estate

AIS-E0-076
Asset of Intergenerational Significance
Senecio linearifolius* var. *dangarensis
Wollemi National Park

Copyright of Department of Planning Industry and Environment.
This map is not guaranteed to be free from error or omission. The Department and its employees disclaim liability for any loss or damage arising from the information in this map and any consequences of such acts or omissions.

N
0 0.25 0.5 0.75 km

Senecio linearifolius var. *dangarensis*
Conservation Action Plan

Date prepared	July 2022
Date approved	25 July 2022
Approved by	Atticus Fleming, Acting Coordinator General, Environment and Heritage
Due for review	July 2027

Environment and Heritage, Department of Planning and Environment,
Locked Bag 5022, Parramatta NSW 2124
Phone: 1300 361 967; email: info@environment.nsw.gov.au; www.environment.nsw.gov.au
ISBN 978-1-76058-592-1; EHG 2022/0389; August 2022.