

REPORT PREPARED BY ARCHAEOLOGIST MICHAEL JACKSON

# **An Archaeological Survey of Bantry Bay Mountain Bike Track Realignment**

---

**28/05/2013**

This report consists of the results of an Archaeological field survey for the Bantry Bay Mountain Bike track realignment. The report outlines survey coverage, site locations and descriptions, potential threats to site integrity in relation to the proposed track, site significance assessment, management and mitigation measures and recommendations.

## Document Information

<b>Project Name</b>	<b>Bantry Bay Mountain Bike Track Realignment</b>
<b>Project Number</b>	<b>0028</b>
<b>Status</b>	<b>Final</b>
<b>Client Name</b>	<b>Epacris Environmental Consultants Pty Ltd</b>
<b>Recipient</b>	<b>Richard Delaney - Director</b>
<b>Issue Date</b>	<b>28/05/2013</b>

### DISCLAIMER

This report was prepared by Epacris Environmental Consultants in good faith exercising all due care and attention, but no representation or warranty, express or implied, is made as to the relevance, accuracy, completeness or fitness for purpose of this document in respect of any particular user's circumstances. Users of this document should satisfy themselves concerning its application to, and where necessary seek expert advice in respect of, their situation. The views expressed within are not necessarily the views of the Office of Environment and Heritage (OEH) and may not represent OEH policy.

# BANTRY BAY/GARIGAL NATIONAL PARK MOUNTAIN BIKE TRACK REALIGNMENT

## Survey 5

Archaeological survey for the mountain bike (MTB) track realignment at Garigal National Park (GNP) near Bantry Bay was conducted on 16/05/2013 ('current survey'). Sections of new MTB track alignment were surveyed south-east of the Curry Street Trail and west of the Engravings Trail (Figure 1). Three Aboriginal sites and one potential archaeological deposit were recorded. Survey coverage and site descriptions (Table 1) are outlined below.

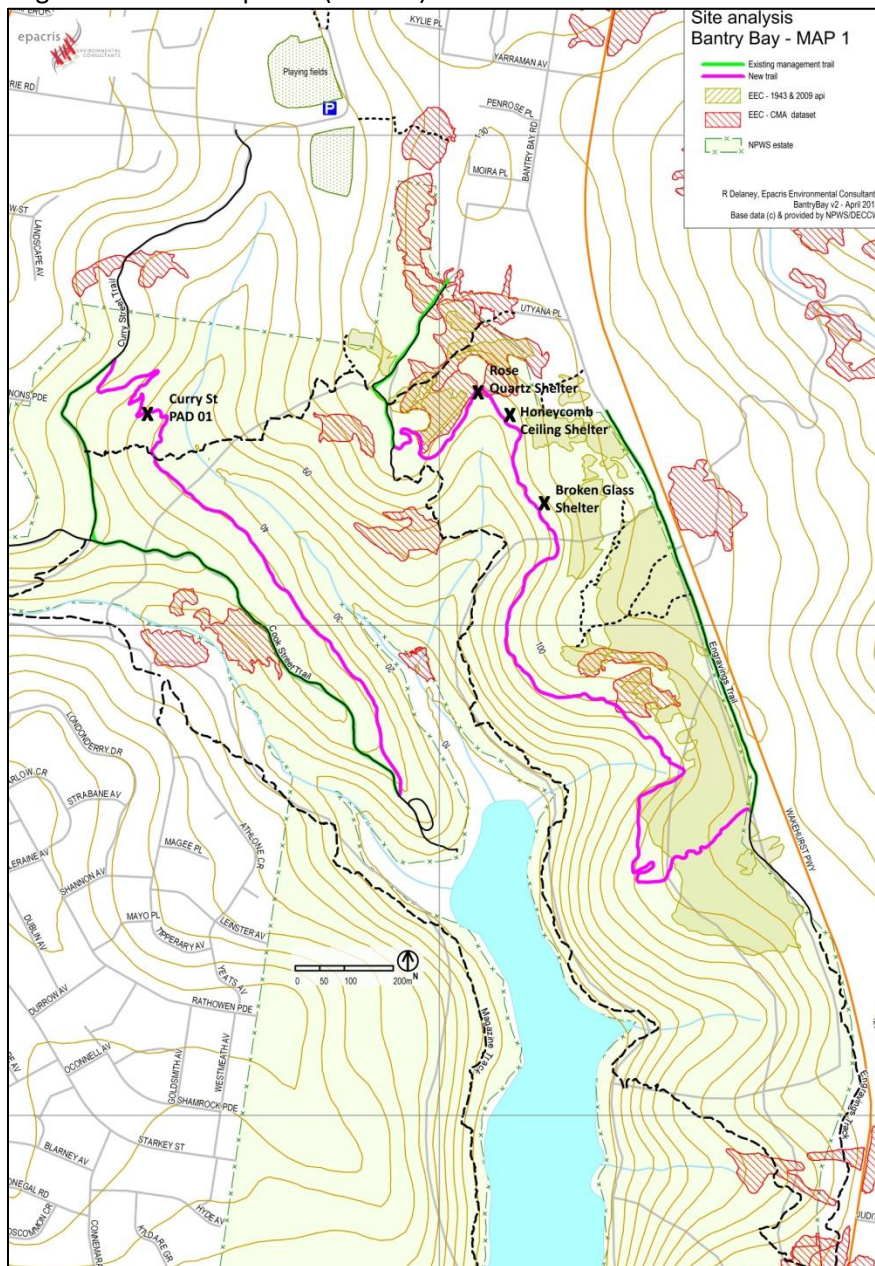


Figure 1: New track routes and site locations for Bantry Bay MTB track

Site Name	Site Type
Curry Street PAD 01	Potential Archaeological Deposit
Rose Quartz Shelter	Occupation Shelter
Honeycomb Ceiling Shelter	Occupation Shelter
Broken Glass Shelter	Occupation Shelter

**Table 1:** Sites recorded during current survey

### North-West Survey – Curry Street Trail Section

The new MTB track alignment runs south-east from Curry Street Trail approximately 150m south of GNP boundary. The alignment traverses the mid-lower slope of a broad spur west of an unnamed tributary of Bantry Bay. A 10m wide corridor was surveyed along the 600m alignment. The spur has occasional rock outcrops and minor cliff-lines with thick, intact dry sclerophyll forest. Occasional wet areas dominated by Coral Fern (*Gleichenia dicarpa*) and Sword Grass (*Gahnia grandis*) were encountered.

Visibility and exposure within the area is low, largely limited to occasional rock platforms and minor rock shelters. As a result, effective survey coverage of the alignment was assessed at just over 1% (Table 2).

Survey Unit	Landform	Survey Unit Area (sq. m)	Visibility %	Exposure %	Effective coverage area (sq. m)	Effective coverage %
Area : New Alignment West	Mid-lower slope	6000	<10	10	60	1

**Table 2:** Survey 5 coverage Curry Street Trail section

### Curry Street PAD 01

One site was located in the area - 'Curry Street PAD 01' - consisting of a small shelter with potential archaeological deposit (PAD) (Figure 1; Plates 1-2). The shelter is 8m long x 1.4m deep x 1.8m tall and faces east. The shelter has a loose, sandy surface deposit with occasional charcoal fragments, possibly hearth related. No artefacts were located at the site. The new MTB track alignment will be positioned within 1-2m of the shelter entrance.

#### Threats to Site Integrity

The location of the new MTB track alignment may increase site visitation leading to a degree of disturbance to the site. Potential intact deposits at the entrance to the shelter will undergo disturbance from the MTB track.



**Plate 1:** Curry Street PAD 01



**Plate 2:** PAD 01 with new MTB track alignment marked as pink line on tree to right

### North-East Survey – West of Engravings Trail

The MTB track alignment runs south of the Bluff Side Track and west of the Engravings Trail, traversing a winding mid-slope, dissected by three first order tributaries of Bantry Bay. The new alignment runs for approximately 2.3km. Where possible, a 10m wide corridor was surveyed along the alignment. The mid-hill/slope is thickly forested with predominantly dry sclerophyll forest and coastal heath. Wet areas dominated by Coral Fern (*Gleichenia dicarpa*) and Sword Grass (*Gahnia grandis*) were encountered within the vicinity of the minor tributaries of Bantry Bay. Visibility and exposure within the area is low, largely limited to occasional rock platforms and rock shelters. As a result, effective survey coverage of the alignment was assessed at just over 2% (Table 3).

Survey Unit	Landform	Survey Unit Area (sq. m)	Visibility %	Exposure %	Effective coverage area (sq. m)	Effective coverage %
Area: New Alignment East	Simple Slope – mid slope	23000	<20	10	460	2

**Table 3:** Survey 5, West of Engravings Trail section

### Rose Quartz Shelter

Rose Quartz Shelter consists of a large south-east facing shelter with artefacts located 150m south of the western end of Utyana Place, Frenchs Forest (Figure 1). The shelter is 38m long x 8m deep x 3m high (Plates 3-4; Figure 2). The eastern end of the shelter has a first order tributary draining over the top, flowing through the shelter towards the central area before heading south away from the site. Considerable water seepage occurs over much of the shelter walls resulting in heavy mineralisation and a predominantly damp deposit. Past rock fall has also occurred across much of the shelter floor.



One rose quartz core and one quartz proximal flake were recorded in the drip-line of the shelter, approximately 25m from the western end (Plates 5-6; Figure 2). At present, the MTB track alignment is positioned directly over the artefact location.

### Threats to Site Integrity

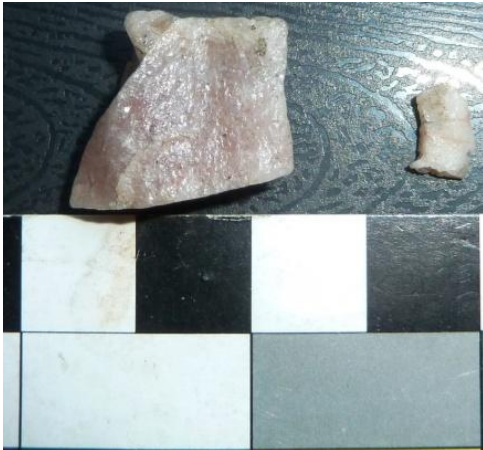
The location of the new MTB track alignment will disturb the archaeological deposits in front of the drip-line of the shelter. The new alignment may damage the artefacts recorded during the survey. Increased site visitation may lead to increased impacts to the shelter deposits.



**Plate 3:** Eastern section of Rose Quartz Shelter



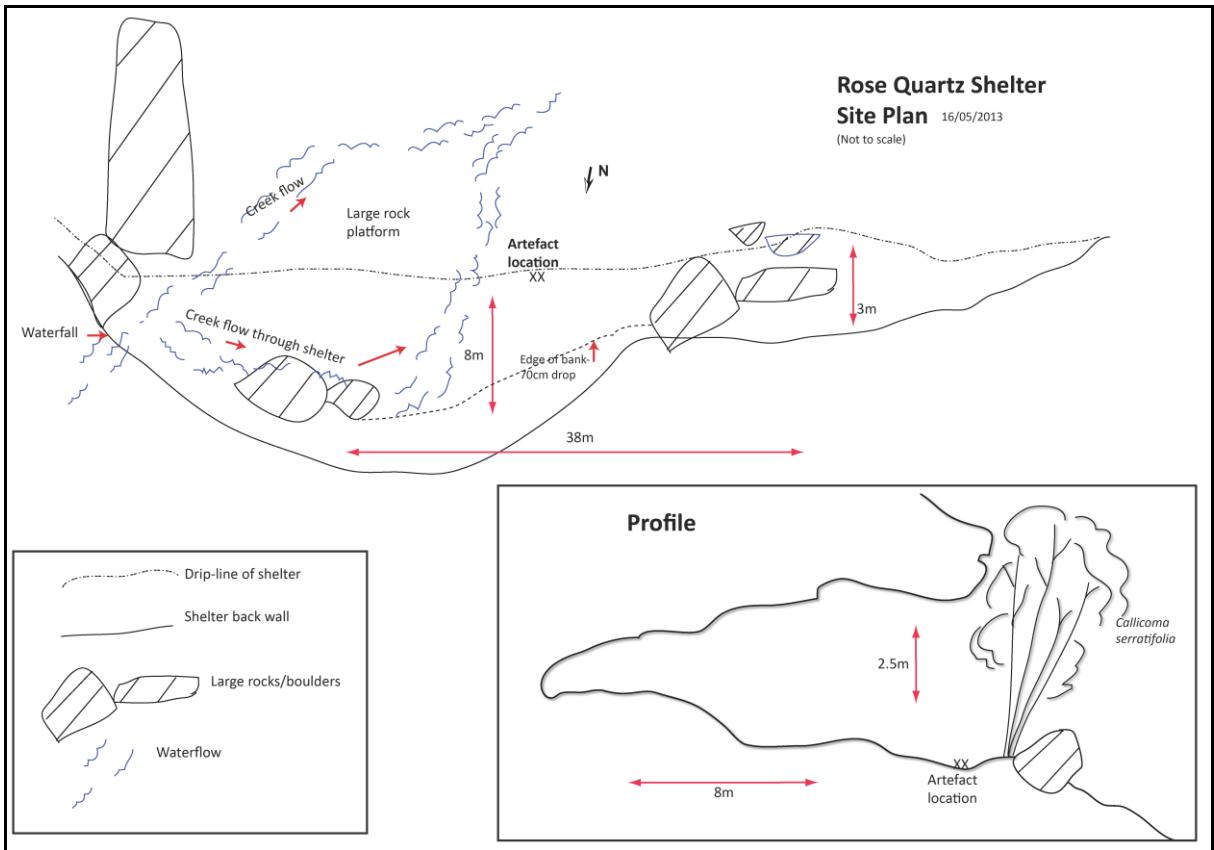
**Plate 4:** Western section of Rose Quartz Shelter



**Plate 5:** Artefacts 1-2 at Rose Quartz Shelter



**Plate 6:** Flake scar on quartz core at Rose Quartz Shelter



**Figure 2:** Rose Quartz Shelter site plan and profile

## Honeycomb Ceiling Shelter

Honeycomb Ceiling Shelter consists of a small west facing shelter with artefacts located approximately 140m south-east of the Rose Quartz Shelter (Figure 1). The shelter is 12m long x 2.7m deep x 1.5m tall with a honeycomb weathered ceiling (Plates 7-8). The shelter has a loose, sandy surface deposit with occasional charcoal fragments, possibly hearth related. Two quartz artefacts were recorded at the rear of the central section of the shelter (Plates 9-10). On the shelter back wall behind the artefact location, approximately 30cm above floor level, a possible remnant rock art drawing occurs consisting of a short, thick horizontal black line.

### Threats to Site Integrity

The location of the new MTB track alignment will disturb the archaeological deposits at the front of the shelter. Increased site visitation may lead to increased impacts to the shelter deposits.



**Plate 7:** Honeycomb Ceiling Shelter



**Plate 8:** Honeycomb Ceiling Shelter with flagged bike track alignment to right



**Plate 9:** Artefacts at Honeycomb Ceiling Shelter



**Plate 10:** Flake scar on artefact at Honeycomb Ceiling Shelter

## **Broken Glass Shelter**

Broken Glass Shelter consists of a long west facing shelter with isolated artefact located approximately 150m south-east of the Honeycomb Ceiling Shelter (Figure 1) and 100m south of AHIMS Site 45-6-0011, 'Frenchs Forest Kangaroo Site'. The shelter is 35m long x 2.7m deep x 3.4m tall (Plate 11). The shelter floor has a thin, sandy deposit over sandstone bedrock with numerous shale and sandstone fragments. Recent glass and other rubbish fragments also occur across the shelter floor. A vehicle has previously been driven off the roof of the shelter and its rusted remains are located approximately 15m down-slope of the central part of the shelter. Rock fall has occurred in the past across the southern section of the site.

Towards the centre of the deposit one quartz core fragment was recorded in the shelter drip-line (Plates 12-13). On the shelter back wall in the northern section of the site there is a possible faded, circular scratched rock art image (Plate 14).

### **Threats to Site Integrity**

The MTB track will be positioned between 5-15m in front of the shelter below a rock bench approximately 1.5-2m high. Increased visitation of the site may occur from bike riders due to the close proximity of the site to the MTB track alignment. However, direct impacts to the site will not occur from track use.





**Plate 11:** Broken Glass Shelter



**Plate 12:** Quartz core at Broken Glass Shelter



**Plate 13:** Flake scar on core at Broken Glass Shelter



**Plate 14:** Possible circular scratched area on back wall at Broken Glass Shelter

## SCIENTIFIC VALUES/SIGNIFICANCE ASSESSMENT

---

Significance is assessed according to principles first outlined in the International Council for Monuments and Sites (ICOMOS), Burra Charter (current Charter – 2004). Not all heritage places are assessed as worthy of equal consideration and management (Pearson and Sullivan 1995). Archeologists gather data about a site, place or landscape in order to prepare a statement of significance which in turn provides the contextual framework for appropriate management principles.

OEH recognizes that there are two key types of significance that should be addressed in relation to Aboriginal sites; social significance and archaeological significance (NPWS 1997). A further criterion concerns the aesthetic significance of a site and site locations.

The aesthetic value of a site or place includes '*aspects of sensory perception (sight, touch, sound, taste and smell)...may include consideration of the form, scale, colour, texture and material of the fabric; and the smells and sounds associated with the place...*' (Burra Charter 2004:80). A key aspect of the aesthetic significance is the distinctiveness of a place or site in the surrounding landscape and the ability of a place to inspire or evoke strong feelings.

The social/cultural significance refers to the significance of a place or site to a particular community group. This may relate to sites, objects or landscapes that hold traditional or contemporary significance to Aboriginal people. This includes Aboriginal people's general concern for the welfare of sites and their protection. The social significance of a site may or may not match the archaeological significance of a site.

The archaeological significance of a site is outlined by its potential to contribute information that will increase understanding of past cultural practices. Some of the criteria most often applied to assess the archaeological or scientific significance of Aboriginal archaeological features are: Research potential, rarity, representativeness, integrity, connectedness and comparativeness.

- *Research Potential:* A site or sites may have high significance in their ability to provide a high level of information about past human practices in an area or locality. The area may be local, regional, state or national
- *Rarity:* A rare site or cultural feature is distinctive or unique in relation to other sites and features on a local, regional, state or national level
- *Representativeness:* A cultural feature or site type is of high significance if it is regarded as highly representative of such a type or feature, again, on a local, regional state or national level
- *Integrity:* The integrity of a site or cultural feature refers to the level of intactness of the site or features. This may refer to the intactness of a deposit or a rock art panel, a cluster of grinding grooves or a site complex

- *Connectedness and Comparativeness*: A site with a high level of connectedness may have cultural features that intimately relate to other cultural features either at an individual site, other nearby sites in a region or sites in a much larger area (e.g. nation-wide). Sites with a high level of comparativeness are significant in their ability to highlight similarity or differences in past human practices locally, regionally or nationally

The following table provides an overview of the level of archaeological significance assessed for sites located during the current survey.

Site Number/Name	Scientific Significance	Description
Curry Street PAD 01	Low	Potential archaeological deposit. Deposit appears to be intact
Rose Quartz Shelter	Low	Minor occupation shelter with potential areas of intact deposit, primarily in the western section of the shelter
Honeycomb Ceiling	Moderate	Minor occupation shelter with intact deposit
Broken Glass Shelter	Low	Minor occupation shelter with bedrock floor and low potential for deep archaeological deposit

**Table 4:** Site significance assessment

## RECOMMENDATIONS

---

The *National Parks and Wildlife Act 1974 (NPW Act)* is the primary statutory control in relation to Aboriginal heritage in NSW. One of the objectives of the NPW Act is the: *“Conservation of objects, places or features (including biological diversity) of cultural value within the landscape, including but not limited to (i) places, objects and features of significance to Aboriginal people”* (s.2A(1)(b)). An **“Aboriginal Object”** is defined as *“any deposit, object or material evidence (not being a handicraft made for sale) relating to the Aboriginal habitation of the area that comprises New South Wales, being habitation before or concurrent with (or both) the occupation of that area by persons of non-Aboriginal extraction, and includes Aboriginal remains”*. An **Aboriginal place** is a place which has been so declared by the Minister administering the NPW Act because the Minister believes that the place is or was of special significance to Aboriginal culture. It may or may not contain Aboriginal objects (S.84).

All Aboriginal ‘objects’ and ‘places’ (Aboriginal Sites) are protected under Section 90 of the Act. It is an offence to destroy, deface or damage an Aboriginal site without the prior consent of the Director-General of OEH.

Management and Mitigation Measures to reduce harm in relation to the MTB track will revolve around construction of the track away from direct impacts to sites located during the current survey. With this in mind the following recommendations are made for sites in relation to the MTB track realignment.

### Recommendations for MTB Track Realignment

- **Curry Street PAD 01:** Move MTB track alignment from vicinity of the shelter to prevent erosion of deposits at the shelter entrance.
- **Rose Quartz Shelter:** Move MTB track alignment from vicinity of the shelter to prevent erosion of deposits at the shelter entrance and reduce the likelihood of a substantial amount of increased site visitation.
- **Honeycomb Ceiling Shelter:** Move MTB track alignment from vicinity of the shelter to prevent erosion of deposits at the shelter entrance and reduce the likelihood of a substantial amount of increased site visitation.
- **Broken Glass Shelter:** There are no recommendations in relation to the MTB track for the Broken Glass Shelter as it will be positioned away from direct impacts to the site.