

Department of Planning, Industry and Environment

# Northern Basin Toolkit - Gwydir

Supporting the health of rivers, watercourses and wetlands



The Northern Basin Toolkit complements the 70 gigalitre reduction in water recovery targets in the northern Basin. The Gwydir Constraints Measures Project is one of a suite of projects funded through the toolkit aimed at supporting ecological and community outcomes. The project aims to increase the efficiency of environmental water use and seeks to implement measures that will achieve enduring environmental outcomes.

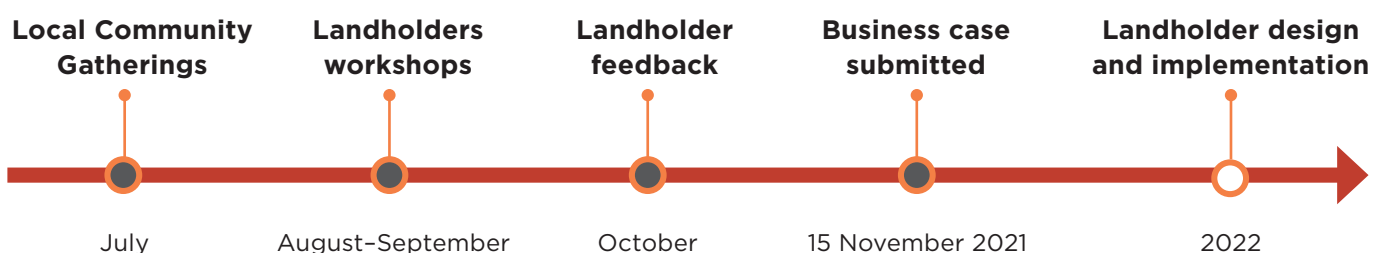
## Community input needed to develop business case

A business case for implementing the Gwydir Constraints Measures Project (Gwydir CMP) will be prepared and submitted to the Australian Government by November 2021. The business case will seek significant funding from the Australian Government. If successful, the funds will be used to improve environmental water delivery efficiencies and river health in the Gwydir catchment.

Over the next few months we will be working with the local community to develop the business case. There will be a series of local community gatherings and workshops to:

- discuss project objectives and opportunities
- bring local knowledge and community needs into the scoping of potential measures
- create strategies for on-ground outcomes.

If the funding request is successful, the project team will work with individual landholders next year to design and implement the improvements outlined in the business case.



## How will the project's goal be achieved?

The project will establish water for the environment corridors in partnership with stakeholders. A variety of solutions and measures may be implemented within these corridors to:

- ensure water is delivered more efficiently
- provide greater flexibility
- support and enhance the long-term health of rivers, watercourses and wetlands.

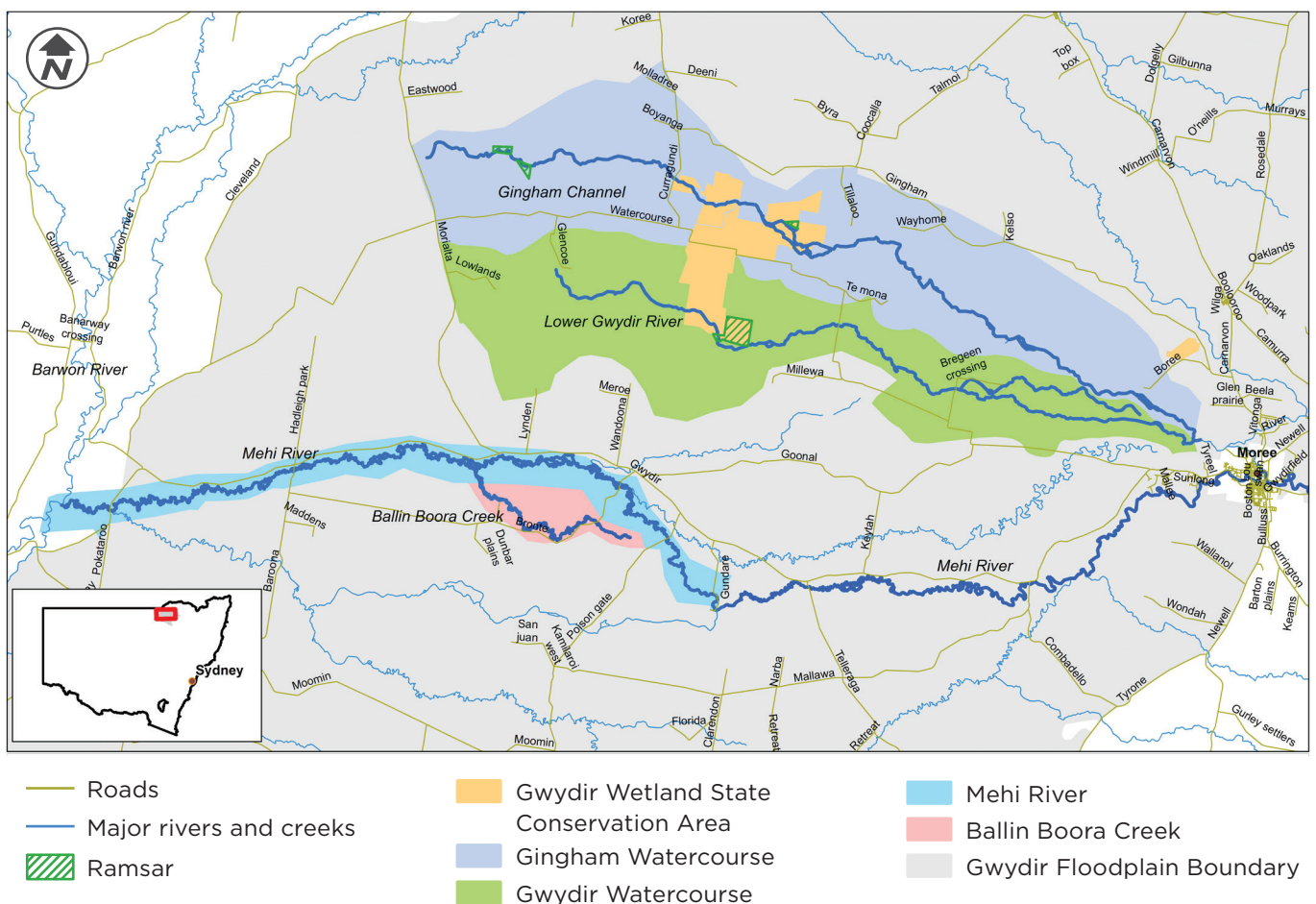
These measures may be physical or non-physical and will vary depending on individual and situational factors.

## Which watercourses are involved?

The Gwydir CMP comprises three areas:

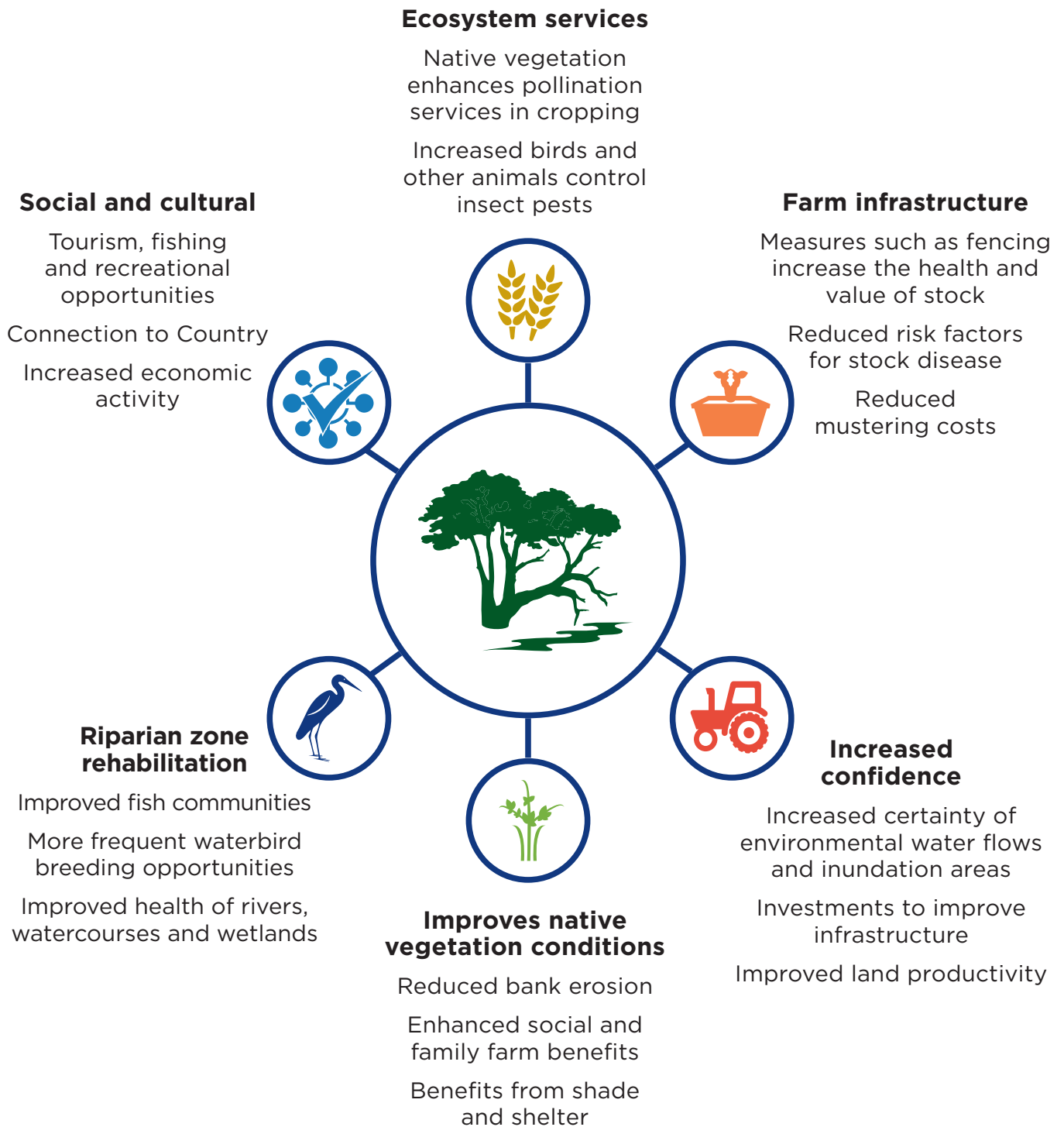
- Gingham Watercourse
- Lower Gwydir Watercourse
- Lower Mehi River

The NSW Government is also scoping a business case for Ballin Boora Creek.



## Why should I get involved?

There are many co-benefits with creating water efficiencies including economic and environmental.



## Will I be contacted about the project?

Watercourse landholders within the project area will be contacted directly via post and invited to community gatherings and workshops. These activities will be held from July to September 2021 in the Moree area.

Community gatherings will introduce the Project providing an overview including objectives, scope and timings.

## Local community gatherings

### RSVP by Friday 16 July 2021

These community gatherings are designed for watercourse landholders in the Project area. The gatherings will provide specific information for each watercourse. If you cannot attend a gathering targeted for your area or have properties in multiple areas, please contact us.

<b>Lower Gwydir Watercourse</b> Moree	Monday 19 July 2021 1-3pm	Tuesday 20 July 2021 9-11am
<b>Gingham Watercourse</b> Moree	Tuesday 20 July 2021 1-3pm	Friday 23 July 2021 9-11am
<b>Lower Mehi River and Ballin Boora Creek</b> Bullarah Hall	Thursday 22 July 2021 9-11am	Thursday 22 July 2021 1-3pm



### Landholders workshops

We also invite watercourse landholders to join small localised workshops in August. Together we will discuss the opportunities, considerations and identify potential solutions and measures.

We will provide more information about the workshops at the community gatherings and in future correspondence.

**Please note:** These meetings and workshops will be managed in accordance with COVID-19 requirements, including QR code sign in.

### How can I find out more and get involved?

Additional gatherings for the broader community may be held upon request. Please contact us to register your interest.

Join our mailing list to receive information on community meetings, newsletters and other information at different project stages.

#### Online

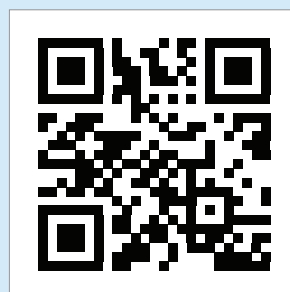
[environment.nsw.gov.au/nbtk/gwydircmp](https://environment.nsw.gov.au/nbtk/gwydircmp)

#### Email

[gwydir.cmp@environment.nsw.gov.au](mailto:gwydir.cmp@environment.nsw.gov.au)

#### Phone

0456 847 561



This project is delivered under the Murray Darling Basin Plan by the Department of Planning, Industry and Environment and funded through the Australian Government Department of Agriculture, Water and the Environment. Cover photo: Reed islands Lower Gwydir (Big Leather) Watercourse RAMSAR Wetlands Murray Darling Basin, (Daryl Albertson/DPIE).

The Department of Planning, Industry and Environment (DPIE) will not disclose your personal information to anyone without your consent, unless legally required to do so.

© 2021 State of NSW and Department of Planning, Industry and Environment.  
EES2021/0260 ISBN 978-1-922672-06-3 June 2021