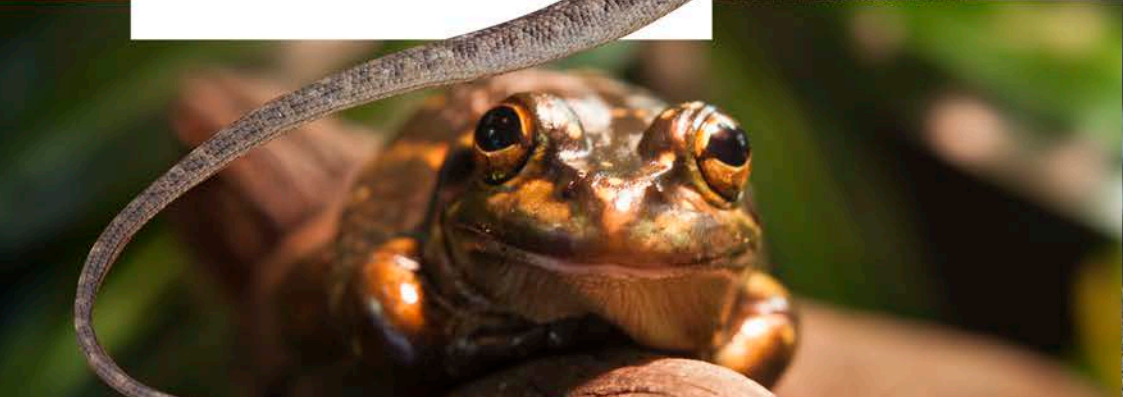




**NSW Native
Animal Keepers'
Species List
2016**



© 2019 State of NSW and Office of Environment and Heritage

With the exception of photographs, the State of NSW and Office of Environment and Heritage are pleased to allow this material to be reproduced in whole or in part for educational and non-commercial use, provided the meaning is unchanged and its source, publisher and authorship are acknowledged. Specific permission is required for the reproduction of photographs.

The Office of Environment and Heritage (OEH) has compiled this report in good faith, exercising all due care and attention. No representation is made about the accuracy, completeness or suitability of the information in this publication for any particular purpose. OEH shall not be liable for any damage which may occur to any person or organisation taking action or not on the basis of this publication. Readers should seek appropriate advice when applying the information to their specific needs.

All content in this publication is owned by OEH and is protected by Crown Copyright, unless credited otherwise. It is licensed under the Creative Commons Attribution 4.0 International (CC BY 4.0), subject to the exemptions contained in the licence. The legal code for the licence is available at Creative Commons.

OEH asserts the right to be attributed as author of the original material in the following manner: © State of New South Wales and Office of Environment and Heritage 2019.

Front cover images: Eastern snake-necked turtle (*Chelodina longicollis*), Rosie Nicolai; Peninsula Crevice Dragon (*Ctenophorus fionni*), Ken Stepnell; Green and Gold Bell Frog (*Litoria aurea*), Rosie Nicolai; Star Finch (*Neochmia ruficauda*), Roger Smith; Carpet/Diamond python (*Morelia spilota*), John Turbill.

Published by:

Office of Environment and Heritage
59 Goulburn Street, Sydney NSW 2000
PO Box A290, Sydney South NSW 1232
Phone: +61 2 9995 5000 (switchboard)
Phone: 1300 361 967 (OEH and national parks enquiries)
TTY users: phone 133 677, then ask for 1300 361 967
Speak and listen users: phone 1300 555 727, then ask for 1300 361 967
Email: info@environment.nsw.gov.au
Website: www.environment.nsw.gov.au

Report pollution and environmental incidents

Environment Line: 131 555 (NSW only) or info@environment.nsw.gov.au

See also www.environment.nsw.gov.au

ISBN 978-1-925755-23-7 OEH 2016/0264

First published in April 2016; reprinted January 2019 with changes to Broad-tailed gecko species.

Contents

| | |
|---|------------|
| Contents | ii |
| Abbreviations | iii |
| Introduction | 1 |
| Amphibians | 2 |
| Birds | 6 |
| Mammals | 16 |
| Reptiles | 17 |
| Exempt species | 33 |
| Keeping native animals as pets | 34 |
| Where can I find out about animal keeping?..... | 34 |

Abbreviations

Licence classes

A1 basic amphibian

A2 advanced amphibian

B1 basic bird

B2 advanced bird

B3 emu endorsement

Companion Companion Native Animal Keeper Licence

M1 basic mammal

R1 basic reptile

R2 advanced reptile non venomous

R3 advanced reptile, venomous, category 1

R4 advanced reptile, venomous, category 2

R5 advanced reptile, venomous, category 3

Introduction

The *NSW Native Animal Keepers' Species List 2016* contains the names of all fauna species that may be kept under licence.

Animals are listed by group (amphibian, bird, reptile, mammal) and according to the licence type required to keep that animal. If the animal species you want to keep is not listed, you generally cannot legally keep it (see exceptions below).

There is a temporary freeze on requests to add new species of fauna to the *NSW Native Animal Keeper's Species List*. This is due to the Independent Review of Biodiversity Legislation in NSW. The review has recommended changes to wildlife licensing, which are likely to impact this list and many Native Animal Keeper and Companion Animal Keeper Licences. The Independent Review Panel's [final report](#) is available to download. Until further details about proposed changes are available all current licence requirements continue to apply.

Some points to note:

- A new species list is produced by the Office of Environment and Heritage (OEH) each year. You can only hold an animal that is applicable to class as listed in the current year's species list.
- Some animals are listed as exempt and a licence is not required to hold or trade those species (see exempt species list at the back of this document).
- Some hybridised animals are recorded in this list. OEH does not support native animal keepers who breed between animals of different species. Regulations prohibit the breeding of native waterfowl with domestic waterfowl.
- Your licence must be endorsed with the class under which the species is applicable. Holding requirements for venomous reptiles must be in accordance with the requirements contained in the class criteria for advanced reptile venomous category 1, 2 or 3 as contained in the Application for an Advanced Class – Native Animal Keepers' Licence.
- If you acquire or dispose of a native species of cockatoo listed as applicable to class B1, or any species of animal listed under classes A2, B2, B3, R2, R3, R4 or R5 you must notify the Director General by email or in writing of the details of the transaction within 14 days of the transaction taking place. You can email wildlife.licensing@environment.nsw.gov.au with the transaction details.
- Some animals are not suitable to be held under a Native Animal Keeper Licence, including all species of Crocodylidae (crocodiles); Cheloniidae and Dermochelyidae (sea turtles); Hydrophiidae and Laticaudidae (sea snakes); and all non-native (exotic) species.
- Non-native (exotic) species of animal can be held in Australia only by licensed exhibitors (for example, zoos) or under a licence from the NSW Department of Primary Industries. If you want to keep an exotic animal, telephone (02) 6391 3100.

NSW Native Animal Keeper Species List 2016

| Amphibians | | | | |
|------------------------------------|------------------------------|---------------------|------------------------------------|----------------------|
| Scientific name | Common name | Species code | Applicable to licence class | Species group |
| <i>Adelotus brevis</i> | Tusked frog | 3001 | A1, A2 | Ground frog |
| <i>Crinia parinsignifera</i> | Eastern sign-bearing froglet | 3131 | A1, A2 | Ground frog |
| <i>Crinia signifera</i> | Common eastern froglet | 3134 | A1, A2 | Ground frog |
| <i>Crinia sloanei</i> | Sloane's froglet | 3135 | A1, A2 | Ground frog |
| <i>Cyclorana alboguttata</i> | Striped burrowing frog | 3165 | A1, A2, Companion | Ground frog |
| <i>Cyclorana brevipes</i> | Short-footed frog | 3018 | A1, A2, Companion | Ground frog |
| <i>Cyclorana novaehollandiae</i> | New Holland frog | 3024 | A1, A2, Companion | Ground frog |
| <i>Cyclorana platycephala</i> | Water-holding frog | 3025 | A1, A2, Companion | Ground frog |
| <i>Lechriodus fletcheri</i> | Fletcher's frog | 3052 | A1, A2, Companion | Ground frog |
| <i>Limnodynastes dumerilii</i> | Bullfrog | 3058 | A1, A2, Companion | Ground frog |
| <i>Limnodynastes fletcheri</i> | Long-thumbed frog | 3059 | A1, A2, Companion | Ground frog |
| <i>Limnodynastes interioris</i> | Giant bullfrog | 3060 | A1, A2, Companion | Ground frog |
| <i>Limnodynastes ornatus</i> | Ornate burrowing frog | 3112 | A1, A2, Companion | Ground frog |
| <i>Limnodynastes peronii</i> | Striped marsh frog | 3061 | A1, A2, Companion | Ground frog |
| <i>Limnodynastes salmini</i> | Salmon-striped frog | 3062 | A1, A2, Companion | Ground frog |
| <i>Limnodynastes tasmaniensis</i> | Spotted marsh frog | 3063 | A1, A2, Companion | Ground frog |
| <i>Limnodynastes terraereginae</i> | Northern banjo frog | 3064 | A1, A2, Companion | Ground frog |
| <i>Litoria bicolor</i> | Northern dwarf tree frog | 3167 | A1, A2 | Tree frog |
| <i>Litoria caerulea</i> | Green tree frog | 3171 | A1, A2, Companion | Tree frog |
| <i>Litoria chloris</i> | Red-eyed tree frog | 3174 | A1, A2, Companion | Tree frog |
| <i>Litoria citropa</i> | Blue Mountains tree frog | 3175 | A1, A2, Companion | Tree frog |

NSW Native Animal Keeper Species List 2016

Amphibians

| Scientific name | Common name | Species code | Applicable to licence class | Species group |
|-------------------------------|--------------------------|--------------|-----------------------------|---------------|
| <i>Litoria dentata</i> | Keferstein's tree frog | 3180 | A1, A2, Companion | Tree frog |
| <i>Litoria ewingii</i> | Southern brown tree frog | 3182 | A1, A2, Companion | Tree frog |
| <i>Litoria fallax</i> | Eastern dwarf tree frog | 3183 | A1, A2 | Tree frog |
| <i>Litoria freycineti</i> | Freycinet's frog | 3184 | A1, A2, Companion | Tree frog |
| <i>Litoria gilleni</i> | Centralian tree frog | 3185 | A1, A2, Companion | Tree frog |
| <i>Litoria gracilentata</i> | Dainty tree frog | 3187 | A1, A2, Companion | Tree frog |
| <i>Litoria infrafrenata</i> | White-lipped tree frog | 3189 | A1, A2, Companion | Tree frog |
| <i>Litoria jervisiensis</i> | Jervis Bay tree frog | 3190 | A1, A2, Companion | Tree frog |
| <i>Litoria latopal mata</i> | Broad-palmed frog | 3191 | A1, A2, Companion | Tree frog |
| <i>Litoria lesueuri</i> | Lesueur's frog | 3316 | A1, A2, Companion | Tree frog |
| <i>Litoria moorei</i> | Moore's frog | 3197 | A1, A2, Companion | Tree frog |
| <i>Litoria nasuta</i> | Rocket frog | 3199 | A1, A2 | Tree frog |
| <i>Litoria peronii</i> | Peron's tree frog | 3204 | A1, A2, Companion | Tree frog |
| <i>Litoria phyllochroa</i> | Green stream frog | 3206 | A1, A2 | Tree frog |
| <i>Litoria rothii</i> | Roth's tree frog | 3209 | A1, A2, Companion | Tree frog |
| <i>Litoria rubella</i> | Desert tree frog | 3210 | A1, A2 | Tree frog |
| <i>Litoria splendida</i> | Magnificent tree frog | 3212 | A1, A2, Companion | Tree frog |
| <i>Litoria tyleri</i> | Tyler's tree frog | 3214 | A1, A2, Companion | Tree frog |
| <i>Litoria verreauxii</i> | Verreaux's tree frog | 3215 | A1, A2 | Tree frog |
| <i>Neobatrachus centralis</i> | Trilling frog | 3083 | A1, A2, Companion | Ground frog |
| <i>Neobatrachus sudelli</i> | Painted burrowing frog | 3086 | A1, A2, Companion | Ground frog |

NSW Native Animal Keeper Species List 2016

| Amphibians | | | | |
|---------------------------------|---------------------------------------|---------------------|------------------------------------|----------------------|
| Scientific name | Common name | Species code | Applicable to licence class | Species group |
| <i>Uperoleia capitulata</i> | Small-headed toadlet | 3013 | A1, A2 | Ground frog |
| <i>Uperoleia fusca</i> | Dusky toadlet | 3035 | A1, A2 | Ground frog |
| <i>Uperoleia laevigata</i> | Smooth toadlet | 3158 | A1, A2 | Ground frog |
| <i>Uperoleia rugosa</i> | Wrinkled toadlet | 3151 | A1, A2 | Ground frog |
| <i>Uperoleia tyleri</i> | Tyler's toadlet | 3302 | A1, A2 | Ground frog |
| <i>Assa darlingtoni</i> | Pouched frog | 3007 | A2 | Ground frog |
| <i>Crinia deserticola</i> | Desert froglet | 3128 | A2 | Ground frog |
| <i>Crinia tinnula</i> | Wallum froglet | 3137 | A2 | Ground frog |
| <i>Cyclorana cultripes</i> | Knife-footed frog | 3020 | A2 | Ground frog |
| <i>Cyclorana verrucosa</i> | Rough frog | 3026 | A2 | Ground frog |
| <i>Geocrinia laevis</i> | Tasmanian smooth froglet | 3029 | A2 | Ground frog |
| <i>Geocrinia victoriana</i> | Victorian smooth froglet | 3033 | A2 | Ground frog |
| <i>Geocrinia vitellina</i> | Orange-bellied frog | 3006 | A2 | Ground frog |
| <i>Heleioporus australiacus</i> | Giant burrowing frog | 3042 | A2 | Ground frog |
| <i>Litoria aurea</i> | Green and golden bell frog | 3166 | A2 | Tree frog |
| <i>Litoria booroolongensis</i> | Booroolong frog | 3168 | A2 | Tree frog |
| <i>Litoria brevipalmata</i> | Green-thighed frog | 3169 | A2 | Tree frog |
| <i>Litoria burrowsae</i> | Tasmanian tree frog | 3170 | A2 | Tree frog |
| <i>Litoria dahlia</i> | Dahl's aquatic frog | 3179 | A2 | Tree frog |
| <i>Litoria eucnemis</i> | Fringed tree frog, growling tree frog | 3304 | A2 | Tree frog |
| <i>Litoria littlejohni</i> | Littlejohn's tree frog | 3039 | A2 | Tree frog |

NSW Native Animal Keeper Species List 2016

Amphibians

| Scientific name | Common name | Species code | Applicable to licence class | Species group |
|-----------------------------------|---------------------------|--------------|-----------------------------|---------------|
| <i>Litoria pearsoniana</i> | Pearson's green tree frog | 3003 | A2 | Tree frog |
| <i>Litoria raniformis</i> | Southern bell frog | 3207 | A2 | Tree frog |
| <i>Litoria revelata</i> | Whirring tree frog | 3219 | A2 | Tree frog |
| <i>Litoria xanthomera</i> | Orange-thighed frog | 3220 | A2 | Tree frog |
| <i>Mixophyes balbus</i> | Stuttering frog | 3073 | A2 | Ground frog |
| <i>Mixophyes fasciolatus</i> | Great barred frog | 3074 | A2 | Ground frog |
| <i>Mixophyes iteratus</i> | Giant barred frog | 3075 | A2 | Ground frog |
| <i>Notaden bennettii</i> | Crucifix frog | 3098 | A2 | Ground frog |
| <i>Paracrinia haswelli</i> | Haswell's froglet | 3103 | A2 | Ground frog |
| <i>Phyloria kundagungan</i> | Mountain frog | 3107 | A2 | Ground frog |
| <i>Phyloria loveridgei</i> | Loveridge's frog | 3108 | A2 | Ground frog |
| <i>Phyloria sphagnicolus</i> | Sphagnum frog | 3109 | A2 | Ground frog |
| <i>Pseudophryne australis</i> | Red-crowned toadlet | 3116 | A2 | Ground frog |
| <i>Pseudophryne bibronii</i> | Bibron's toadlet | 3117 | A2 | Ground frog |
| <i>Pseudophryne coriacea</i> | Red-backed toadlet | 3118 | A2 | Ground frog |
| <i>Pseudophryne dendyi</i> | Southern toadlet | 3120 | A2 | Ground frog |
| <i>Pseudophryne semimarmorata</i> | Southern toadlet | 3125 | A2 | Ground frog |

NSW Native Animal Keeper Species List 2016

| Birds | | | | |
|---|--|---------------------|------------------------------------|----------------------|
| Scientific name | Common name | Species code | Applicable to licence class | Species group |
| <i>Alisterus scapularis</i> | Australian king parrot | 0281 | B1, B2, B3, Companion | Parrot |
| <i>Aprosmictus erythropterus</i> | Red-winged parrot | 0280 | B1, B2, B3, Companion | Parrot |
| <i>Barnardius zonarius barnardi</i> | Mallee ringneck | 0291 | B1, B2, B3, Companion | Parrot |
| <i>Barnardius zonarius macgillivrayi</i> | Cloncurry parrot | 0292 | B1, B2, B3, Companion | Parrot |
| <i>Barnardius zonarius macgillivrayi</i> x <i>Barnardius semitorquatus</i> | Cloncurry twenty eight hybrid parrot | T218 | B1, B2, B3, Companion | Parrot |
| <i>Cacatua Hybrid</i> | Galah/pink cockatoo | G/PH | B1, B2, B3, Companion | Parrot |
| <i>Cacatua leadbeateri</i> | Major Mitchell's cockatoo | 0270 | B1, B2, B3, Companion | Parrot |
| <i>Cacatua leadbeateri</i> x <i>galerita</i> | Major Mitchell's/sulphur-crested cockatoo hybrid | MMC/SCC | B1, B2, B3, Companion | Parrot |
| <i>Callocephalon fimbriatum</i> | Gang-gang cockatoo | 0268 | B1, B2, B3, Companion | Parrot |
| <i>Calyptorhynchus banksii</i> | Red-tailed black cockatoo | 0264 | B1, B2, B3, Companion | Parrot |
| <i>Calyptorhynchus baudinii</i> | Long-billed black cockatoo | 0266 | B1, B2, B3, Companion | Parrot |
| <i>Calyptorhynchus funereus</i> | Yellow-tailed black cockatoo | 0267 | B1, B2, B3, Companion | Parrot |
| <i>Calyptorhynchus lathami</i> | Glossy black cockatoo | 0265 | B1, B2, B3, Companion | Parrot |
| <i>Calyptorhynchus latirostris</i> | Short-billed black cockatoo | 0794 | B1, B2, B3, Companion | Parrot |
| <i>Columba leucomela</i> | White-headed pigeon | 0028 | B1, B2, B3, Companion | Pigeon and dove |
| <i>Eclectus roratus macgillivrayi</i> | Eclectus parrot (Australian sub-species) | 8029 | B1, B2, B3, Companion | Parrot |
| <i>Geophaps plumifera</i> | Spinifex pigeon | 0042 | B1, B2, B3, Companion | Pigeon and dove |
| <i>Geophaps scripta</i> | Squatter pigeon | 0039 | B1, B2, B3, Companion | Pigeon and dove |
| <i>Glossopsitta porphyrocephala</i> | Purple-crowned lorikeet | 0259 | B1, B2, B3, Companion | Parrot |
| <i>Glossopsitta pusilla</i> | Little lorikeet | 0260 | B1, B2, B3, Companion | Parrot |

NSW Native Animal Keeper Species List 2016

Birds

| Scientific name | Common name | Species code | Applicable to licence class | Species group |
|---|--|--------------|-----------------------------|-----------------|
| <i>Heteromunia pectoralis</i> | Pictorella mannikin | 0659 | B1, B2, B3, Companion | Finch |
| <i>Lathamus discolor</i> | Swift parrot | 0309 | B1, B2, B3, Companion | Parrot |
| <i>Lonchura castaneothorax</i> | Chestnut-breasted mannikin | 0657 | B1, B2, B3, Companion | Finch |
| <i>Lonchura flaviprymna</i> | Yellow-rumped mannikin | 0658 | B1, B2, B3, Companion | Finch |
| <i>Neochmia modesta</i> | Plum-headed finch | 0661 | B1, B2, B3, Companion | Finch |
| <i>Neochmia phaeton</i> | Crimson finch | 0664 | B1, B2, B3, Companion | Finch |
| <i>Neochmia temporalis</i> | Red-browed finch | 0662 | B1, B2, B3, Companion | Finch |
| <i>Neophema chrysostoma</i> | Blue-winged parrot | 0306 | B1, B2, B3, Companion | Parrot |
| <i>Neophema Hybrid</i> | Scarlet-chested/turquoise parrot | S/TH | B1, B2, B3, Companion | Parrot |
| <i>Neophema petrophila</i> | Rock parrot | 0308 | B1, B2, B3, Companion | Parrot |
| <i>Neophema pulchella</i> | Turquoise parrot | 0302 | B1, B2, B3, Companion | Parrot |
| <i>Neophema pulchella x Psephotus chrysopterygius</i> | Turquoise parrot/golden-shouldered parrot hybrid | T160 | B1, B2, B3, Companion | Parrot |
| <i>Northiella haematogaster</i> | Blue bonnet | 0297 | B1, B2, B3, Companion | Parrot |
| <i>Northiella haematogaster narethae</i> | Naretha blue bonnet | 0298 | B1, B2, B3, Companion | Parrot |
| <i>Parrot Hybrid</i> | Eastern rosella/mallee ringneck | E/MH | B1, B2, B3, Companion | Parrot |
| <i>Parrot Hybrid</i> | King/red-winged parrot | K/RH | B1, B2, B3, Companion | Parrot |
| <i>Parrot Hybrid</i> | King/superb parrot | K/SH | B1, B2, B3, Companion | Parrot |
| <i>Phaps elegans</i> | Brush bronzewing | 0035 | B1, B2, B3, Companion | Pigeon and dove |
| <i>Phaps histrionica</i> | Flock bronzewing | 0036 | B1, B2, B3, Companion | Pigeon and dove |
| <i>Platycercus caledonicus</i> | Green rosella | 0285 | B1, B2, B3, Companion | Parrot |
| <i>Platycercus elegans</i> | Crimson rosella | 0282 | B1, B2, B3, Companion | Parrot |

NSW Native Animal Keeper Species List 2016

Birds

| Scientific name | Common name | Species code | Applicable to licence class | Species group |
|---|---|--------------|-----------------------------|---------------|
| <i>Platycercus venustus</i> | Northern rosella | 0287 | B1, B2, B3, Companion | Parrot |
| <i>Platycercus venustus x adscitus</i> | Northern rosella/pale-headed rosella hybrid | T155 | B1, B2, B3, Companion | Parrot |
| <i>Platycercus venustus x Barnardius zonarius macgillivrayi</i> | Northern rosella/cloncurry ringneck hybrid | T159 | B1, B2, B3, Companion | Parrot |
| <i>Poephila acuticauda</i> | Long-tailed finch | 0666 | B1, B2, B3, Companion | Finch |
| <i>Poephila cincta</i> | Black-throated finch | 0667 | B1, B2, B3, Companion | Finch |
| <i>Poephila cincta atropygialis</i> | Black-tailed finch | 0668 | B1, B2, B3, Companion | Finch |
| <i>Poephila cincta cincta</i> | Black-throated finch (southern sub-species) | 8324 | B1, B2, B3, Companion | Finch |
| <i>Poephila cincta x Poephila acuticauda</i> | Black-throated finch/long-tailed finch hybrid | T151 | B1, B2, B3, Companion | Finch |
| <i>Poephila personata</i> | Masked finch | 0669 | B1, B2, B3, Companion | Finch |
| <i>Poephila personata leucotis</i> | White-eared finch | 8001 | B1, B2, B3, Companion | Finch |
| <i>Polytelis anthopeplus</i> | Regent parrot | 0278 | B1, B2, B3, Companion | Parrot |
| <i>Polytelis anthopeplus x Aprosmictus erythropterus</i> | Regent parrot/red-winged parrot hybrid | T156 | B1, B2, B3, Companion | Parrot |
| <i>Polytelis anthopeplus x Polytelis alexandrae</i> | Regent parrot/princess parrot hybrid | T148 | B1, B2, B3, Companion | Parrot |
| <i>Polytelis Hybrid</i> | Regent/superb parrot | R/SH | B1, B2, B3, Companion | Parrot |
| <i>Polytelis swainsonii</i> | Superb parrot | 0277 | B1, B2, B3, Companion | Parrot |
| <i>Polytelis swainsonii x Polytelis alexandrae</i> | Superb parrot/princess parrot hybrid | T149 | B1, B2, B3, Companion | Parrot |
| <i>Polytelis swainsonii x Aprosmictus erythropterus</i> | Superb parrot/ red-winged parrot hybrid | SP/RW | B1, B2, B3, Companion | Parrot |
| <i>Psephotus chrysopterygius</i> | Golden-shouldered parrot | 0300 | B1, B2, B3, Companion | Parrot |
| <i>Psephotus varius</i> | Mulga parrot | 0296 | B1, B2, B3, Companion | Parrot |

NSW Native Animal Keeper Species List 2016

| Birds | | | | |
|---|--|---------------------|------------------------------------|----------------------|
| Scientific name | Common name | Species code | Applicable to licence class | Species group |
| <i>Psephotus varius x Psephotus haematonotus</i> | Mulga parrot/red-rumped parrot hybrid | T153 | B1, B2, B3, Companion | Parrot |
| <i>Psephotus varius x Psephotus chrysopterygius</i> | Mulga parrot/golden-shouldered parrot hybrid | T154 | B1, B2, B3, Companion | Parrot |
| <i>Psitteuteles versicolor</i> | Varied lorikeet | 0257 | B1, B2, B3, Companion | Parrot |
| <i>Psitteuteles versicolor x Glossopsitta pusilla</i> | Varied lorikeet/little lorikeet hybrid | T150 | B1, B2, B3, Companion | Parrot |
| <i>Ptilinopus regina</i> | Rose-crowned fruit-dove | 0021 | B1, B2, B3, Companion | Pigeon and dove |
| <i>Sericornis citreogularis</i> | Yellow-throated scrubwren | 0493 | B1, B2, B3, Companion | N/A |
| <i>Sericornis frontalis</i> | White-browed scrubwren | 0488 | B1, B2, B3, Companion | N/A |
| <i>Stagonopleura guttata</i> | Diamond firetail | 0652 | B1, B2, B3, Companion | Finch |
| <i>Taeniopygia bichenovii</i> | Double-barred finch | 0655 | B1, B2, B3, Companion | Finch |
| <i>Taeniopygia bichenovii annulosa</i> | Black-ringed finch | 0656 | B1, B2, B3, Companion | Finch |
| <i>Taeniopygia bichenovii x Taeniopygia guttata</i> | Double-barred finch/zebra finch hybrid | T157 | B1, B2, B3, Companion | Finch |
| <i>Turnix melanogaster</i> | Black-breasted button quail | 0017 | B1, B2, B3, Companion | Quail |
| <i>Alectura lathami</i> | Australian brush turkey | 0008 | B2, B3 | N/A |
| <i>Acanthagenys rufogularis</i> | Spiny-cheeked honeyeater | 0640 | B2, B3 | N/A |
| <i>Acanthiza chrysorrhoa</i> | Yellow-rumped thornbill | 0486 | B2, B3 | N/A |
| <i>Acanthorhynchus tenuirostris</i> | Eastern spinebill | 0591 | B2, B3 | N/A |
| <i>Ailuroedus crassirostris</i> | Green catbird | 0676 | B2, B3 | N/A |
| <i>Amytornis striatus</i> | Striated grasswren | 0513 | B2, B3 | N/A |
| <i>Amytornis textilis</i> | Thick-billed grasswren | 0512 | B2, B3 | N/A |

NSW Native Animal Keeper Species List 2016

| Birds | | | | |
|----------------------------------|--------------------------|---------------------|------------------------------------|----------------------|
| Scientific name | Common name | Species code | Applicable to licence class | Species group |
| <i>Anas castanea</i> | Chestnut teal | 0210 | B2, B3 | Waterfowl |
| <i>Anas gracilis</i> | Grey teal | 0211 | B2, B3 | Waterfowl |
| <i>Anas rhynchos</i> | Australasian shoveler | 0212 | B2, B3 | Waterfowl |
| <i>Anas superciliosa</i> | Pacific black duck | 0208 | B2, B3 | Waterfowl |
| <i>Anseranas semipalmata</i> | Magpie goose | 0199 | B2, B3 | Waterfowl |
| <i>Anthochaera carunculata</i> | Red wattlebird | 0638 | B2, B3 | N/A |
| <i>Anthochaera chrysoptera</i> | Little wattlebird | 0710 | B2, B3 | N/A |
| <i>Aplonis metallica</i> | Metallic starling | 0674 | B2, B3 | N/A |
| <i>Ardea ibis</i> | Cattle egret | 0977 | B2, B3 | N/A |
| <i>Ardea picata</i> | Pied heron | 0190 | B2, B3 | N/A |
| <i>Artamus cinereus</i> | Black-faced woodswallow | 0546 | B2, B3 | N/A |
| <i>Artamus cyanopterus</i> | Dusky woodswallow | 0547 | B2, B3 | N/A |
| <i>Artamus leucorhynchus</i> | White-browed woodswallow | 0545 | B2, B3 | N/A |
| <i>Aythya australis</i> | Hardhead | 0215 | B2, B3 | Waterfowl |
| <i>Burhinus grallarius</i> | Bush stone-curlew | 0174 | B2, B3 | N/A |
| <i>Centropus phasianinus</i> | Pheasant coucal | 0349 | B2, B3 | N/A |
| <i>Cereopsis novaehollandiae</i> | Cape barren goose | 0198 | B2, B3 | Waterfowl |
| <i>Certhionyx variegatus</i> | Pied honeyeater | 0602 | B2, B3 | N/A |
| <i>Charadrius australis</i> | Inland dotterel | 0145 | B2, B3 | N/A |
| <i>Chenonetta jubata</i> | Australian wood duck | 0202 | B2, B3 | Waterfowl |
| <i>Chlamydera maculata</i> | Spotted bowerbird | 0680 | B2, B3 | N/A |

NSW Native Animal Keeper Species List 2016

Birds

| Scientific name | Common name | Species code | Applicable to licence class | Species group |
|---------------------------------------|---------------------------|--------------|-----------------------------|-----------------|
| <i>Cladorhynchus leucocephalus</i> | Banded stilt | 0147 | B2, B3 | N/A |
| <i>Corcorax melanorhamphos</i> | White-winged cough | 0693 | B2, B3 | N/A |
| <i>Cyclopsitta diophthalma</i> | Double-eyed fig-parrot | 0261 | B2, B3 | Parrot |
| <i>Cyclopsitta diophthalma coxeni</i> | Double-eyed fig-parrot | 8028 | B2, B3 | Parrot |
| <i>Cygnus atratus</i> | Black swan | 0203 | B2, B3 | Waterfowl |
| <i>Dacelo leachii</i> | Blue-winged kookaburra | 0323 | B2, B3 | N/A |
| <i>Dacelo novaeguineae</i> | Laughing kookaburra | 0322 | B2, B3 | N/A |
| <i>Dendrocygna arcuata</i> | Wandering whistling duck | 0204 | B2, B3 | Waterfowl |
| <i>Dendrocygna eytoni</i> | Plumed whistling duck | 0205 | B2, B3 | Waterfowl |
| <i>Dicaeum hirundinaceum</i> | Mistletoebird | 0564 | B2, B3 | N/A |
| <i>Ducula bicolor</i> | Pied imperial pigeon | 0026 | B2, B3 | Pigeon and dove |
| <i>Ducula bicolour spilorrhoea</i> | Torresian imperial pigeon | 8839 | B2, B3 | Pigeon and dove |
| <i>Egretta novaehollandiae</i> | White-faced heron | 0188 | B2, B3 | N/A |
| <i>Entomyzon cyanotis</i> | Blue-faced honeyeater | 0641 | B2, B3 | N/A |
| <i>Eopsaltria australis</i> | Eastern yellow robin | 0392 | B2, B3 | N/A |
| <i>Epthianura albifrons</i> | White-fronted chat | 0448 | B2, B3 | N/A |
| <i>Epthianura aurifrons</i> | Orange chat | 0450 | B2, B3 | N/A |
| <i>Epthianura tricolor</i> | Crimson chat | 0449 | B2, B3 | N/A |
| <i>Eulabeornis castaneoventris</i> | Chestnut rail | 0047 | B2, B3 | N/A |
| <i>Fulica atra</i> | Eurasian coot | 0059 | B2, B3 | Waterfowl |
| <i>Gallinula ventralis</i> | Black-tailed native hen | 0055 | B2, B3 | N/A |

NSW Native Animal Keeper Species List 2016

| Birds | | | | |
|------------------------------------|---------------------------|---------------------|------------------------------------|----------------------|
| Scientific name | Common name | Species code | Applicable to licence class | Species group |
| <i>Gallirallus philippensis</i> | Buff-banded rail | 0046 | B2, B3 | N/A |
| <i>Geophaps smithii</i> | Partridge pigeon | 0040 | B2, B3 | Pigeon and dove |
| <i>Gymnorhina tibicen</i> | Australian magpie | 0705 | B2, B3 | N/A |
| <i>Himantopus himantopus</i> | Black-winged stilt | 0146 | B2, B3 | N/A |
| <i>Leucosarcia melanoleuca</i> | Wonga pigeon | 0044 | B2, B3 | Pigeon and dove |
| <i>Lichenostomus melanops</i> | Yellow-tufted honeyeater | 0619 | B2, B3 | N/A |
| <i>Lichenostomus penicillatus</i> | White-plumed honeyeater | 0625 | B2, B3 | N/A |
| <i>Lopholaimus antarcticus</i> | Topknot pigeon | 0027 | B2, B3 | Pigeon and dove |
| <i>Macropygia amboinensis</i> | Brown cuckoo-dove | 0029 | B2, B3 | Pigeon and dove |
| <i>Malacorhynchus membranaceus</i> | Pink-eared duck | 0213 | B2, B3 | Waterfowl |
| <i>Malurus lamberti</i> | Variegated fairy-wren | 0536 | B2, B3 | N/A |
| <i>Malurus amabilis</i> | Lovely fairy-wren | 0539 | B2, B3 | N/A |
| <i>Malurus coronatus</i> | Purple-crowned fairy-wren | 0542 | B2, B3 | N/A |
| <i>Malurus cyaneus</i> | Superb fairy-wren | 0529 | B2, B3 | N/A |
| <i>Malurus elegans</i> | Red-winged fairy-wren | 0538 | B2, B3 | N/A |
| <i>Malurus leucopterus</i> | White-winged fairy-wren | 0535 | B2, B3 | N/A |
| <i>Malurus melanocephalus</i> | Red-backed fairy-wren | 0541 | B2, B3 | N/A |
| <i>Malurus pulcherrimus</i> | Blue-breasted fairy-wren | 0540 | B2, B3 | N/A |
| <i>Malurus splendens</i> | Splendid fairy-wren | 0532 | B2, B3 | N/A |
| <i>Manorina melanocephala</i> | Noisy minor | 0634 | B2, B3 | N/A |
| <i>Melanodryas cucullata</i> | Hooded robin | 0385 | B2, B3 | N/A |

NSW Native Animal Keeper Species List 2016

| Birds | | | | |
|-------------------------------------|------------------------------|---------------------|------------------------------------|----------------------|
| Scientific name | Common name | Species code | Applicable to licence class | Species group |
| <i>Meliphaga lewinii</i> | Lewin's honeyeater | 0605 | B2, B3 | N/A |
| <i>Merops ornatus</i> | Rainbow bee-eater | 0329 | B2, B3 | N/A |
| <i>Myzomela sanguinolenta</i> | Scarlet honeyeater | 0586 | B2, B3 | N/A |
| <i>Nectarinia jugularis</i> | Olive-backed sunbird | 0572 | B2, B3 | N/A |
| <i>Nettapus coromandelianus</i> | Cotton pygmy-goose | 0200 | B2, B3 | Waterfowl |
| <i>Nettapus pulchellus</i> | Green pygmy-goose | 0201 | B2, B3 | Waterfowl |
| <i>Oriolus sagittatus</i> | Olive-backed oriole | 0671 | B2, B3 | N/A |
| <i>Oxyura australis</i> | Blue-billed duck | 0216 | B2, B3 | Waterfowl |
| <i>Pachycephala pectoralis</i> | Golden whistler | 0398 | B2, B3 | N/A |
| <i>Petroica boodang</i> | Scarlet robin | 0380 | B2, B3 | N/A |
| <i>Petroica goodenovii</i> | Red-capped robin | 0381 | B2, B3 | N/A |
| <i>Petroica phoenicea</i> | Flame robin | 0382 | B2, B3 | N/A |
| <i>Petrophassa albipennis</i> | White-quilled rock-pigeon | 0037 | B2, B3 | Pigeon and dove |
| <i>Petrophassa rufipennis</i> | Chestnut-quilled rock-pigeon | 0038 | B2, B3 | Pigeon and dove |
| <i>Phalacrocorax melanoleucos</i> | Little pied cormorant | 0100 | B2, B3 | N/A |
| <i>Philemon corniculatus</i> | Noisy friarbird | 0645 | B2, B3 | N/A |
| <i>Philemon citreogularis</i> | Little friarbird | 0646 | B2, B3 | N/A |
| <i>Phylidonyris nigra</i> | White-cheeked honeyeater | 0632 | B2, B3 | N/A |
| <i>Phylidonyris novaehollandiae</i> | New Holland honeyeater | 0631 | B2, B3 | N/A |
| <i>Pitta iris</i> | Rainbow pitta | 0354 | B2, B3 | N/A |
| <i>Pitta versicolor</i> | Noisy pitta | 0352 | B2, B3 | N/A |

NSW Native Animal Keeper Species List 2016

Birds

| Scientific name | Common name | Species code | Applicable to licence class | Species group |
|----------------------------------|-------------------------|--------------|-----------------------------|-----------------|
| <i>Platalea flavipes</i> | Yellow-billed spoonbill | 0182 | B2, B3 | N/A |
| <i>Plegadis falcinellus</i> | Glossy ibis | 0178 | B2, B3 | N/A |
| <i>Podargus strigoides</i> | Tawny frogmouth | 0313 | B2, B3 | N/A |
| <i>Porphyrio porphyrio</i> | Purple swamphen | 0058 | B2, B3 | N/A |
| <i>Probosciger aterrimus</i> | Palm cockatoo | 0263 | B2, B3 | Parrot |
| <i>Psophodes olivaceus</i> | Eastern whipbird | 0421 | B2, B3 | N/A |
| <i>Ptilinopus magnificus</i> | Wompoo fruit-dove | 0025 | B2, B3 | Pigeon and dove |
| <i>Ptilinopus superbus</i> | Superb fruit-dove | 0023 | B2, B3 | Pigeon and dove |
| <i>Ptilonorhynchus violaceus</i> | Satin bowerbird | 0679 | B2, B3 | N/A |
| <i>Sericulus chrysocephalus</i> | Regent bowerbird | 0684 | B2, B3 | N/A |
| <i>Sphecotheres vieilloti</i> | Australasian figbird | 0432 | B2, B3 | N/A |
| <i>Stagonopleura bella</i> | Beautiful firetail | 0650 | B2, B3 | Finch |
| <i>Stagonopleura oculata</i> | Red-eared firetail | 0651 | B2, B3 | Finch |
| <i>Stictonetta naevosa</i> | Freckled duck | 0214 | B2, B3 | Waterfowl |
| <i>Struthidea cinerea</i> | Apostlebird | 0675 | B2, B3 | N/A |
| <i>Tadorna radjah</i> | Radjah shelduck | 0206 | B2, B3 | Waterfowl |
| <i>Tadorna tadornoides</i> | Australian shelduck | 0207 | B2, B3 | Waterfowl |
| <i>Threskiornis molucca</i> | Australian white ibis | 0179 | B2, B3 | N/A |
| <i>Threskiornis spinicollis</i> | Straw-necked ibis | 0180 | B2, B3 | N/A |
| <i>Todiramphus pyrrhopygia</i> | Red-backed kingfisher | 0325 | B2, B3 | N/A |
| <i>Todiramphus sanctus</i> | Sacred kingfisher | 0326 | B2, B3 | N/A |

NSW Native Animal Keeper Species List 2016

Birds

| Scientific name | Common name | Species code | Applicable to licence class | Species group |
|---------------------------------|------------------------------|---------------------|------------------------------------|----------------------|
| <i>Turnix castanota</i> | Chestnut-backed button-quail | 0015 | B2, B3 | Quail |
| <i>Turnix maculosa</i> | Red-backed button-quail | 0013 | B2, B3 | Quail |
| <i>Turnix olivii</i> | Buff-breasted button-quail | 0016 | B2, B3 | Quail |
| <i>Turnix pyrrhothorax</i> | Red-chested button-quail | 0019 | B2, B3 | Quail |
| <i>Vanellus miles</i> | Masked lapwing | 0133 | B2, B3 | N/A |
| <i>Vanellus tricolor</i> | Banded lapwing | 0135 | B2, B3 | N/A |
| <i>Zosterops lateralis</i> | Silvereye | 0574 | B2, B3 | N/A |
| <i>Dromaius novaehollandiae</i> | Emu | 0001 | B3 | N/A |

NSW Native Animal Keeper Species List 2016

Mammals

| Scientific name | Common name | Species code | Applicable to licence class | Species group |
|----------------------------|------------------------|---------------------|------------------------------------|----------------------|
| <i>Notomys alexis</i> | Spinifex hopping-mouse | 1481 | M1 | Rodent |
| <i>Pseudomys australis</i> | Plains rat | 1469 | M1 | Rodent |

NSW Native Animal Keeper Species List 2016

Reptiles

| Scientific name | Common name | Species code | Applicable to licence class | Species group |
|---|---|--------------|----------------------------------|---------------|
| <i>Acritoscincus platynota</i> | Red-throated cool-skink | 2464 | R1, R2, R3, R4, R5 | Skink |
| <i>Amphibolurus muricatus</i> | Jacky lashtail | 2194 | R1, R2, R3, R4, R5 | Dragon |
| <i>Amphibolurus nobbi</i> | Nobbi lashtail | 2195 | R1, R2, R3, R4, R5 | Dragon |
| <i>Anomalopus brevicollis</i> | Short-necked worm-skink | 2039 | R1, R2, R3, R4, R5 | Skink |
| <i>Anomalopus verreauxii</i> | Three-clawed worm-skink | 2295 | R1, R2, R3, R4, R5 | Skink |
| <i>Antaresia childreni</i> | Children's python | 2619 | R1, R2, R3, R4, R5, Companion | Python |
| <i>Antaresia childreni x Antaresia maculosa</i> | Children's/eastern small-blotched python hybrid | T162 | R1, R2, R3, R4, R5, Companion | Python |
| <i>Antaresia childreni x Antaresia stimsoni</i> | Children's/stimson's python hybrid | T169 | R1, R2, R3, R4, R5, Companion | Python |
| <i>Antaresia maculosa</i> | Eastern small-blotched python | 2818 | R1, R2, R3, R4, R5, Companion | Python |
| <i>Antaresia perthensis</i> | Pygmy python | 2622 | R1, R2, R3, R4, R5, Companion | Python |
| <i>Aspidites melanocephalus</i> | Black-headed python | 2612 | R1, R2, R3, R4, R5, Companion | Python |
| <i>Aspidites ramsayi</i> | Woma | 2613 | R1, R2, R3, R4, R5, Companion | Python |
| <i>Boiga irregularis</i> | Eastern brown tree snake | 2630 | R1, R2, R3, R4, R5 | Colubridae |
| <i>Boiga irregularis fusca</i> | Northern brown tree snake | T172 | R1, R2, R3, R4, R5 | Colubridae |
| <i>Brachyurophis australis</i> | Eastern shovel-nosed snake | 2711 | R1, R2, R3, R4, R5 | Elapidae |
| <i>Cacophis krefftii</i> | Dwarf crowned snake | 2646 | R1, R2, R3, R4, R5 | Elapidae |
| <i>Cacophis squamulosus</i> | Golden crowned snake | 2647 | R1, R2, R3, R4, R5 | Elapidae |

NSW Native Animal Keeper Species List 2016

| <h2>Reptiles</h2> | | | | |
|----------------------------------|------------------------------------|--------------|----------------------------------|-----------------|
| Scientific name | Common name | Species code | Applicable to licence class | Species group |
| <i>Chelodina canni</i> | New guinea snake-necked turtle | 2018 | R1, R2, R3, R4, R5, Companion | Turtle/tortoise |
| <i>Chelodina longicollis</i> | Eastern snake-necked turtle | 2017 | R1, R2, R3, R4, R5, Companion | Turtle/tortoise |
| <i>Chelodina oblonga</i> | Oblong snake-necked turtle | 2019 | R1, R2, R3, R4, R5, Companion | Turtle/tortoise |
| <i>Chelodina Sp.</i> | Long-necked turtle species unknown | T900 | R1, R2, R3, R4, R5, Companion | Turtle/tortoise |
| <i>Christinus marmoratus</i> | Marbled southern gecko | 2126 | R1, R2, R3, R4, R5 | Gecko |
| <i>Cryptoblepharus virgatus</i> | Cream-striped shinning-skink | 2331 | R1, R2, R3, R4, R5 | Skink |
| <i>Ctenophorus nuchalis</i> | Central netted ground-dragon | 2196 | R1, R2, R3, R4, R5, Companion | Dragon |
| <i>Ctenophorus pictus</i> | Painted ground-dragon | 2199 | R1, R2, R3, R4, R5 | Dragon |
| <i>Ctenotus regius</i> | Pale-rumped ctenotus | 2374 | R1, R2, R3, R4, R5 | Skink |
| <i>Ctenotus robustus</i> | Robust ctenotus | 2375 | R1, R2, R3, R4, R5 | Skink |
| <i>Ctenotus taeniolatus</i> | Copper-tailed ctenotus | 2386 | R1, R2, R3, R4, R5 | Skink |
| <i>Cyclodomorphus casuarinae</i> | She-oak slender bluetongue | 2574 | R1, R2, R3, R4, R5, Companion | Skink |
| <i>Cyclodomorphus gerrardii</i> | Pink-tongued skink | 2575 | R1, R2, R3, R4, R5, Companion | Skink |
| <i>Cyclodomorphus michaeli</i> | Mainland she-oak skink | 2866 | R1, R2, R3, R4, R5, Companion | Skink |
| <i>Delma tincta</i> | Excitable delma | 2165 | R1, R2, R3, R4, R5 | Legless lizard |
| <i>Demansia psammophis</i> | Yellow-faced whipsnake | 2655 | R1, R2, R3, R4, R5 | Elapidae |

NSW Native Animal Keeper Species List 2016

Reptiles

| Scientific name | Common name | Species code | Applicable to licence class | Species group |
|------------------------------------|---------------------------------|--------------|----------------------------------|-----------------|
| <i>Dendrelaphis punctulatus</i> | Green tree snake | 2633 | R1, R2, R3, R4, R5 | Colubridae |
| <i>Denisonia devisi</i> | De vis's banded snake | 2660 | R1, R2, R3, R4, R5 | Elapidae |
| <i>Diplodactylus steindachneri</i> | Box-patterned gecko | 2071 | R1, R2, R3, R4, R5 | Gecko |
| <i>Diplodactylus tessellatus</i> | Tesselated gecko | 2076 | R1, R2, R3, R4, R5 | Gecko |
| <i>Diplodactylus vittatus</i> | Eastern stone gecko | 2077 | R1, R2, R3, R4, R5 | Gecko |
| <i>Diporiphora australis</i> | Eastern two-line dragon | 2223 | R1, R2, R3, R4, R5 | Dragon |
| <i>Drysdalia coronoides</i> | White-lipped snake | 2665 | R1, R2, R3, R4, R5 | Elapidae |
| <i>Drysdalia rhodogaster</i> | Mustard-bellied snake | 2805 | R1, R2, R3, R4, R5 | Elapidae |
| <i>Egernia cunninghami</i> | Cunningham's spiny-tailed skink | 2408 | R1, R2, R3, R4, R5 | Skink |
| <i>Egernia frerei</i> | Major skink | 2411 | R1, R2, R3, R4, R5 | Skink |
| <i>Egernia hosmeri</i> | Hosmer's spiny-tailed skink | 2412 | R1, R2, R3, R4, R5 | Skink |
| <i>Egernia inornata</i> | Unadorned desert-skink | 2413 | R1, R2, R3, R4, R5 | Skink |
| <i>Egernia kingii</i> | King's skink | 2414 | R1, R2, R3, R4, R5 | Skink |
| <i>Egernia major</i> | Land mullet | 2417 | R1, R2, R3, R4, R5 | Skink |
| <i>Egernia modesta</i> | Eastern ranges rock-skink | 2419 | R1, R2, R3, R4, R5 | Skink |
| <i>Egernia saxatilis</i> | Black crevice-skink | 2425 | R1, R2, R3, R4, R5 | Skink |
| <i>Egernia stokesii</i> | Gidgee spiny-tailed skink | 2427 | R1, R2, R3, R4, R5 | Skink |
| <i>Egernia striolata</i> | Tree-crevice skink | 2429 | R1, R2, R3, R4, R5 | Skink |
| <i>Egernia whitii</i> | White's rock-skink | 2430 | R1, R2, R3, R4, R5 | Skink |
| <i>Elseya dentata</i> | Northern snapping turtle | 2028 | R1, R2, R3, R4, R5, Companion | Turtle/tortoise |

NSW Native Animal Keeper Species List 2016

Reptiles

| Scientific name | Common name | Species code | Applicable to licence class | Species group |
|------------------------------------|------------------------------------|--------------|----------------------------------|-----------------|
| <i>Eiseya latisternum</i> | Saw-shelled turtle | 2029 | R1, R2, R3, R4, R5, Companion | Turtle/tortoise |
| <i>Elusor macrurus</i> | Mary river turtle | 2776 | R1, R2, R3, R4, R5, Companion | Turtle/tortoise |
| <i>Emydura macquarii</i> | Murray short-necked turtle | 2034 | R1, R2, R3, R4, R5, Companion | Turtle/tortoise |
| <i>Emydura macquarii dharra</i> | Macleay river turtle | 2953 | R1, R2, R3, R4, R5, Companion | Turtle/tortoise |
| <i>Emydura macquarii dharuk</i> | Sydney basin turtle | 2955 | R1, R2, R3, R4, R5, Companion | Turtle/tortoise |
| <i>Emydura macquarii emmotti</i> | Cooper creek turtle | 2949 | R1, R2, R3, R4, R5, Companion | Turtle/tortoise |
| <i>Emydura macquarii gunabarra</i> | Hunter river turtle | 2954 | R1, R2, R3, R4, R5, Companion | Turtle/tortoise |
| <i>Emydura macquarii krefftii</i> | Krefft's river turtle | 2033 | R1, R2, R3, R4, R5, Companion | Turtle/tortoise |
| <i>Emydura macquarii signata</i> | Brisbane river short-necked turtle | 2035 | R1, R2, R3, R4, R5, Companion | Turtle/tortoise |
| <i>Eremiascincus fasciolatus</i> | Narrow-banded sand-swimmer | 2437 | R1, R2, R3, R4, R5 | Skink |
| <i>Eremiascincus richardsonii</i> | Broad-banded sand-swimmer | 2438 | R1, R2, R3, R4, R5 | Skink |
| <i>Eulamprus murrayi</i> | Blue-spectacled forest skink | 2552 | R1, R2, R3, R4, R5, Companion | Skink |
| <i>Eulamprus quoyii</i> | Eastern water-skink | 2557 | R1, R2, R3, R4, R5, Companion | Skink |
| <i>Eulamprus tenuis</i> | Bar-sided forest-skink | 2559 | R1, R2, R3, R4, R5, Companion | Skink |

NSW Native Animal Keeper Species List 2016

Reptiles

| Scientific name | Common name | Species code | Applicable to licence class | Species group |
|----------------------------------|------------------------------|--------------|----------------------------------|----------------|
| <i>Furina diadema</i> | Red-naped snake | 2669 | R1, R2, R3, R4, R5 | Elapidae |
| <i>Furina ornata</i> | Orange-naped snake | 2807 | R1, R2, R3, R4, R5 | Elapidae |
| <i>Gehyra australis</i> | Top-end dtella | 2085 | R1, R2, R3, R4, R5 | Gecko |
| <i>Gehyra dubia</i> | Dubious dtella | 2082 | R1, R2, R3, R4, R5 | Gecko |
| <i>Gehyra variegata</i> | Varied dtella | 2092 | R1, R2, R3, R4, R5 | Gecko |
| <i>Hemiaspis signata</i> | Marsh snake | 2674 | R1, R2, R3, R4, R5 | Elapidae |
| <i>Heteronotia binoei</i> | Prickly gecko | 2105 | R1, R2, R3, R4, R5 | Gecko |
| <i>Heteronotia spelea</i> | Cave prickly gecko | 2106 | R1, R2, R3, R4, R5 | Gecko |
| <i>Hypsilurus spinipes</i> | Southern forest dragon | 2245 | R1, R2, R3, R4, R5, Companion | Dragon |
| <i>Lampropholis delicata</i> | Dark-flecked garden sunskink | 2450 | R1, R2, R3, R4, R5 | Skink |
| <i>Lampropholis guichenoti</i> | Pale-flecked garden sunskink | 2451 | R1, R2, R3, R4, R5 | Skink |
| <i>Lerista bougainvillii</i> | South-eastern slider | 2475 | R1, R2, R3, R4, R5 | Skink |
| <i>Lialis burtonis</i> | Burton's snake-lizard | 2170 | R1, R2, R3, R4, R5 | Legless lizard |
| <i>Liasis fuscus</i> | Water python | 2620 | R1,R2,R3,R4,R5, Companion | Python |
| <i>Liasis olivaceus</i> | Olive python | 2621 | R1, R2, R3, R4, R5, Companion | Python |
| <i>Liasis stimsoni</i> | Stimson's python | 2819 | R1, R2, R3, R4, R5, Companion | Python |
| <i>Lophognathus burnsi</i> | Burns' dragon | 2822 | R1, R2, R3, R4, R5 | Dragon |
| <i>Lophognathus gilberti</i> | Gilbert's lashtail | 2246 | R1, R2, R3, R4, R5 | Dragon |
| <i>Lophognathus longirostris</i> | Long-snouted lashtail | 2247 | R1, R2, R3, R4, R5 | Dragon |
| <i>Lophognathus temporalis</i> | Swamplands lashtail | 2248 | R1, R2, R3, R4, R5 | Dragon |

NSW Native Animal Keeper Species List 2016

| <h2>Reptiles</h2> | | | | |
|--|--|--------------|----------------------------------|-----------------|
| Scientific name | Common name | Species code | Applicable to licence class | Species group |
| <i>Lucasium damaeum</i> | Beaded gecko | 2109 | R1, R2, R3, R4, R5 | Gecko |
| <i>Macrochelodina rugosa</i> | Northern snake-necked turtle | 2020 | R1, R2, R3, R4, R5, Companion | Turtle/tortoise |
| <i>Menetia greyii</i> | Common dwarf skink | 2519 | R1, R2, R3, R4, R5 | Skink |
| <i>Morelia bredli</i> | Centralian carpet python | 2623 | R1, R2, R3, R4, R5, Companion | Python |
| <i>Morelia spilota cheyni</i> | Jungle carpet python | 5094 | R1, R2, R3, R4, R5, Companion | Python |
| <i>Morelia spilota imbricata</i> | Western carpet python | 5098 | R1, R2, R3, R4, R5, Companion | Python |
| <i>Morelia spilota mcdowelli</i> | Eastern carpet python | 5095 | R1, R2, R3, R4, R5, Companion | Python |
| <i>Morelia spilota metcalfei</i> | Murray/darling carpet python | 5097 | R1, R2, R3, R4, R5, Companion | Python |
| <i>Morelia spilota spilota</i> | Diamond python | 5096 | R1, R2, R3, R4, R5, Companion | Python |
| <i>Morelia spilota unknown</i> | Carpet/diamond python sub species unknown | 2625 | R1, R2, R3, R4, R5, Companion | Python |
| <i>Morelia spilota variegata</i> | Top end carpet python | 5099 | R1, R2, R3, R4, R5, Companion | Python |
| <i>Morelia spilota cheynei x Morelia spilota variegata</i> | Jungle/top end python hybrid | T903 | R1, R2, R3, R4, R5 | Python |
| <i>Morelia spilota mcdowelli x Morelia bredli</i> | Coastal/Centralian carpet python hybrid | T164 | R1, R2, R3, R4, R5, Companion | Python |
| <i>Morelia spilota mcdowelli x Morelia cheynei</i> | Coastal/jungle carpet python hybrid | T167 | R1, R2, R3, R4, R5, Companion | Python |

NSW Native Animal Keeper Species List 2016

| <h2>Reptiles</h2> | | | | |
|---|---|--------------|----------------------------------|---------------|
| Scientific name | Common name | Species code | Applicable to licence class | Species group |
| <i>Morelia spilota spilota x Morelia bredli</i> | Diamond/Centralian carpet python hybrid | T165 | R1, R2, R3, R4, R5, Companion | Python |
| <i>Morelia spilota spilota x Morelia cheynei</i> | Diamond/jungle python hybrid | T170 | R1, R2, R3, R4, R5, Companion | Python |
| <i>Morelia spilota spilota x Morelia mcdowellii</i> | Carpet/diamond python | T171 | R1, R2, R3, R4, R5, Companion | Python |
| <i>Morelia spilota spilota x Morelia mcdowellii</i> | Diamond/coastal carpet python hybrid | T166 | R1, R2, R3, R4, R5, Companion | Python |
| <i>Morelia spilota spilota x Morelia metcalfei</i> | Diamond/Murray/Darling carpet python hybrid | T185 | R1, R2, R3, R4, R5, Companion | Python |
| <i>Morethia boulengeri</i> | South-eastern morethia skink | 2526 | R1,R2,R3,R4,R5 | Skink |
| <i>Nephrurus amyaee</i> | Centralian rough knob-tail gecko | 2777 | R1, R2, R3, R4, R5, Companion | Gecko |
| <i>Nephrurus asper</i> | Rough knob-tail gecko | 2110 | R1, R2, R3, R4, R5, Companion | Gecko |
| <i>Nephrurus laevis</i> | Smooth knob-tail gecko | 2111 | R1, R2, R3, R4, R5, Companion | Gecko |
| <i>Nephrurus levis</i> | Three-lined knob-tail gecko | 2112 | R1, R2, R3, R4, R5, Companion | Gecko |
| <i>Nephrurus levis levis</i> | Smooth knob-tail gecko | 2962 | R1, R2, R3, R4, R5, Companion | Gecko |
| <i>Nephrurus levis occidentalis</i> | – | 2963 | R1, R2, R3, R4, R5, Companion | Gecko |
| <i>Nephrurus levis pilbarensis</i> | Smooth knob-tail gecko | 2964 | R1, R2, R3, R4, R5, Companion | Gecko |

NSW Native Animal Keeper Species List 2016

| <h2>Reptiles</h2> | | | | |
|---|---------------------------------|--------------|----------------------------------|---------------|
| Scientific name | Common name | Species code | Applicable to licence class | Species group |
| <i>Nephrurus sheai</i> | Kimberley rough knob-tail gecko | 2778 | R1, R2, R3, R4, R5, Companion | Gecko |
| <i>Nephrurus stellatus</i> | Stellate knob-tail gecko | 2113 | R1, R2, R3, R4, R5, Companion | Gecko |
| <i>Nephrurus wheeleri</i> | Banded knob-tail gecko | 2115 | R1, R2, R3, R4, R5, Companion | Gecko |
| <i>Oedura castelnaui</i> | Northern velvet gecko | 2116 | R1, R2, R3, R4, R5, Companion | Gecko |
| <i>Oedura coggeri</i> | Northern spotted velvet gecko | 2117 | R1, R2, R3, R4, R5 | Gecko |
| <i>Oedura filicipoda</i> | Fringe-toed velvet gecko | 2131 | R1, R2, R3, R4, R5 | Gecko |
| <i>Oedura lesueurii</i> | Lesueur's velvet gecko | 2118 | R1, R2, R3, R4, R5 | Gecko |
| <i>Oedura marmorata</i> | Marbled velvet gecko | 2119 | R1, R2, R3, R4, R5 | Gecko |
| <i>Oedura monilis</i> | Ocellated velvet gecko | 2120 | R1, R2, R3, R4, R5 | Gecko |
| <i>Oedura robusta</i> | Robust velvet gecko | 2123 | R1, R2, R3, R4, R5 | Gecko |
| <i>Oedura tryoni</i> | Southern spotted velvet gecko | 2124 | R1, R2, R3, R4, R5 | Gecko |
| <i>Parasuta dwyeri</i> | Variable black-naped snake | 2726 | R1, R2, R3, R4, R5 | Elapidae |
| <i>Phyllurus platurus</i> | Broad-tailed gecko | 2129 | R1, R2, R3, R4, R5, Companion | Gecko |
| <i>Physignathus lesueurii</i> | Eastern water dragon | 2252 | R1, R2, R3, R4, R5, Companion | Dragon |
| <i>Physignathus lesueurii lesueurii</i> | Eastern water dragon | 5075 | R1, R2, R3, R4, R5, Companion | Dragon |
| <i>Physignathus lesueurii howitti</i> | Gippsland water dragon | 5076 | R1, R2, R3, R4, R5, Companion | Dragon |

NSW Native Animal Keeper Species List 2016

| <h2>Reptiles</h2> | | | | |
|--|---------------------------------------|--------------|----------------------------------|----------------|
| Scientific name | Common name | Species code | Applicable to licence class | Species group |
| <i>Pogona barbata</i> | Eastern bearded dragon | 2177 | R1, R2, R3, R4, R5, Companion | Dragon |
| <i>Pogona barbata x Pogona vitticeps</i> | Eastern/central bearded dragon hybrid | T163 | R1, R2, R3, R4, R5, Companion | Dragon |
| <i>Pogona henrylawsoni</i> | Black-soil bearded dragon | 2775 | R1, R2, R3, R4, R5, Companion | Dragon |
| <i>Pogona minima</i> | Western bearded dragon | 2191 | R1, R2, R3, R4, R5, Companion | Dragon |
| <i>Pogona minor</i> | Western bearded dragon | 2192 | R1, R2, R3, R4, R5, Companion | Dragon |
| <i>Pogona mitchelli</i> | North-west bearded dragon | 2193 | R1, R2, R3, R4, R5, Companion | Dragon |
| <i>Pogona vitticeps</i> | Central bearded dragon | 2204 | R1, R2, R3, R4, R5, Companion | Dragon |
| <i>Pygopus lepidopodus</i> | Southern scaly-foot | 2174 | R1, R2, R3, R4, R5 | Legless lizard |
| <i>Pygopus nigriceps</i> | Western scaly-foot | 2175 | R1, R2, R3, R4, R5 | Legless lizard |
| <i>Pygopus schraderi</i> | Eastern hooded scaly-foot | 2911 | R1, R2, R3, R4, R5 | Legless lizard |
| <i>Rankinia diemensis</i> | Mountain heath dragon | 2182 | R1, R2, R3, R4, R5 | Dragon |
| <i>Saltuarius cornutus</i> | Northern leaf-tail gecko | 2128 | R1, R2, R3, R4, R5, Companion | Gecko |
| <i>Saltuarius salebrosus</i> | Rough-throated leaf-tail gecko | 2130 | R1, R2, R3, R4, R5, Companion | Gecko |
| <i>Saltuarius swaini</i> | Southern leaf-tailed gecko | 2687 | R1, R2, R3, R4, R5, Companion | Gecko |
| <i>Stegonotus cucullatus</i> | Slaty-grey snake | 2638 | R1, R2, R3, R4, R5 | Colubridae |

NSW Native Animal Keeper Species List 2016

Reptiles

| Scientific name | Common name | Species code | Applicable to licence class | Species group |
|--|------------------------------------|--------------|----------------------------------|-----------------|
| <i>Strophurus ciliaris</i> | Northern spiny-tailed gecko | 2053 | R1, R2, R3, R4, R5 | Gecko |
| <i>Strophurus intermedius</i> | Southern spiny-tailed gecko | 2059 | R1, R2, R3, R4, R5 | Gecko |
| <i>Strophurus taenicauda</i> | Golden spiny-tailed gecko | 2075 | R1, R2, R3, R4, R5, Companion | Gecko |
| <i>Strophurus williamsi</i> | Eastern spiny-tailed gecko | 2078 | R1,R2,R3,R4,R5 | Gecko |
| <i>Tiliqua nigrolutea</i> | Blotched bluetongue | 2578 | R1, R2, R3, R4, R5, Companion | Skink |
| <i>Tiliqua rugosa</i> | Shingleback lizard | 2583 | R1, R2, R3, R4, R5, Companion | Skink |
| <i>Tiliqua scincoides</i> | Common bluetongue | 2580 | R1, R2, R3, R4, R5, Companion | Skink |
| <i>Tiliqua scincoides x Tiliqua nigrolutea</i> | Eastern/blotched bluetongue hybrid | T168 | R1, R2, R3, R4, R5, Companion | Skink |
| <i>Underwoodisaurus milii</i> | Thick-tailed gecko | 2138 | R1, R2, R3, R4, R5, Companion | Gecko |
| <i>Varanus acanthurus</i> | Ocellate ridge-tailed monitor | 2263 | R1, R2, R3, R4, R5, Companion | Monitor |
| <i>Varanus gilleni</i> | Pygmy mulga monitor | 2268 | R1, R2, R3, R4, R5, Companion | Monitor |
| <i>Varanus gouldii</i> | Sand monitor | 2271 | R1, R2, R3, R4, R5, Companion | Monitor |
| <i>Varanus tristis</i> | Black-tailed monitor | 2282 | R1, R2, R3, R4, R5, Companion | Monitor |
| <i>Acrochordus arafurae</i> | Arafura file snake | 2627 | R2, R3, R4, R5 | File and blind |
| <i>Carettochelys insculpta</i> | Pig-nosed turtle | 2014 | R2, R3, R4, R5 | Turtle/tortoise |

NSW Native Animal Keeper Species List 2016

Reptiles

| Scientific name | Common name | Species code | Applicable to licence class | Species group |
|---------------------------------------|----------------------------------|--------------|-----------------------------|-----------------|
| <i>Carlia coensis</i> | Coen rainbow-skink | 2305 | R2, R3, R4, R5 | Skink |
| <i>Carphodactylus laevis</i> | Chameleon gecko | 2046 | R2, R3, R4, R5 | Gecko |
| <i>Chelodina steindachneri</i> | Flat-shelled snake-necked turtle | 2021 | R2, R3, R4, R5 | Turtle/tortoise |
| <i>Chlamydosaurus kingii</i> | Frilled lizard | 2221 | R2, R3, R4, R5 | Dragon |
| <i>Ctenophorus caudicinctus</i> | Ring-tailed bicycle-dragon | 2178 | R2, R3, R4, R5 | Dragon |
| <i>Ctenophorus cristatus</i> | Crested bicycle-dragon | 2180 | R2, R3, R4, R5 | Dragon |
| <i>Ctenophorus decresii</i> | Tawny crevice-dragon | 2181 | R2, R3, R4, R5 | Dragon |
| <i>Ctenophorus fionni</i> | Peninsula crevice-dragon | 2184 | R2, R3, R4, R5 | Dragon |
| <i>Ctenophorus isolepis</i> | Military sand-dragon | 2187 | R2, R3, R4, R5 | Dragon |
| <i>Ctenophorus reticulatus</i> | Western netted ground-dragon | 2200 | R2, R3, R4, R5 | Dragon |
| <i>Ctenophorus vadrappa</i> | Red-barred crevice-dragon | 2203 | R2, R3, R4, R5 | Dragon |
| <i>Ctenotus leonhardii</i> | Leonhardi's ctenotus | 2365 | R2, R3, R4, R5 | Skink |
| <i>Ctenotus pantherinus</i> | Leopard ctenotus | 2370 | R2, R3, R4, R5 | Skink |
| <i>Ctenotus pantherinus ocellifer</i> | Leopard ctenotus | 2993 | R2, R3, R4, R5 | Skink |
| <i>Ctenotus saxatilis</i> | Stony-soil ctenotus | 2377 | R2, R3, R4, R5 | Skink |
| <i>Cyrtodactylus louisianensis</i> | Ring-tailed gecko | 2049 | R2, R3, R4, R5 | Gecko |
| <i>Delma impar</i> | Striped legless lizard | 2159 | R2, R3, R4, R5 | Legless lizard |
| <i>Delma inornata</i> | Patternless delma | 2160 | R2, R3, R4, R5 | Legless lizard |
| <i>Demansia papuensis</i> | Greater black whipsnake | 2654 | R2, R3, R4, R5 | Elapidae |
| <i>Dendrelaphis calligastra</i> | Northern tree snake | 2632 | R2, R3, R4, R5 | Colubridae |
| <i>Diplodactylus byrnei</i> | Gibber gecko | 2052 | R2, R3, R4, R5 | Gecko |
| <i>Diplodactylus conspicillatus</i> | Fat-tailed diplodactylus | 2054 | R2, R3, R4, R5 | Gecko |

NSW Native Animal Keeper Species List 2016

Reptiles

| Scientific name | Common name | Species code | Applicable to licence class | Species group |
|--------------------------------------|------------------------------|--------------|-----------------------------|-----------------|
| <i>Diplodactylus elderi</i> | Jewelled gecko | 2055 | R2, R3, R4, R5 | Gecko |
| <i>Diplodactylus galeatus</i> | Helmeted gecko | 2057 | R2, R3, R4, R5 | Gecko |
| <i>Diplodactylus granariensis</i> | Wheat-belt stone gecko | 2058 | R2, R3, R4, R5 | Gecko |
| <i>Diplodactylus stenodactylus</i> | Crowned gecko | 2072 | R2, R3, R4, R5 | Gecko |
| <i>Diporiphora bennettii</i> | Robust two-line dragon | 2224 | R2, R3, R4, R5 | Dragon |
| <i>Diporiphora bilineata</i> | Northern two-line dragon | 2225 | R2, R3, R4, R5 | Dragon |
| <i>Diporiphora magna</i> | Yellow-sided two-line dragon | 2229 | R2, R3, R4, R5 | Dragon |
| <i>Diporiphora winneckei</i> | Canegrass two-line dragon | 2235 | R2, R3, R4, R5 | Dragon |
| <i>Egernia depressa</i> | Pygmy spiny-tailed skink | 2409 | R2, R3, R4, R5 | Skink |
| <i>Egernia margaretae margaretae</i> | Centralian Ranges rock-skink | 5006 | R2, R3, R4, R5 | Skink |
| <i>Egernia margaretae personata</i> | Flinder's Ranges rock-skink | 5007 | R2, R3, R4, R5 | Skink |
| <i>Egernia mcphreei</i> | Eastern crevice skink | 2213 | R2, R3, R4, R5 | Skink |
| <i>Egernia pulchra</i> | South-western rock-skink | 2422 | R2, R3, R4, R5 | Skink |
| <i>Egernia rugosa</i> | Yakka skink | 2424 | R2, R3, R4, R5 | Skink |
| <i>Egernia striata</i> | Nocturnal desert-skink | 2428 | R2, R3, R4, R5 | Skink |
| <i>Elseya albagula</i> | Southern snapping turtle | 5135 | R2, R3, R4, R5 | Turtle/tortoise |
| <i>Elseya belli</i> | Bell's turtle | 2825 | R2, R3, R4, R5 | Turtle/tortoise |
| <i>Elseya irwini</i> | Irwin's turtle | 2827 | R2, R3, R4, R5 | Turtle/tortoise |
| <i>Elseya lavarackorum</i> | Gulf snapping turtle | 2828 | R2, R3, R4, R5 | Turtle/tortoise |
| <i>Emydura australis</i> | North-west red-faced turtle | 2830 | R2, R3, R4, R5 | Turtle/tortoise |
| <i>Emydura subglobosa</i> | Painted short-necked turtle | 2036 | R2, R3, R4, R5 | Turtle/tortoise |
| <i>Emydura tanybaraga</i> | Northern yellow-faced turtle | 2831 | R2, R3, R4, R5 | Turtle/tortoise |

NSW Native Animal Keeper Species List 2016

Reptiles

| Scientific name | Common name | Species code | Applicable to licence class | Species group |
|-------------------------------------|--------------------------------------|--------------|-----------------------------|-----------------|
| <i>Emydura victoriae</i> | Northern red-faced turtle | 2037 | R2, R3, R4, R5 | Turtle/tortoise |
| <i>Enhydryis polylepis</i> | Macleay's water snake | 2634 | R2, R3, R4, R5 | Colubridae |
| <i>Eulamprus martini</i> | Dark barsided skink | 2720 | R2, R3, R4, R5 | Skink |
| <i>Eulamprus tryoni</i> | Tryon's skink | 2871 | R2, R3, R4, R5 | Skink |
| <i>Eulamprus tympanum</i> | Cool-temperate water-skink | 2561 | R2, R3, R4, R5 | Skink |
| <i>Gehyra montium</i> | Centralian dtella | 2083 | R2, R3, R4, R5 | Gecko |
| <i>Gnypetoscincus queenslandiae</i> | Prickly forest skink | 2584 | R2, R3, R4, R5 | Skink |
| <i>Hypsilurus boydii</i> | Boyd's forest dragon | 2243 | R2, R3, R4, R5 | Dragon |
| <i>Leiopython albertisii</i> | White-lipped python | 2617 | R2, R3, R4, R5 | Python |
| <i>Lepidodactylus lugubris</i> | Mourning chained gecko | 2107 | R2, R3, R4, R5 | Gecko |
| <i>Macrochelodina burrungandjii</i> | Sandstone long-necked turtle | 2906 | R2, R3, R4, R5 | Turtle/tortoise |
| <i>Macrochelodina expansa</i> | Broad-shelled snake-necked turtle | 2016 | R2, R3, R4, R5 | Turtle/tortoise |
| <i>Morelia amethystina</i> | Amethyst python | 2618 | R2, R3, R4, R5 | Python |
| <i>Morelia carinata</i> | Rough-scaled python | 2624 | R2, R3, R4, R5 | Python |
| <i>Morelia viridis</i> | Green python (Australian provenance) | 2616 | R2, R3, R4, R5 | Python |
| <i>Oedura gemmata</i> | Dotted velvet gecko | 2132 | R2, R3, R4, R5 | Gecko |
| <i>Pogona microlepidota</i> | Kimberley bearded dragon | 2190 | R2, R3, R4, R5 | Dragon |
| <i>Pseudothecadactylus lindneri</i> | Giant cave gecko | 2135 | R2, R3, R4, R5 | Gecko |
| <i>Ramphotyphlops nigrescens</i> | Blackish blind snake | 2599 | R2, R3, R4, R5 | File and blind |
| <i>Rheodytes leukops</i> | Fitzroy river turtle | 2045 | R2, R3, R4, R5 | Turtle/tortoise |
| <i>Rhynchoedura ornata</i> | Beaked gecko | 2137 | R2, R3, R4, R5 | Gecko |
| <i>Saltuarius wyberba</i> | Granite leaf-tailed gecko | 2851 | R2, R3, R4, R5 | Gecko |

NSW Native Animal Keeper Species List 2016

Reptiles

| Scientific name | Common name | Species code | Applicable to licence class | Species group |
|--------------------------------------|------------------------------------|--------------|-----------------------------|---------------|
| <i>Strophurus spinigerus</i> | South-west spiny-tailed gecko | 2069 | R2, R3, R4, R5 | Gecko |
| <i>Tiliqua multifasciata</i> | Centralian blue-tongued lizard | 2577 | R2, R3, R4, R5 | Skink |
| <i>Tiliqua occipitalis</i> | Western blue-tongued lizard | 2579 | R2, R3, R4, R5 | Skink |
| <i>Tiliqua scincoides intermedia</i> | Northern blue-tongue lizard | 5057 | R2, R3, R4, R5 | Skink |
| <i>Tropidonophis mairii</i> | Keelback snake | 2629 | R2, R3, R4, R5 | Colubridae |
| <i>Tympanocryptis cephalus</i> | Blotch-tailed earless dragon | 2253 | R2, R3, R4, R5 | Dragon |
| <i>Tympanocryptis lineata</i> | Lined earless dragon | 2255 | R2, R3, R4, R5 | Dragon |
| <i>Tympanocryptis tetraporophora</i> | Long-tailed earless dragon | 2257 | R2, R3, R4, R5 | Dragon |
| <i>Underwoodisaurus sphyrurus</i> | Border thick-tailed gecko | 2139 | R2, R3, R4, R5 | Gecko |
| <i>Varanus baritji</i> | Black-spotted ridge-tailed monitor | 2733 | R2, R3, R4, R5 | Monitor |
| <i>Varanus brevicauda</i> | Short-tailed pygmy monitor | 2264 | R2, R3, R4, R5 | Monitor |
| <i>Varanus caudolineatus</i> | Line-tailed pygmy monitor | 2265 | R2, R3, R4, R5 | Monitor |
| <i>Varanus giganteus</i> | Perentie | 2267 | R2, R3, R4, R5 | Monitor |
| <i>Varanus glauerti</i> | Kimberley rock monitor | 2269 | R2, R3, R4, R5 | Monitor |
| <i>Varanus indicus</i> | Mangrove monitor | 2272 | R2, R3, R4, R5 | Monitor |
| <i>Varanus kingorum</i> | Pygmy rock monitor | 2284 | R2, R3, R4, R5 | Monitor |
| <i>Varanus mertensi</i> | Mertens's water monitor | 2273 | R2, R3, R4, R5 | Monitor |
| <i>Varanus mitchelli</i> | Mitchell's water monitor | 2274 | R2, R3, R4, R5 | Monitor |
| <i>Varanus panoptes</i> | Yellow-spotted monitor | 2285 | R2, R3, R4, R5 | Monitor |
| <i>Varanus primordius</i> | Northern blunt-spined monitor | 2276 | R2, R3, R4, R5 | Monitor |
| <i>Varanus rosenbergi</i> | Rosenberg's goanna | 2287 | R2, R3, R4, R5 | Monitor |
| <i>Varanus scalaris</i> | Spotted tree monitor | 2281 | R2, R3, R4, R5 | Monitor |

NSW Native Animal Keeper Species List 2016

Reptiles

| Scientific name | Common name | Species code | Applicable to licence class | Species group |
|---|--|--------------|-----------------------------|---------------|
| <i>Varanus spenceri</i> | Spencer's monitor | 2279 | R2, R3, R4, R5 | Monitor |
| <i>Varanus storri</i> | Storr's monitor | 2280 | R2, R3, R4, R5 | Monitor |
| <i>Varanus varius</i> | Lace monitor | 2283 | R2, R3, R4, R5 | Monitor |
| <i>Hoplocephalus bitorquatus</i> | Pale-headed snake | 2675 | R3, R4, R5 | Elapidae |
| <i>Hoplocephalus bitorquatus</i> x <i>Hoplocephalus stephensii</i> | Pale-headed/stephens' banded snake hybrid | T161 | R3, R4, R5 | Elapidae |
| <i>Hoplocephalus bungaroides</i> | Broad-headed snake | 2676 | R3, R4, R5 | Elapidae |
| <i>Hoplocephalus stephensii</i> | Stephens' banded snake | 2677 | R3, R4, R5 | Elapidae |
| <i>Parasuta spectabilis</i> | Spectacled hooded snake | 2813 | R3, R4, R5 | Elapidae |
| <i>Parasuta spectabilis spectabilis</i> | | 5112 | R3, R4, R5 | Elapidae |
| <i>Pseudechis collettii</i> | Collett's snake | 2691 | R3, R4, R5 | Elapidae |
| <i>Pseudechis porphyriacus</i> | Red-bellied black snake | 2693 | R3, R4, R5 | Elapidae |
| <i>Suta flagellum</i> | Little whip snake | 2727 | R3, R4, R5 | Elapidae |
| <i>Notechis scutatus</i> | Mainland tiger snake | 2681 | R4, R5 | Elapidae |
| <i>Vermicella annulata</i> | Eastern bandy-bandy | 2734 | R3, R4, R5 | Elapidae |
| <i>Acanthophis antarcticus</i> | Southern death adder | 2640 | R4, R5 | Elapidae |
| <i>Acanthophis praelongus</i> | Northern death adder | 2804 | R4, R5 | Elapidae |
| <i>Acanthophis Pyrrhus</i> | Desert death adder | 2641 | R4, R5 | Elapidae |
| <i>Acanthophis wellsei</i> | Pilbara death adder | 2833 | R4, R5 | Elapidae |
| <i>Austrelaps ramsayi</i> | Highlands copperhead | 2615 | R4, R5 | Elapidae |
| <i>Austrelaps superbus</i> | Lowlands copperhead | 2642 | R4, R5 | Elapidae |
| <i>Cryptophis nigrescens</i> | Eastern small-eyed snake | 2650 | R4, R5 | Elapidae |

Reptiles

| Scientific name | Common name | Species code | Applicable to licence class | Species group |
|---------------------------------|----------------------|--------------|-----------------------------|---------------|
| <i>Denisonia maculata</i> | Ornamental snake | 2662 | R4, R5 | Elapidae |
| <i>Notechis ater</i> | Black tiger snake | 2680 | R4, R5 | Elapidae |
| <i>Pseudechis affinis</i> | Dugite | 2694 | R4, R5 | Elapidae |
| <i>Pseudechis australis</i> | Mulga snake | 2690 | R4, R5 | Elapidae |
| <i>Pseudechis butleri</i> | Spotted mulga snake | 2814 | R4, R5 | Elapidae |
| <i>Pseudechis guttatus</i> | Spotted black snake | 2692 | R4, R5 | Elapidae |
| <i>Pseudonaja ingrami</i> | Ingram's brown snake | 2696 | R4, R5 | Elapidae |
| <i>Pseudonaja modesta</i> | Ringed brown snake | 2697 | R4, R5 | Elapidae |
| <i>Pseudonaja nuchalis</i> | Mulga | 2698 | R4, R5 | Elapidae |
| <i>Suta suta</i> | Curl snake | 2722 | R4, R5 | Elapidae |
| <i>Oxyuranus microlepidotus</i> | Fierce snake | 2689 | R5 | Elapidae |
| <i>Oxyuranus scutellatus</i> | Taipan | 2688 | R5 | Elapidae |
| <i>Pseudonaja guttata</i> | Speckled brown snake | 2695 | R5 | Elapidae |
| <i>Pseudonaja textilis</i> | Eastern brown snake | 2699 | R5 | Elapidae |
| <i>Pseudechis weigeli</i> | – | T1041 | R5 | Elapidae |
| <i>Tropidechis carinatus</i> | Rough-scaled snake | 2723 | R5 | Elapidae |

NSW Native Animal Keeper Species List 2016

Exempt species

A certificate or licence is not required to buy, sell (including commercial trade through pet shops) or hold these 41 species

| | | | |
|---|--|--|---|
| <i>Cacatua galerita</i> Sulphur-crested cockatoo | <i>Cacatua pastinator butleri</i> Western corella | <i>Cacatua roseicapilla</i> Galah | <i>Cacatua sanguinea</i> Little corella |
| <i>Cacatua tenuirostris</i> Long-billed corella | <i>Nymphicus hollandicus</i> Cockatiel | <i>Trichoglossus chlorolepidotus</i> Scaly-breasted lorikeet | <i>Trichoglossus haematodus</i> Rainbow lorikeet |
| <i>Trichoglossus rubritorquis</i> Red-collared lorikeet | <i>Glossopsitta concinna</i> Musk lorikeet | <i>Polytelis alexandrae</i> Princess parrot | <i>Platycercus adscitus</i> Pale-headed rosella |
| <i>Platycercus elegans adalaidae</i> Adelaide rosella | <i>Platycercus elegans flaveolus</i> Yellow rosella | <i>Platycercus eximius</i> Eastern rosella | <i>Platycercus icterotis</i> Western rosella |
| <i>Purpureicephalus spurius</i> Red-capped parrot | <i>Barnardius zonarius semitorquatus</i> Twenty-eight parrot | <i>Barnardius zonarius zonarius</i> Port lincoln parrot | <i>Psephotus dissimilis</i> Hooded parrot |
| <i>Psephotus haematonotus</i> Red-rumped parrot | <i>Neopsephotus bourkii</i> Bourke's parrot | <i>Neophema elegans</i> Elegant parrot | <i>Neophema splendida</i> Scarlet-chested parrot |
| <i>Melopsittacus undulatus</i> Budgerigar | <i>Coturnix chinensis</i> King quail | <i>Coturnix pectoralis</i> Stubble quail | <i>Coturnix ypsilophora</i> Brown quail |
| <i>Turnix varia</i> Painted button-quail | <i>Turnix velox</i> Little button-quail | <i>Geopelia cuneata</i> Diamond dove | <i>Geopelia humeralis</i> Bar-shouldered dove |
| <i>Geopelia striata</i> Peaceful dove | <i>Phaps chalcoptera</i> Common bronzewing | <i>Ocyphaps lophotes</i> Crested pigeon | <i>Chalcophaps indica</i> Emerald dove |
| <i>Neochmia ruficauda</i> Star finch | <i>Emblema pictum</i> Painted finch | <i>Erythrura gouldiae</i> Gouldian finch | <i>Erythrura trichroa</i> Blue-faced parrot finch |
| <i>Taeiopygia guttata</i> Zebra finch | | | |

Keeping native animals as pets

Where can I find out about animal keeping?

The Office of Environment and Heritage recommends that native animal enthusiasts join a local animal keeper group that is relevant to their animal/s of interest. You will be able to share knowledge, experience and expertise with other keepers of similar native animals, trade animals and, perhaps, participate in field observation and research activities (Table 1).

Table 1: Names and location of some animal keeper groups in NSW.

| Group | Address | Website/Facebook page |
|---|---|--|
| Reptile and frog groups | | |
| Australian Herpetological Society | PO Box R79 Royal Exchange Sydney NSW 1225 | www.ahs.org.au |
| Australian Society of Herpetologists | | www.australiansocietyofherpetologists.org |
| Central Coast Herpetological Society | PO Box 9040 Wyoming NSW 2250 | www.ccherps.org.au/ |
| Hawkesbury Herpetological Society | PO Box 680 Penrith NSW 2751 | www.hawkesburyherps.com.au |
| Frog and Tadpole Study Group of NSW | PO Box 296 Rockdale NSW 2216 | www.fats.org.au |
| Macarthur Herpetological Society | PO Box 235 Narellan NSW 2567 | www.macarthurreptiles.com.au |
| North Coast Herpetological Group | PO Box 8006 Flynn's Beach NSW 2444 | www.facebook.com/pages/North-Coast-Herpetology-Group/298278363610498 |
| Orana Herpetological Society | PO Box 809 Mudgee NSW 2850 | www.snakyo.tripod.com |
| Shoalhaven Reptile Club | P.O Box 809 Nowra 2541 | www.shoalhavenreptileclub.com |
| Illawarra Reptile Society | PO Box 183 Albion Park NSW 2527 | www.illawarrareptilesociety.com.au |
| Bird groups | | |
| Associated Bird Keepers of Australia Inc | PO Box 41 Berry NSW 2535 | www.birdkeepers.com.au |
| Avicultural Society of NSW | PO Box 482 West Ryde NSW 1685 | www.aviculturalsocietynsw.org |
| The Canary and Cage Bird Federation of Australia Inc. | PO Box 230 Frenchs Forest NSW 1640 | |
| Parrot Society of Australia (NSW) Inc | PO Box 783 Seven Hills NSW 2147 | www.parrotsocietynsw.com/index.php/en |
| Mammal groups | | |
| The Australian Mammal Society | | www.australianmammals.org.au |

