



# **Proposed Horse Riding in Wilderness Amendments (2018) to Plans of Management**

**Far South Coast Escarpment Parks, Kosciuszko National Park and  
Mummel Gulf National Park and State Conservation Area**

© 2018 State of NSW and the Office of Environment and Heritage

With the exception of photographs, the State of NSW and Office of Environment and Heritage are pleased to allow this material to be reproduced in whole or in part for educational and non-commercial use, provided the meaning is unchanged and its source, publisher and authorship are acknowledged. Specific permission is required for the reproduction of photographs.

The Office of Environment and Heritage (OEH) has compiled this document in good faith, exercising all due care and attention. No representation is made about the accuracy, completeness or suitability of the information in this publication for any particular purpose. OEH shall not be liable for any damage which may occur to any person or organisation taking action or not on the basis of this publication. Readers should seek appropriate advice when applying the information to their specific needs.

All content in this publication is owned by OEH and is protected by Crown Copyright, unless credited otherwise. It is licensed under the [Creative Commons Attribution 4.0 International \(CC BY 4.0\)](#), subject to the exemptions contained in the licence. The legal code for the licence is available at [Creative Commons](#).

OEH asserts the right to be attributed as author of the original material in the following manner: © State of New South Wales and Office of Environment and Heritage 2018.

### **Acknowledgments**

The NSW National Parks and Wildlife Service (NPWS) acknowledges that:

- Far South Coast Escarpment Parks are in the traditional Country of the Yuin and Walbanga peoples
- Kosciuszko National Park is in the traditional Country of the Monaro, Ngarigo, Wiradjuri, Wolgalu and Ngunnawal peoples
- Mummel Gulf National Park and State Conservation Area are in the traditional Country of the Biripai, Anaiwan and Thungutti/Dunghutti peoples.

These plan of management amendments were prepared by staff of NSW National Parks and Wildlife Service (NPWS), part of OEH.

For additional information about the plans of management, these amendments or the parks, contact: NPWS Narooma Office (Far South Coast Escarpment Parks), cnr Graham and Burrawang Streets Narooma, 02 4476 2888; NPWS Jindabyne Office (Kosciuszko National Park) at Kosciuszko Road Jindabyne, 02 6450 5555; NPWS Tumut Office (Kosciuszko National Park), The Old Butter Factory 7a Adelong Rd Tumut, 02 6947 7000; or NPWS Walcha Office (Mummel Gulf National Park), 188W North Street Walcha, 02 6777 4700.

Published by:

Office of Environment and Heritage  
59 Goulburn Street, Sydney NSW 2000  
PO Box A290, Sydney South NSW 1232  
Phone: +61 2 9995 5000 (switchboard)  
Phone: 1300 361 967 (OEH and national parks enquiries)  
TTY users: phone 133 677, then ask for 1300 361 967  
Speak and listen users: phone 1300 555 727, then ask for 1300 361 967  
Email: [info@environment.nsw.gov.au](mailto:info@environment.nsw.gov.au)  
Website: [www.environment.nsw.gov.au](http://www.environment.nsw.gov.au)

Report pollution and environmental incidents  
Environment Line: 131 555 (NSW only) or [info@environment.nsw.gov.au](mailto:info@environment.nsw.gov.au)  
See also [www.environment.nsw.gov.au](http://www.environment.nsw.gov.au)

ISBN 978 1 925753 79 0




OEH 2018/0306  
June 2018

# Have your say

A plan of management for Far South Coast Escarpment Parks was adopted in 2011. Kosciuszko National Park Plan of Management was adopted in 2006. Mummel Gulf National Park and State Conservation Area Plan of Management was adopted in 2012. Section 73B of the *National Parks and Wildlife Act 1974* (NPW Act) provides that the Minister may amend a plan of management.

We want to know what you think about these draft plan amendments. Your knowledge may help us manage these parks more effectively.

To give us feedback on the draft plan amendments you can send a written submission by:

-  using the online submission form at <https://engage.environment.nsw.gov.au/consult>
-  emailing it to [npws.parkplanning@environment.nsw.gov.au](mailto:npws.parkplanning@environment.nsw.gov.au)
-  posting it to: Manager Planning Evaluation and Assessment, PO Box 95, Parramatta NSW 2124.

Written submissions must be received by **7 August 2018**.

To help us make the best use of your feedback:

- Make sure we can tell what issue or part of the plan amendment you are talking about. One way you can do this is to include the section heading and/or page number from the amendment in your submission.
- Tell us how we can make the proposed amendment better. You may want to tell us what you know about the park or how you or other people use and value it.
- We are happy to hear any ideas or comments you may have and will consider them all, but please be aware that we can't always include all information or ideas in the final revised plan.

## What happens to your feedback?

**Step 1:** Your submission is part of the process of making this draft plan amendment final. At the close of the public exhibition period we consider all submissions and prepare a submissions report. Note that multiple submissions received by the same author will be counted as a single submission.

**Step 2:** We provide the relevant Advisory Committee and the National Parks and Wildlife Advisory Council with the draft amendment, all of the submissions and the submissions report. They then consider the documents, make comments on the amendment or suggest changes, and provide advice to the Minister for the Environment.

**Step 3:** The Minister considers the amendment, the submissions and any advice, makes any necessary changes and decides whether to adopt the plan under the National Parks and Wildlife Act 1974.

## Your privacy

Your submission will be provided to a number of statutory advisory bodies as outlined above. Your comments on the draft amendments may include 'personal information'. OEHL complies with the NSW [Privacy and Personal Information Protection Act 1998](#), which regulates the collection, storage, quality, use and disclosure of [personal information](#). For details see [OEHL and your privacy](#). Information that in some way identifies you may be gathered when you use our website or send us an email.

Should an access application under the *Government Information (Public Access) Act 2009* be received that requests access to your submission, your views about release will be sought if you have indicated that you object to it being made public.

## Why amend the plans?

In 2012 the NSW Government committed to establishing five pilots across New South Wales to trial horse riding in wilderness locations, as provided for in the NPWS [Strategic Directions for Horse Riding in NSW National Parks and Reserves](#). Further information on the pilots can be found on the OEH [Wilderness horse riding trial](#) webpage.

The horse riding in wilderness trials commenced in April 2014 in wilderness areas within Kosciuszko National Park, Mummel Gulf National Park, Deua National Park and Monga National Park. The plans of management relevant to each of these parks were amended in February 2014 to enable the trials to proceed on identified pilot routes for a period of up to two years.

Monitoring was undertaken during the two-year pilot and the outcomes have been published and are available on the OEH [Wilderness horse riding trial](#) webpage. Analysis of data from the monitoring program indicates relatively low usage by horse riders, minimal environmental impacts and low risk of impact to park and wilderness values.

After considering those outcomes and continuing stakeholder interest, it is now proposed to amend the three plans of management to enable horse riding to continue in the designated wilderness locations. Horse riding in other wilderness areas will not be allowed.

## How to read the amendments

The amendments propose changing sections of text in the three plans of management. The proposed amendments should be read in conjunction with the adopted plans, as well as the February 2014 amendments to the three plans that relate to the wilderness horse riding pilot.

Plans of management are available on the Office of Environment and Heritage website at: [www.environment.nsw.gov.au/topics/parks-reserves-and-protected-areas/park-management/plans-of-management](http://www.environment.nsw.gov.au/topics/parks-reserves-and-protected-areas/park-management/plans-of-management). This page provides links to plans of management for [Mummel Gulf National Park and State Conservation Area](#) and for the [Far South Coast Escarpment Parks](#) as amended in February 2014.

There are also links to the [Kosciuszko National Park Plan of Management](#) as adopted in 2006, and to each of the amendments to this plan, including the [2014 amendments to allow a pilot of horse riding in wilderness](#).

References in this document to numbering relate to the numbering used in the online versions of the adopted plans and/or the amendments of February 2014.

# Proposed amendment to Far South Coast Escarpment Parks National Park Plan of Management

The plan of management for the Far South Coast Parks was amended in February 2014 to enable a trial of horse riding in wilderness at three locations in the Deua National Park and Monga National Park. The current proposed amendment makes changes to the plan of management to provide for continuation of horse riding at these specific locations.

Below are the proposed amendments to the plan:

## **Under 5.6 Horse riding**

### **1. Background**

Delete the second paragraph:

‘For bridle tracks outside wilderness areas, Park Rangers have undertaken periodic assessment of the environmental impact of horses on tracks. Over a two-year period, at current levels of use, the level of impact has been low with no indication of any increase.’

Replace with:

‘Recreational horse riding was trialled in three wilderness locations between April 2014 and April 2016, being the Shoebridge Bridle Track in Deua National Park and Monga National Park and the WD Tarlinton Bridle Track and Georges Pack Bridle Track in Deua National Park (see Figure 2). Monitoring during the trial identified low use of the tracks by horse riders, minimal impact from this use and that wilderness values were not compromised.’

### **2. Issues/Opportunities**

Delete the second dot point:

‘Two wilderness pilots will be undertaken to trial horse riding access in wilderness. The first pilot will comprise the Shoebridge Track in northern Deua National Park (as identified in Figure 2) and the second pilot will comprise the WD Tarlinton and Georges Pack Tracks in southern and eastern Deua National Park (as identified in Figure 2). The pilots will be undertaken for a period of up to 2 years in accordance with a monitoring framework applied to the pilots.’

and replace with:

‘Recreational horse riding is only permitted in wilderness areas on the Shoebridge Bridle Track in Deua National Park and Monga National Park and the WD Tarlinton Bridle Track and Georges Pack Bridle Track in Deua National Park (see Figure 2).’

Delete the third dot point:

‘Horse riding is and will continue to be prohibited on all other bridle tracks, management trails and other areas in wilderness. The only exception to this is where access to bridle tracks is required to undertake approved management works.’

and replace with:

‘Horse riding is prohibited on all other bridle tracks, management trails and other areas in wilderness. The only exception is where access to bridle tracks is required to undertake approved management works.’

Insert fourth dot point:

‘Some bridle tracks in wilderness areas are remote, rough, steep and unmarked and are only suitable for very experienced users with specialised skills, including navigation and emergency first-aid. Parts of the bridle tracks cross other land tenure including private property.’

### **3. Desired outcome**

Delete the desired outcome:

‘Opportunities for visitors to travel through the Parks on horseback on the recreational road network, management trails and bridle tracks outside wilderness areas.’

and replace with:

‘Opportunities for horse riders to access the recreational road network, management trails and bridle tracks outside wilderness areas, and specific tracks in wilderness areas.’

### **4. Guidelines and Actions**

5.6.1 Delete current text:

‘Allow horse riding on the recreational road network and on the management trails and bridle tracks outside wilderness areas. Based on an assessment of the significance and ecological impacts, determine which bridle tracks may be used for horse riding.’

and replace with:

‘Allow horse riding on the recreational road network and on management trails and bridle tracks outside wilderness areas.’

5.6.2 Delete current text:

‘Review where horse riding is allowed or the conditions under which horse riding can be undertaken within the Escarpment Parks should there be unacceptable environmental damage. Undertake such a review in consultation with interest groups.’

and replace with:

‘Continue to assess the environmental impact of horses on bridle tracks and other routes. Where there is unacceptable environmental damage, review where horse riding is allowed or the conditions under which horse riding can be undertaken. Undertake such a review in consultation with interest groups.’

Delete 5.6.4

‘Continue to undertake an annual assessment of the environmental impact of horses on bridle tracks outside wilderness areas (primarily the Shoebridge Track and Corn Trail).’

5.6.5 change action number to 5.6.4

5.6.6 Delete current text:

‘Two wilderness pilots will be undertaken to trial horse riding access in wilderness. The first pilot will comprise the Shoebridge Track in northern Deua National Park (as identified in Figure 2, page 72) and the second pilot will comprise the WD Tarlinton and Georges Pack Tracks in southern and eastern Deua National Park (as identified in Figure 2, page 72). The

pilots will be undertaken for a period of up to 2 years in accordance with a monitoring framework applied to the pilots, commencing on a date to be publicly notified. Groups of more than 20 horses (including pack horses) will not be permitted.'

and replace with:

'5.6.5 Allow horse riding in wilderness only on the Shoebridge Bridle Track in Deua National Park and Monga National Park and the WD Tarlinton Bridle Track and Georges Pack Bridle Track in Deua National Park (see Figure 2). Groups of more than 20 horses (including pack horses) will not be allowed.'

5.6.7 Delete current text:

'Allow camping with horses at Supers Memorial Camp (Wadbilliga National Park) and Bendethera (Deua National Park). Implement a permit system for these horse camps if considered necessary due to either volume of use or environmental impact. Otherwise, camping with horses is not permitted within wilderness areas as part of the wilderness trial.'

and replace with:

'5.6.6 Allow camping with horses at Supers Memorial Camp (Wadbilliga National Park) and Bendethera (Deua National Park). Implement a permit system for these horse camps if considered necessary due to either volume of use or environmental impact. Camping with horses is not allowed within wilderness areas.'

Insert additional action:

'5.6.7 Work collaboratively with recreational horse riding groups on trail monitoring, maintenance, and the development and promotion of codes of conduct that encourage responsible use.'

**5. Figure 2**

Replace with new map (see below) titled 'Figure 2. Horse riding in wilderness locations'.

**6. Table 5 – Actions Identified in this Plan**

Table 5 is to be updated to reflect the changes made above in item 4. 'Guidelines and Actions'.

Delete existing section 5.6 of Table 5 and replace with:

<b>5.6 HORSE RIDING</b>	
5.6.2	Continue to assess the environmental impact of horses on bridle tracks and other routes. Where there is unacceptable environmental damage, review where horse riding is allowed or the conditions under which horse riding can be undertaken. Undertake such a review in consultation with interest groups.
5.6.6	Allow camping with horses at Supers Memorial Camp (Wadbilliga National Park) and Bendethera (Deua National Park). Implement a permit system for these horse camps if considered necessary due to either volume of use or environmental impact. Camping with horses is not allowed within wilderness areas.
5.6.7	Work collaboratively with recreational horse riding groups on trail monitoring, maintenance, and the development and promotion of codes of conduct that encourage responsible use.

## 7. Table 6 – Guidelines Identified in the Plan

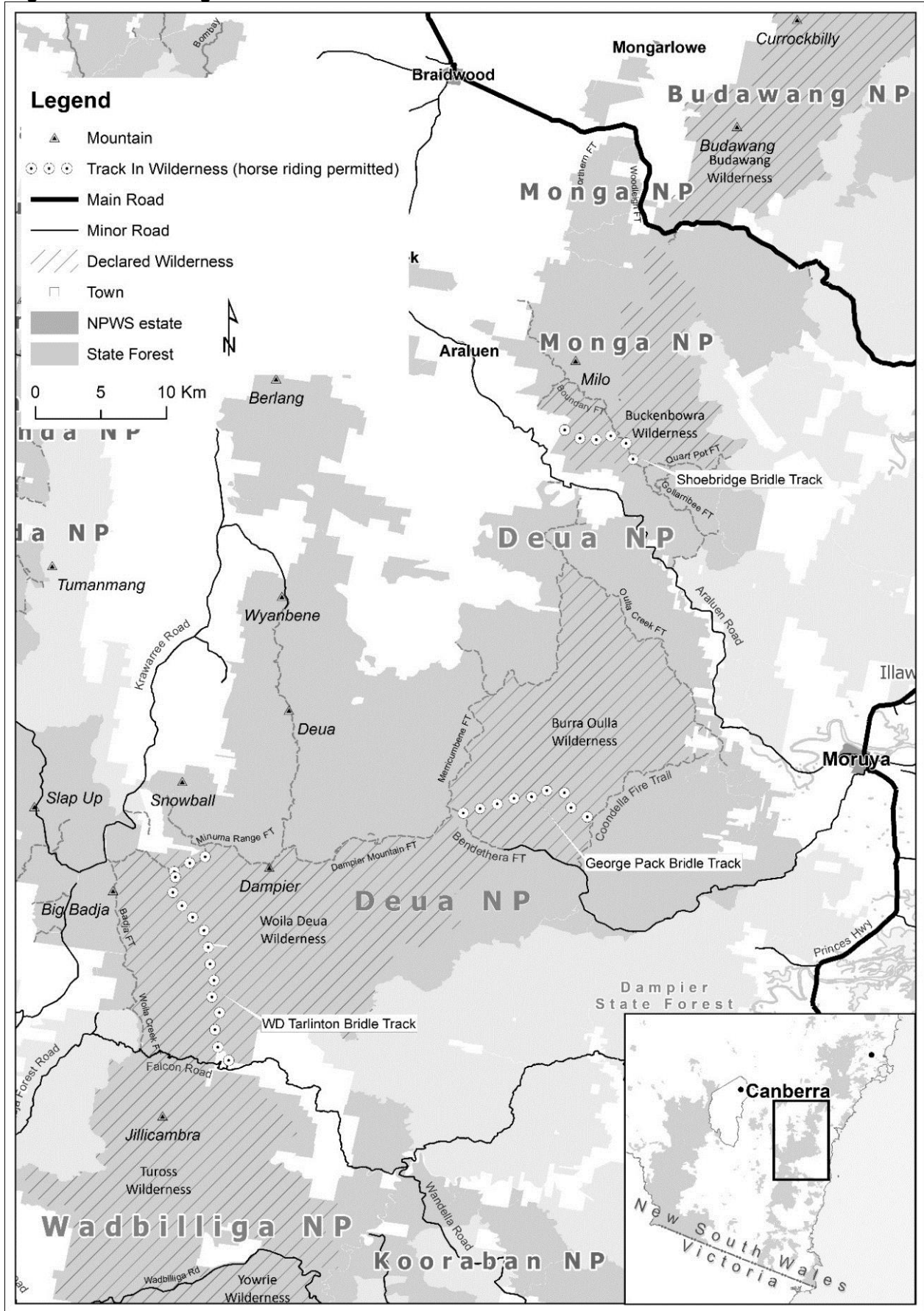
Table 6 is to be updated to reflect the changes made above in item 4. 'Guidelines and Actions'.

Delete existing section 5.6 of Table 6 and replace with:

5.6 HORSE RIDING	
5.6.1	Allow horse riding on the recreational road network and on management trails and bridle tracks outside wilderness areas.
5.6.2	Continue to assess the environmental impact of horses on bridle tracks and other routes. Where there is unacceptable environmental damage, review where horse riding is allowed or the conditions under which horse riding can be undertaken. Undertake such a review in consultation with interest groups.
5.6.3	Due to potential conflicts with walkers, prohibit horse riding on the designated walking tracks with the exception of Bendethera Caves portal for access to the Zig Zag Bridle Track and the Corn Trail.
5.6.4	Allow horse riding on the identified dual use trails: Mongarlowe-Corn Trail link, Corn Trail in Monga National Park and Bendethera Portal (as far as the Zig Zag Trail) in Deua National Park.
5.6.5	Allow horse riding in wilderness areas only on the Shoebridge Bridle Track in Deua National Park and Monga National Park and the WD Tarlinton Bridle Track and Georges Pack Bridle Track in Deua National Park (see Figure 2). Groups of more than 20 horses (including pack horses) will not be allowed.
5.6.6	Allow camping with horses at Supers Memorial Camp (Wadbilliga National Park) and Bendethera (Deua National Park). Implement a permit system for these horse camps if considered necessary due to either volume of use or environmental impact. Camping with horses is not allowed within wilderness areas.



Figure 2. Horse riding in wilderness locations



# Proposed amendment to Kosciuszko National Park Plan of Management

The plan of management for the Kosciuszko National Park was amended in February 2014 to enable a trial of horse riding in wilderness along an identified route. The current proposed amendment makes changes to the plan of management to provide for continuation of horse riding at this location.

The proposals here refer to the text and numbering of the 2006 plan as amended in 2014.

## **1. Section 5.3 Back Country Zone**

This amendment proposes deleting the last two sentences of the third paragraph:

‘Horse riding is permitted in parts of the Back Country Zone, as well as some Wilderness areas as part of the horse riding in wilderness pilot described in 8.7.1(2). Commercial activities as part of the horse riding in wilderness pilot described in 8.7.1(2) are also permitted.’

And replacing with:

‘Horse riding is permitted in parts of the Back Country Zone, as well as some Wilderness areas as described in 8.7.1(2). Commercial activities related to horse riding in those areas are also permitted.’

## **2. Section 8.7 Horse Riding – Background**

Section 8.7 describes where horse riding is permitted in the park.

This amendment proposes deleting the third paragraph and replacing it with:

‘Horse riding is prohibited on the Main Range and certain other alpine and subalpine areas within the park. Recreational horse riding is prohibited in declared wilderness areas (the Wilderness Zone) except in those locations described in 8.7.1(2). Except for the Thredbo alpine resort area where horse riding is currently permitted under lease conditions, the focus of horse riding in the park is within the Back Country Zone.’

## **3. Section 8.7.1 Horse Riding – Policies and Actions**

The amendment of February 2014 inserted a new action numbered 8.7.1(2).

This amendment proposes deleting 8.7.1(2) and replacing it with:

‘Allow recreational horse riding in the Wilderness Zone in the locations that were part of the 2014-2016 horse riding in wilderness trial, as follows:

- Only permit horse riding on the trails identified in Map 8, those being Nine Mile Trail (from Barry Way to the Ingeegoodbee Trail) and Ingeegoodbee Trail (from the Victorian border to the Tin Mines Hut at the southern end of the Cascades Trail)
- Each horse riding group, either commercial or non-commercial, will have a maximum of eight horses only

- Camping with horses is not allowed within 500 metres of huts or further than 100 metres from the existing management tracks.'

#### **4. Map 8**

Replace map 8 with a new map (see below) titled 'Map 8. Horse riding in wilderness locations'

#### **5. Schedule 4. Appropriate recreational activities**

##### **Table S4.1 Non-commercial activities**

Change horse riding row in the Wilderness zone column to:

'Yes (only on trails described in 8.7.1(2))'

##### **Table S4.2 – Commercial or large group (>20 people) activities**

Change horse riding row in the Wilderness zone column to:

'Group or commercial activities with consent (only on trails described in 8.7.1(2))'

Amend note 12 to:

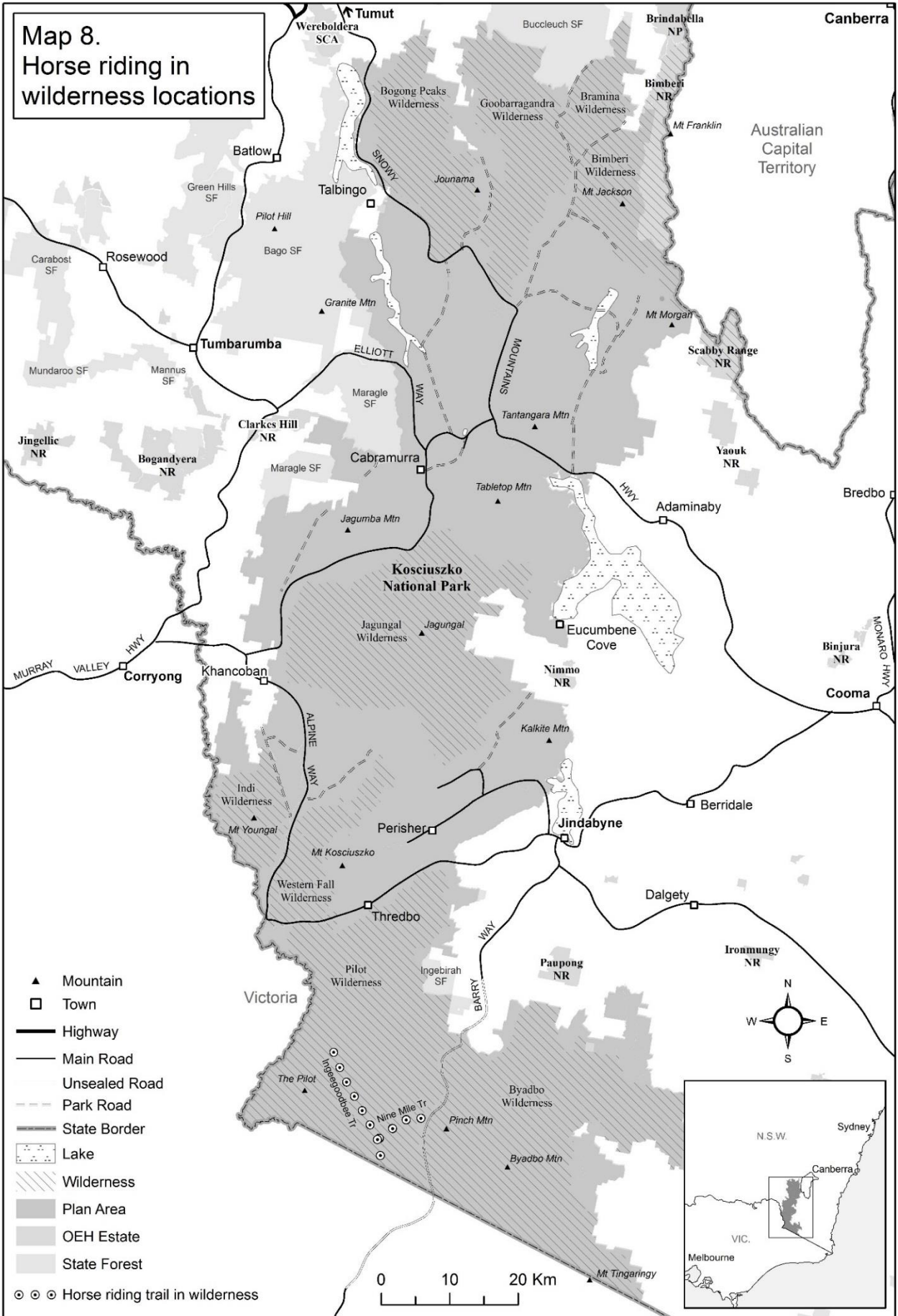
'No commercial activities are permitted in the Wilderness Zone, except horse riding with consent on trails described in 8.7.1(2)'

#### **Schedule 6. Standard of Visitor Facilities**

##### **Table S6.3 – Vehicular road and trail classification**

Amend third dot point under Notes to:

'Management trails in the Wilderness Zone are for management, emergency and other authorised vehicles only but may be available to the public for walking and in some instances cycling and horse riding as described in 8.7.1(2).'



# Proposed amendment to Mummel Gulf National Park and State Conservation Area Plan of Management

The plan of management for the Mummel Gulf National Park State Conservation Area was amended in February 2014 to enable a trial of horse riding in wilderness in Mummel Gulf National Park. The current proposed amendment makes changes to the plan of management to provide for continuation of horse riding at these locations.

The proposals here refer to the text and numbering of the 2012 plan as amended in 2014.

## **1. 3.6 Recreation, Education and Research**

Delete the fifth paragraph:

'Horse riding will also be trialled on a route through wilderness within the planning area, for the purpose of a wilderness pilot. The wilderness pilot will be undertaken on Dicks Hut Fire Trail and River Road (as shown on Map 1). The pilot will be undertaken for a period of up to two years in accordance with a monitoring framework applied to the pilot, commencing on date to be publicly notified.'

and replace with:

'Between April 2014 and April 2016, a horse riding in wilderness trial was undertaken on Dicks Hut Fire Trail and River Road (see Map 1). Horse riding is only allowed on these specific routes in the wilderness area.'

## **2. Table 4: Permissible recreation activities, their location and conditions of use**

In the row 'Horse riding', delete the second paragraph in the second column ('Location/s where the activity is permissible'):

'On the Dicks Hut Fire Trail and River Road route as part of the wilderness pilot, described in 3.6.'

and replace with:

'On the Dicks Hut Fire Trail and River Road.'

## **3. Table 5: Vehicle Access within the Planning Area**

In the row 'Dicks Hut Fire Trail', delete the last sentence in the last column ('Comments'):

'Horse riding will be permitted on this trail as part of the wilderness pilot, as described in 3.6.'

and replace with:

'Horse riding is allowed on this trail.'

In the row 'River Rd', delete the last sentence in the last column ('Comments'):

'Horse riding will be permitted on this trail as part of the wilderness pilot, as described in 3.6.'

and replace with:

'Horse riding is permitted on this trail.'

#### **4. Implementation Table 9.3 - Visitor Use and Services**

Delete 9.3.6:

'Allow horse riding on the BNT, Panhandle Fire Trail and those parts of the Porters Camp Road, Mummel Fire Trail and Daisy Patch Road that are within the planning area only. Allow overnight camping at New Country Swamp only. All horses and other pack animals will be required to be yarded, fed and watered away from designated camp sites. Horse riding will also be trialled on a route through wilderness within the planning area, for the purposes of a wilderness pilot. The wilderness pilot will be undertaken on Dicks Hut Fire Trail and River Road. The pilot will be undertaken for a period of up to two years in accordance with a monitoring framework applied to the pilot, commencing on a date to be publicly notified.'

And replace with:

'Allow horse riding on the BNT, Panhandle Fire Trail and those parts of the Porters Camp Road, Mummel Fire Trail and Daisy Patch Road that are within the planning area. Horse riding in wilderness areas is allowed on Dicks Hut Fire Trail and River Road. Groups of more than 20 horses (including pack horses) will not be permitted on wilderness area routes. Allow overnight camping with horses at New Country Swamp only. Horses and other pack animals are not permitted in the campground and must be yarded, fed and watered in the yards provided.'

Delete 9.3.7:

'Undertake monitoring of visitor use levels and impacts, including at New Country Swamp and on roads and trails. Implement actions if necessary to control impacts such as provide a small yard for BNT animals near or adjacent to the existing New Country Swamp camping area.'

And replace with:

'Undertake monitoring of visitor use levels and impacts, including at New Country Swamp and on roads and trails. Implement actions if necessary to control impacts.'

# Map 1. Map of Mummel Gulf National Park and State Conservation Area

(Note: provided here for reference only, no changes are proposed to this map)

