

# Queanbeyan Nature Reserve

## Fire Management Plan & Operations Map

Scale 1:7000 Version 2003 - A

### Fire Behaviour and Vegetation Management Guidelines

Broad Vegetation Type	Fire Behaviour Characteristics	Vegetation Management Guidelines
<b>Grassy woodland.</b> A Blakely's red gum-Yellow box community with native and exotic grassy understorey and very sparse shrub distribution.	Even spread in short grassy understorey and low fine fuel loads. Intense short distance spotting and rapid rate of spread possible in extreme conditions. Low risk of crown fires due to minimal shrubby understorey, spacing between trees and low bark fuels. 80% curing of native grasses toward the end of January. 80% curing of exotic grasses during March/April.	An interval between high intensity fire events less than 10 years should be avoided. Two annual consecutive low intensity fires should be avoided. Wildfire should be excluded or suppressed. Low intensity controlled patch burning may be permitted in autumn in response to the need for the maintenance of natural grassy ecosystems.
<b>Natural temperate grassland.</b> Open treeless grassland containing native and exotic grasses and scattered woody weeds.	Even spread in short grassy layer and low fine fuel loads. Intense short distance spotting and rapid rate of spread possible in extreme conditions. 80% curing of native grasses toward the end of January. 80% curing of exotic grasses during March/April.	An interval between high intensity fire events less than 10 years should be avoided. Two annual consecutive low intensity fires should be avoided. Wildfire should be excluded or suppressed. Low intensity controlled patch burning may be permitted in winter in response to the need for the maintenance of natural grassy ecosystems.

### Fire Season Information

The critical fire season occurs between November and March.

During the fire season fires may exhibit high intensity fire behaviour under windy conditions, especially when droughts or periods of prolonged dryness occur that result in dry fuels and low soil moisture.

During the fire season prevailing winds during the day are from the north and northwest. In the evenings and nights winds are often from the east.

### Contacts

National Parks and Wildlife Service Incident Response Answering Service (a/h): 1800 629 104  
 Queanbeyan Area Office (b/h): 6299 2929  
 Queanbeyan Area Workshop (40 Baydon Rd, Queanbeyan) (b/h): 6297 8601

NSW Rural Fire Service Yarrowluma/Queanbeyan Fire Control Centre, Ellerton Dr, Queanbeyan: 6297 1840

NSW Fire Brigade 41 Campbell St, Queanbeyan: 6297 2332

NSW Police Queanbeyan: 6298 0599

NSW Ambulance Shropshire St, Queanbeyan: 13 1233

Queanbeyan City Council: 6298 0211

ACT Emergency Services Bureau Emergency/Communications Centre: 6207 8333

Queanbeyan Racing Club McCrae St, Queanbeyan: 6299 2398

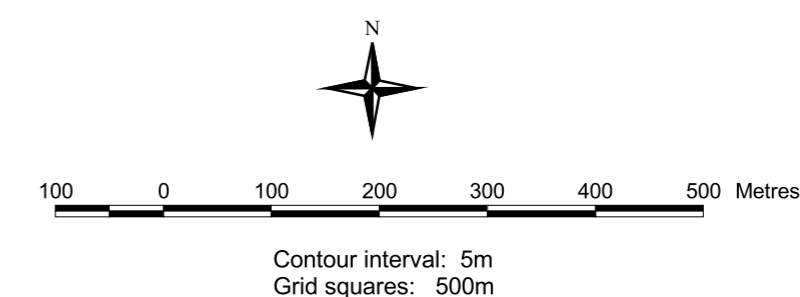
State Rail Authority: 6939 5469

### Fire Management Operational Guidelines

Command and control	First fire agency on-site may assume control of the fire, but ensure that the NPWS is contacted. The initial Incident Controller will consult with other agencies on the on-ground arrangements and requirements for an Incident Management Team.
Suppression strategies	Wildfire is to be excluded from, or suppressed in the reserve. A broad containment strategy should be considered using existing roads and trails in and surrounding the reserve, including Woods Lane in the ACT.  In severe weather fallback should be east and north of the reserve to protect life and property. Backburning should be used to protect the reserve from fire.  In severe weather conditions backburning may be initiated in the reserve to burnout the area between the containment line (likely to be located east and north) and fire front (likely to be moving from the west and northwest) with consideration taken not to burn the entire reserve. A copy of the Queanbeyan Nature Reserve Fire Operations Map should be distributed to the Fireground Manager and IMT.
Earthmoving machinery	Earthmoving machinery is not permitted. No ploughed breaks or other earthworks are permitted in the reserve. Mowing and slashing are permitted.
Fire fighting chemicals	The use of foam, wetting agents and retardants is not permitted in the reserve.
Fire fighting vehicles and other vehicles	North part: Firefighting vehicles are not permitted. South part: Fire fighting vehicles permitted throughout, with preference given to vehicles keeping to existing trails or the reserve perimeter wherever possible.
Water supply	Set up supply from outside urban sources in conjunction with the NSW Fire Brigade and RFS.
Communications	NPWS mid band VHF channel 6 or 8. CDMA mobile. RFS PMR and UHF channel advised at incident.
Fire fighter safety	Safe areas during severe weather conditions are along trails and roads east of the reserve.

**Warning: Threatened plants and animals have been recorded throughout Queanbeyan Nature Reserve.**

	Locked gate
	Vehicle track
	Railway line
	Drainage
	Queanbeyan Nature Reserve



Fire Management Plan prepared by Lynette Finch  
 South West Slopes Region  
 NSW National Parks and Wildlife Service  
 April 2003

Any edits or corrections should be forwarded to:  
 NSW NPWS  
 PO Box 1189  
 Queanbeyan NSW 2620

Copyright NSW National Parks and Wildlife Service April 2003  
 This map is not guaranteed to be free from error or omission  
 The NSW National Parks and Wildlife Service and its employees  
 disclaim liability for any act done on the information in the map  
 and any consequences of such acts or omissions